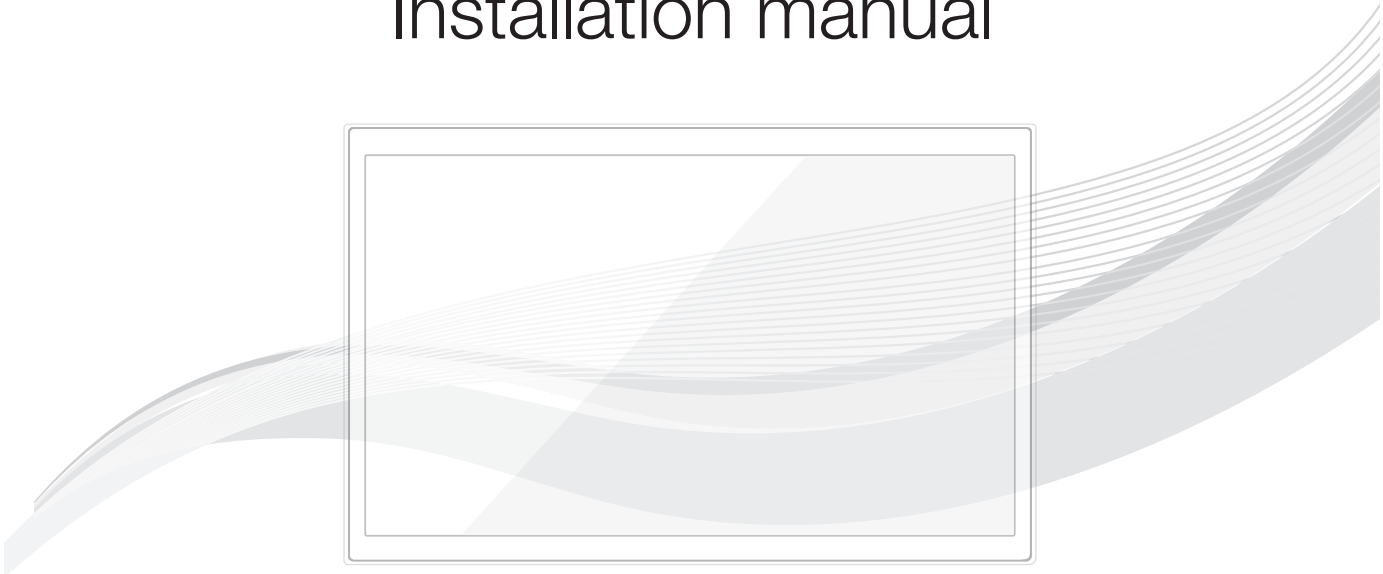




LED TV

Installation manual



imagine the possibilities

Thank you for purchasing this Samsung product.
To receive more complete service, please
register your product at

www.samsung.com/register

Model _____ Serial No. _____

Figures and illustrations in this User Manual are provided for reference only and may differ from actual product appearance. Product design and specifications may be changed without notice.

Instruction

This TV is provided with interactive functionality through a set-back box (SBB/STB) connected to the TV, and with other TVs in a computer-controlled system for hotels and other hospitality businesses.

Interactive: When the TV is powered-up initially, it sends a command to identify the SBB/STB; if identified, the TV switches to ONLINE mode and full control is through the SBB/STB.

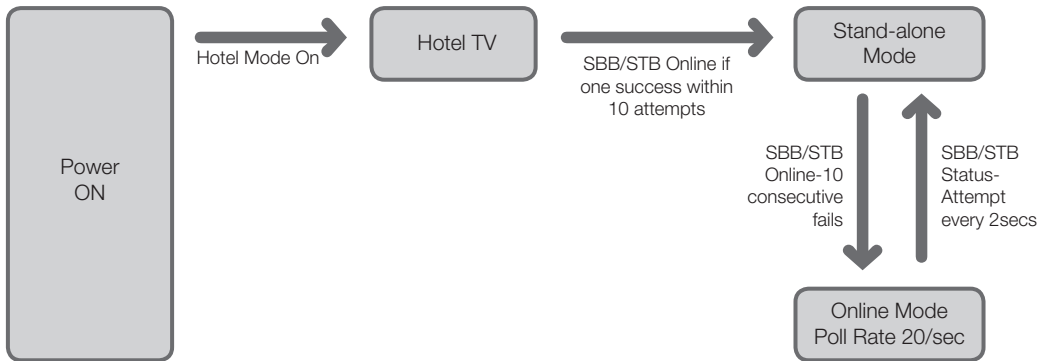
If the TV is in ONLINE mode, it stops receiving IR(Samsung remote) commands and acts according to interface protocol.

Stand-Alone: If SBB/STB is not identified, the TV should be switched to STAND-ALONE mode with restricted operation.

Operational Modes

When this TV (in Hotel mode) is operated with a SBB/STB, it is in one of two states :

- ONLINE or STAND-ALONE. In the STAND-ALONE state, the TV will act as a Hotel TV, but without active communication. This is to prevent guests from trying to cheat the system by disconnecting the SBB/STB.



To set the details for Stand-alone or interactive mode, refer to pages 19-22(Setting the hotel option data : Stand-alone mode and Interactive mode)

- Some operations may be restricted to prevent guests from "cheating" the TV system.
- No main menu(Interactive mode) or Channel Menu, Plug & Play in Main Menu (Stand-Alone mode)
- Limited Volume and Panel key lock or unlock

Still image warning

Avoid displaying still images (like jpeg picture files) or still image element (like TV Program logo, panorama or 4:3 image format, stock or news bar at screen bottom etc.) on the screen. Constant displaying of still picture can cause uneven wear of screen phosphor, which will affect image quality. To reduce risk of this effect, please follow below recommendations:

- Avoid displaying the same TV channel for long periods.
- Always try to display any image on full screen, use TV set picture format menu for best possible match.
- Reduce brightness and contrast values to minimum required to achieve desired picture quality, exceeded values may speed up the burnout process.
- Frequently use all TV features designed to reduce image retention and screen burnout. Refer to the relevant user manual section for details.

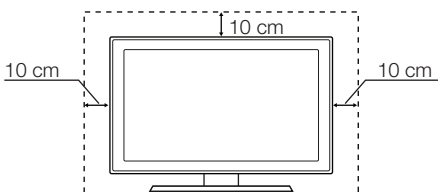
Securing the Installation Space

Keep required distances between the product and other objects (e.g. walls) to ensure proper ventilation.

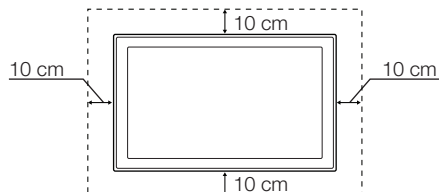
Failing to do so may result in fire or a problem with the product due to an increase in the internal temperature.

- When using a stand or wall-mount, use parts provided by Samsung Electronics only.
 - Using parts provided by another manufacturer may result in a problem with the product or injuries due to the product falling.
- The appearance may differ, depending on the product.

Installation with a stand.



Installation with a wall-mount.



Contents

- Instruction 2
- Operational Modes 2
- Still image warning 2
- Securing the Installation Space..... 2
- Accessories..... 4
- Installing the LED TV Stand 5
- Assembling the swivel (32 inch TVs or larger) 7
- Viewing the Connection Panel 9
- TV Controller 13
- Viewing the Remote Control 14
- Connecting the TV with SBB 15
- Connecting the Bathroom Speakers..... 17
- Connecting the MediaHub HD..... 19
- Connecting the RJP (Remote Jack Pack) 20
- Connecting to a COMMON INTERFACE slot (Your TV viewing Card Slot) 22
- Setting the Hotel Option Data..... 23
- SIRCH..... 61
- Installing the Wall Mount..... 78
- Securing the TV to the Wall 79
- Anti-theft Kensington Lock 79
- Specifications..... 80
- Dimensions 81

Accessories

- 📎 Please make sure the following items are included with your LED TV. If any items are missing, contact your dealer.
- 📎 The items' colour and shapes may vary depending on the model.

- | | |
|--|--|
| <ul style="list-style-type: none"> • Remote Control & Batteries (AAA x 2) • Quick Set up Guide • CI Card Adapter • Hotel Mount Kit | <ul style="list-style-type: none"> • Power Cord / Data Cable • Safety Guide (Not available in all locations) • Cable Holder |
|--|--|

- 📎 The stand and stand screw may not be included, depending on the model.
- 📎 The Data Cable may not be included, depending on the SI Vendor.



Correct Disposal of This Product (Waste Electrical & Electronic Equipment)

(Applicable in the European Union and other European countries with separate collection systems)

This marking on the product, accessories or literature indicates that the product and its electronic accessories (e.g. charger, headset, USB cable) should not be disposed of with other household waste at the end of their working life. To prevent possible harm to the environment or human health from uncontrolled waste disposal, please separate these items from other types of waste and recycle them responsibly to promote the sustainable reuse of material resources. Household users should contact either the retailer where they purchased this product, or their local government office, for details of where and how they can take these items for environmentally safe recycling. Business users should contact their supplier and check the terms and conditions of the purchase contract. This product and its electronic accessories should not be mixed with other commercial wastes for disposal.



Correct disposal of batteries in this product

(Applicable in the European Union and other European countries with separate battery return systems.)

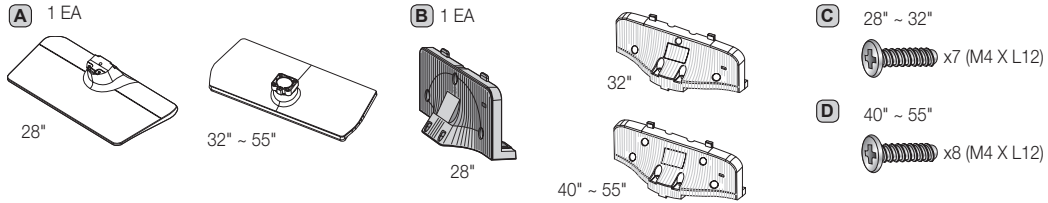
This marking on the battery, manual or packaging indicates that the batteries in this product should not be disposed of with other household waste at the end of their working life. Where marked, the chemical symbols Hg, Cd or Pb indicate that the battery contains mercury, cadmium or lead above the reference levels in EC Directive 2006/66. If batteries are not properly disposed of, these substances can cause harm to human health or the environment. To protect natural resources and to promote material reuse, please separate batteries from other types of waste and recycle them through your local, free battery return system.

Installing the LED TV Stand

The 32" and larger LED TVs have swivel stands. You can set these stands so that the TVs swivel 20 degrees left and right or 90 degrees left and right.

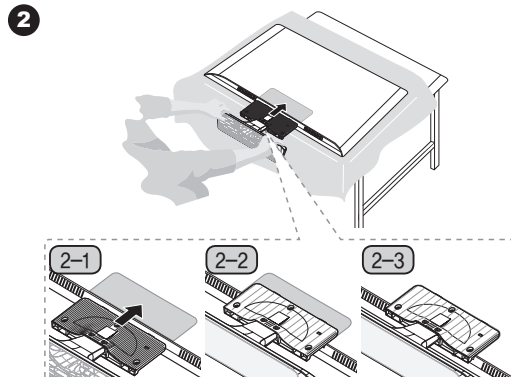
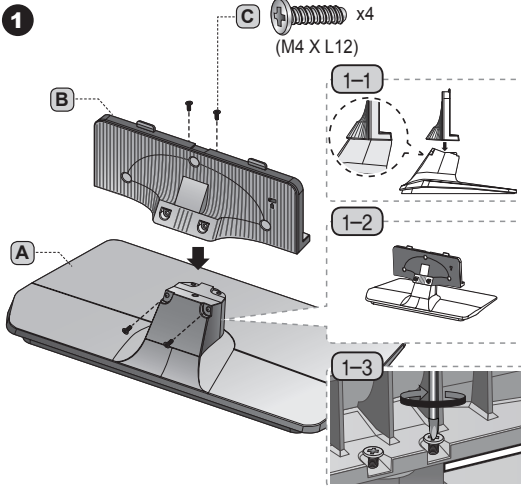
Stand Components

When installing the stand, use the provided components and parts.

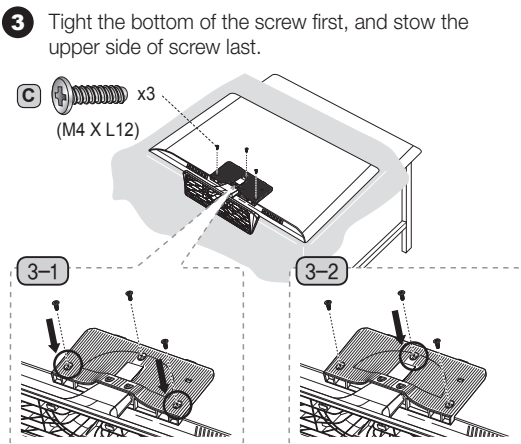


- Stand
- Guide Stand
- Screws

HG28EC690

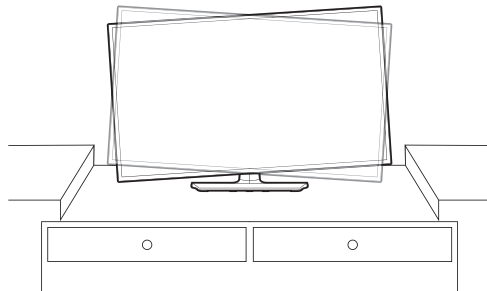


- Place a soft cloth over the table to protect the TV, and then place the TV on the cloth screen-side down.
- Insert the Stand Guide into the slot on the bottom of the TV.
- Slide and assemble it to the end line in the direction of arrow.



- Progress the assembly of screw in the manual's order.

- 4** When the declination happened, try reassemble it **2** category.
- Make sure to assembling stand guide attached on the TV.



HG32EC690 / HG40EC690 / HG48EC690 / HG55EC690

1

2

Place a soft cloth over the table to protect the TV, and then place the TV on the cloth screen-side down.

Insert the Stand Guide into the slot on the bottom of the TV.

Slide and assemble it to the end line in the direction of arrow.

3 Tight the bottom of the screw first, and stow the upper side of screw last.

Progress the assembly of screw in the manual's order.

4 When the declination happened, try reassemble it **2** category.

Make sure to assembling stand guide attached on the TV.

NOTE

- Make sure to distinguish between the front and back of each component when assembling them.
- Make sure that at least two persons lift and move the TV.

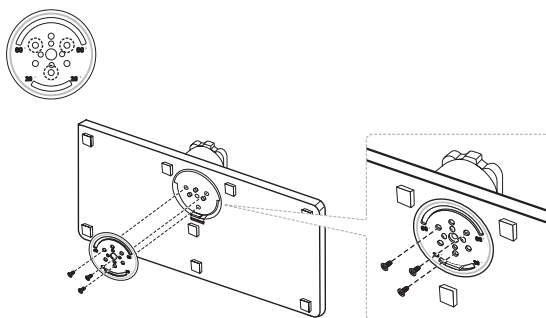
Assembling the swivel (32 inch TVs or larger)

▲ WARNING: If you configure the TV to swivel, you must attach it securely to the floor, a desk, a dresser top, etc. as described in the installation instructions.

The 32" and larger LED TVs have swivel stands. You can configure these stands so that the TVs swivel 20 degrees left and right, 60 degrees left and right, or 90 degrees left and right using the BRACKET HOLDER SWIVEL.

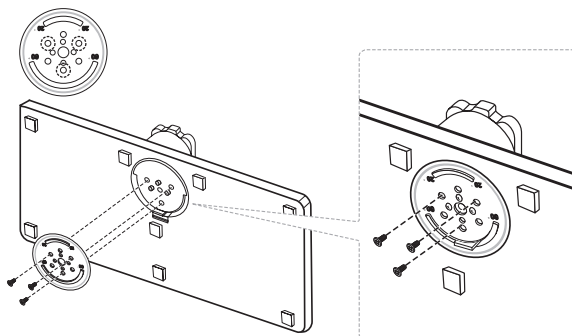
20° swivel

To configure the TV so that it swivels 20° left and right, insert the prong on the bottom of the stand through the curved hole in the Bracket Holder Swivel marked 20°. Then, fix the Bracket Holder Swivel to the stand using the three supplied screws as shown below.



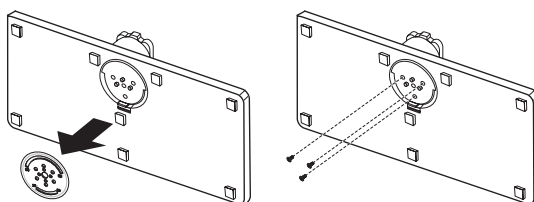
60° swivel

To configure the TV so that it swivels 60° left and right, insert the prong on the bottom of the stand through the curved hole in the Bracket Holder Swivel marked 60°. Then, fix the Bracket Holder Swivel to the stand using the three supplied screws as shown below.

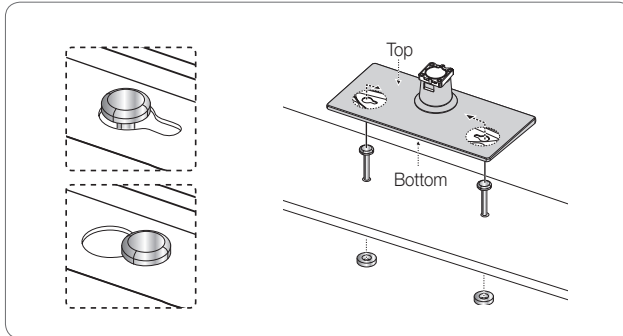


90° swivel

To configure the TV so that it swivels 90° left and right, remove the Bracket Holder Swivel, and then screw the three supplied screws into the stand as shown below.



Hotel Mount Kit



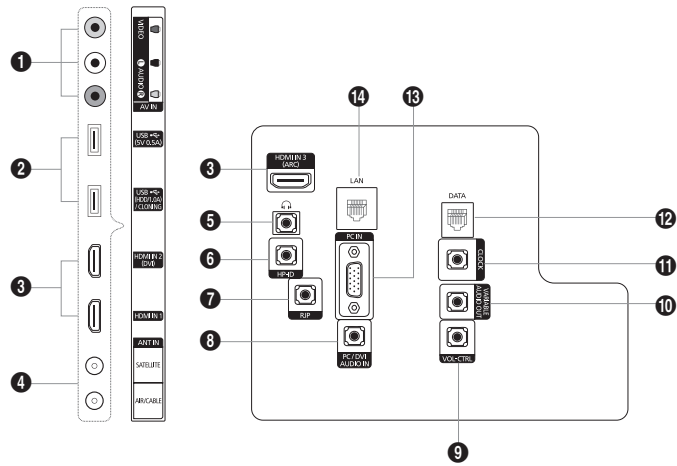
Affix the stand to a flat surface such as a dresser top, desk top, or entertainment center as shown.



WARNING: To prevent injury, you must attach this TV securely to the floor, a table, a dresser top, etc. with the Hotel Mount Kit as described in these instructions.

Viewing the Connection Panel

HG28EC690**

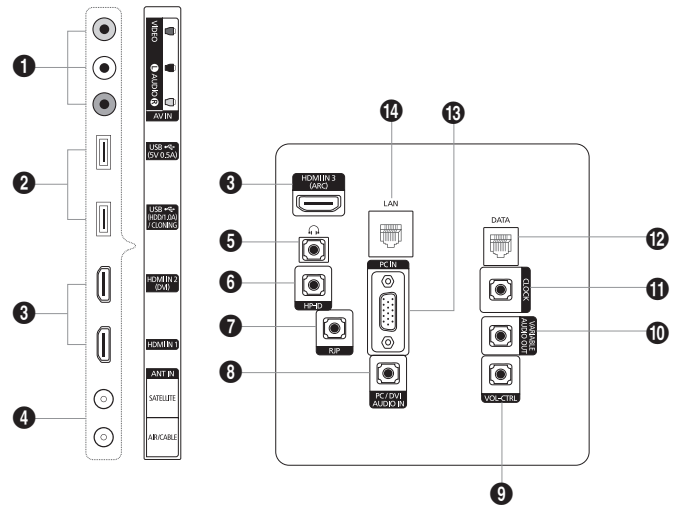


HG32EC690**

HG40EC690**

HG48EC690**

HG55EC690**



- Whenever you connect an external device to your TV, make sure that power on the unit is turned off.
- When connecting an external device, match the colour of the connection terminal to the cable.

1 AV IN

- Connect audio cables to "R-AUDIO-L" on your TV and the other ends to corresponding audio out jacks on an A/V device.
- Connects Component video / audio.
- Connect RCA audio cables (optional) to "R - AUDIO - L" on the rear of the TV set and the other ends to corresponding audio out jacks on the external device.
- When connecting to AV IN, the color of the AV IN [Y/VIDEO] jack (Green) does not match the color of the video cable (Yellow).

2 USB (5V 0.5A) / CLONING

USB (HDD/1.0A) / CLONING

- Connector for software upgrades and Media Play, etc.
- Service connection.

3 HDMI IN 1, 2(DVI), 3(ARC): Connects to the HDMI jack of a device with an HDMI output.

- 🔗 No sound connection is needed for an HDMI-HDMI connection. HDMI connections carry both audio and video.
- 🔗 Use the **HDMI IN 2(DVI)** jack for a DVI connection to an external device. Use a DVI to HDMI cable or DVI-HDMI adapter (DVI to HDMI) for the video connection and the **PC/DVI AUDIO IN** jacks for audio.

4 ANT IN (SATELLITE), (AIR/CABLE)

- To view television channels correctly, the TV must receive a signal from one of the following sources:
- An outdoor antenna / A cable television system

5 HEADPHONE JACK: Headphones may be connected to the headphone jack on your TV. While the headphones are connected, the sound from the built-in speakers is disabled.

6 HP-ID: Connect the cable to HP-ID and Headphone Jack simultaneously and connect it to separated Headphone Box. See page 18. When connecting Headphone to Headphone Box, it works same as Headphone function.

Display Modes

You can also select one of the standard resolutions listed in the Resolution column. The TV will automatically adjust to the resolution you choose.

After connecting a computer to the TV, set the screen resolution for the TV on the computer. The optimal resolution is 1920 x 1080 @ 60 Hz. If it is set to any other than in the table below, the TV may display nothing. Set the resolution properly, referring to the user guide of the computer or its graphic card.

The resolutions in the table are recommended.

🔗 Optimal resolution is 1366 X 768 @ 60 Hz.

Mode	Resolution	Horizontal Frequency (KHz)	Vertical Frequency (Hz)	Pixel Clock Frequency (MHz)	Sync Polarity (H / V)
IBM	640 x 350	31.469	70.086	25.175	+/-
	720 x 400	31.469	70.087	28.322	-/+
MAC	640 x 480	35.000	66.667	30.240	-/-
	832 x 624	49.726	74.551	57.284	-/-
VESA CVT	720 x 576	35.910	59.950	32.750	-/+
	1280 x 720	56.456	74.777	95.750	-/+
VESA DMT	640 x 480	31.469	59.940	25.175	-/-
	640 x 480	37.500	75.000	31.500	-/-
	640 x 480	37.861	72.809	31.500	-/-
	800 x 600	37.879	60.317	40.000	+/+
	800 x 600	46.875	75.000	49.500	+/+
	800 x 600	48.077	72.188	50.000	+/+
	1024 x 768	48.363	60.004	65.000	-/-
	1024 x 768	56.476	70.069	75.000	-/-
	1024 x 768	60.023	75.029	78.750	+/+
	1280 x 720	45.000	60.000	74.250	+/+
1366 x 768	47.712	60.015	85.500	+/+	
VESA GTF	1280 x 720	52.500	70.000	89.040	-/+

✎ Optimal resolution is 1920 X 1080 @ 60 Hz.

Mode	Resolution	Horizontal Frequency (KHz)	Vertical Frequency (Hz)	Pixel Clock Frequency (MHz)	Sync Polarity (H / V)
IBM	720 x 400	31.469	70.087	28.322	-/+
MAC	640 x 480	35.000	66.667	30.240	-/-
	832 x 624	49.726	74.551	57.284	-/-
	1152 x 870	68.681	75.062	100.000	-/-
VESA DMT	640 x 480	31.469	59.940	25.175	-/-
	640 x 480	37.861	72.809	31.500	-/-
	640 x 480	37.500	75.000	31.500	-/-
	800 x 600	37.879	60.317	40.000	+/+
	800 x 600	48.077	72.188	50.000	+/+
	800 x 600	46.875	75.000	49.500	+/+
	1024 x 768	48.363	60.004	65.000	-/-
	1024 x 768	56.476	70.069	75.000	-/-
	1024 x 768	60.023	75.029	78.750	+/+
	1152 x 864	67.500	75.000	108.000	+/+
	1280 x 1024	63.981	60.020	108.000	+/+
	1280 x 1024	79.976	75.025	135.000	+/+
	1280 x 720	45.000	60.000	74.250	+/+
	1280 x 800	49.702	59.810	83.500	-/+
	1280 x 960	60.000	60.000	108.000	+/+
	1366 x 768	47.712	60.015	85.500	+/+
	1440 x 900	55.935	59.887	106.500	-/+
1600 x 900RB	60.000	60.000	108.000	+/+	
1680 x 1050	65.290	59.954	146.250	-/+	
1920 x 1080	67.500	60.000	148.500	+/+	

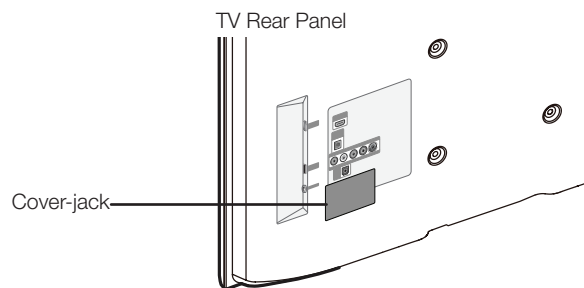
- ✎ When using an HDMI/DVI cable connection, you must use the **HDMI IN 1 (DVI)** jack.
- ✎ The interlace mode is not supported.
- ✎ The set might operate abnormally if a non-standard video format is selected.
- ✎ Separate and Composite modes are supported. SOG is not supported.

- 7 **RJP:** This port is an RJP (Remote Jack Pack) communication port that enables connecting different devices to additional modules to improve device use and convenience.
- 8 **PC/ DVI AUDIO IN:** Connects to the audio input jacks on an Amplifier/Home Theater.
- 9 **VOL-CTRL:** Used to control the volume of the Bathroom speaker. Connect the Bathroom Wall Box and the VOLCTRL port.
- 10 **VARIABLE AUDIO OUT:** Used for the audio output to the Bathroom speaker. Connect the Bathroom Wall Box and the Variable port (RCA).
- 11 **CLOCK:** Set the time after connecting the cable of the External Clock to Clock jack. You can use the External Clock Display function.
- 12 **DATA**
 - Used to support data communication between the TV and the SBB.
 - Connects using RJ-12 TV type plugs.
- 13 **PC IN:** Connect to the video output jack on your computer.
- 14 **LAN:** Connect to a wired LAN using CAT 5 cable.

Caution of the cover-jack

⚠ CAUTION

The cover-jack is for use by qualified service personnel only.
 To reduce the risk of electric shock or fire hazard, do not use the cover jack, unless you are qualified to do so.

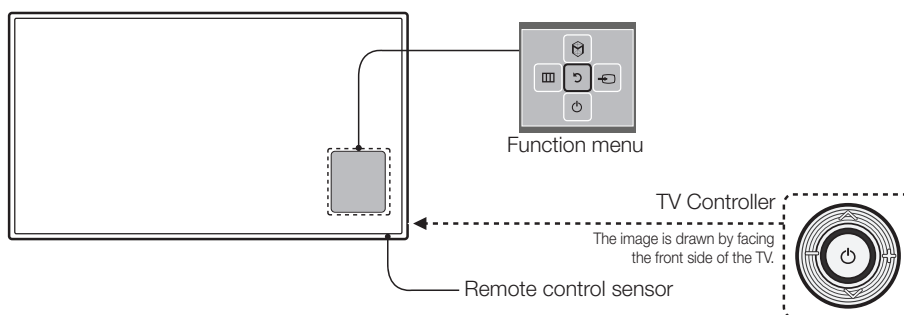


 The rear panel may differ depending on the model.

TV Controller

TV Controller is a multi directional button that helps navigate without using the remote control.

- ✎ Some functions which require a PIN code may not be available.
- ✎ The product colour and shape may vary, depending on the model.
- ✎ Exits the menu when pressing the controller for more than 1 second.
- ✎ When selecting the function by moving the controller to the up/down/left/right directions, do not press the controller. If the controller is used first, you cannot operate it to move the up/down/left/right directions.



Power on	Turn the TV on by pressing the controller in standby mode.
Adjusting the volume	Adjust the volume by moving the controller from side to side when the power is on.
Selecting a channel	Select a channel by moving the controller up and down when the power is on.
Using the function menu	Press the controller when the power is on and the function menu appears. If you press it again, the function menu screen disappears.
Using the Menu	Selects the MENU (☰) by moving the controller in the function menu screen. The OSD(On Screen Display) of your TV's feature appears.
Selecting the Source	Selects the Source (☒) by moving the controller in the function menu screen. The Source list screen appears.
Selecting the SMART HUB (📺)	With the Function menu visible, select SMART HUB (📺) by moving the Controller upwards. The SMART HUB main screen appears. Select an application by moving the Controller, and then pressing the Controller.
Power Off	Selects the Power Off (⏻) to turn the TV off by moving the controller in the function menu screen.

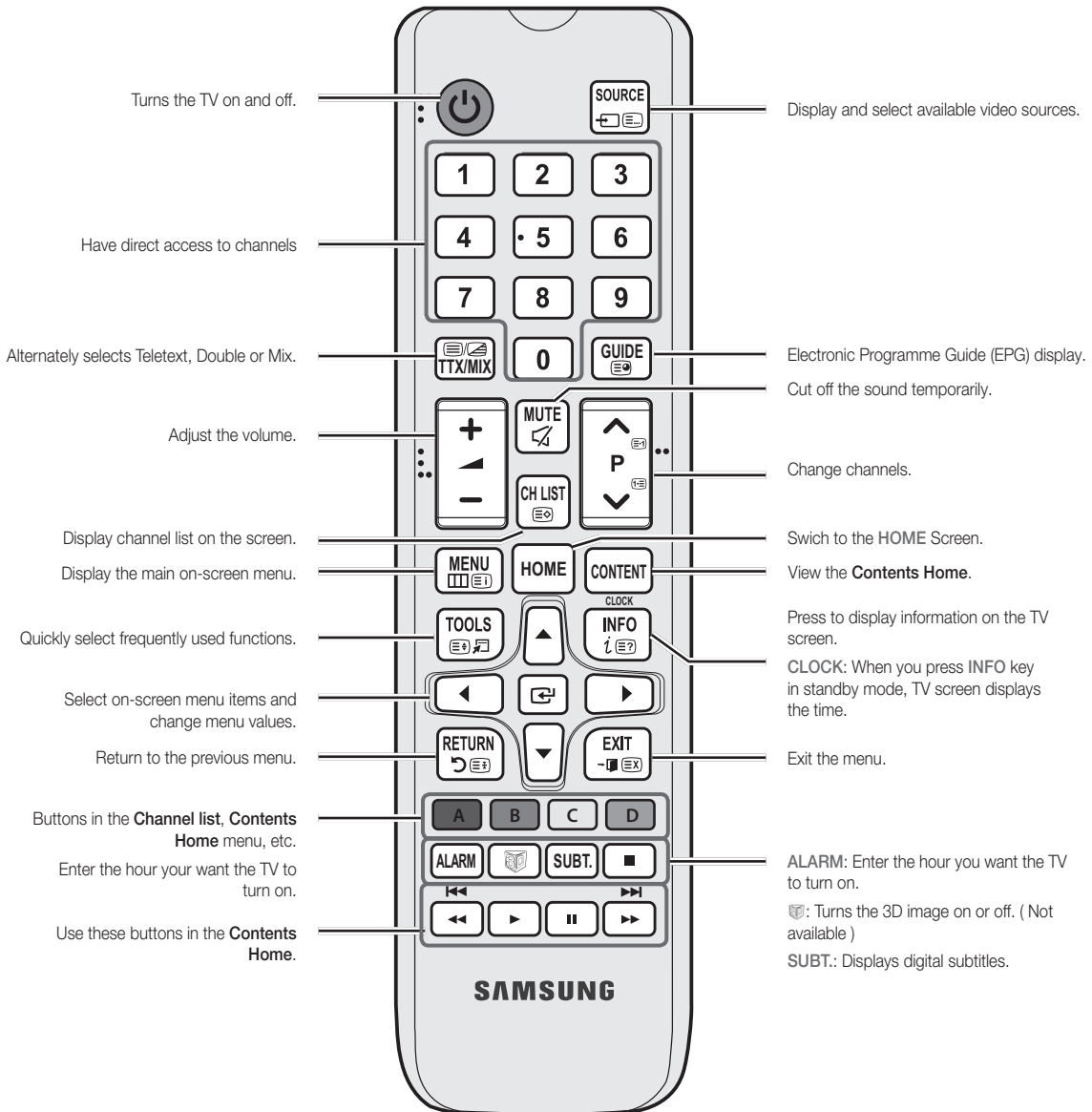
- ✎ To close the Menu, **SMART HUB**, or Source, press the Controller for more than 1 second.

Standby mode

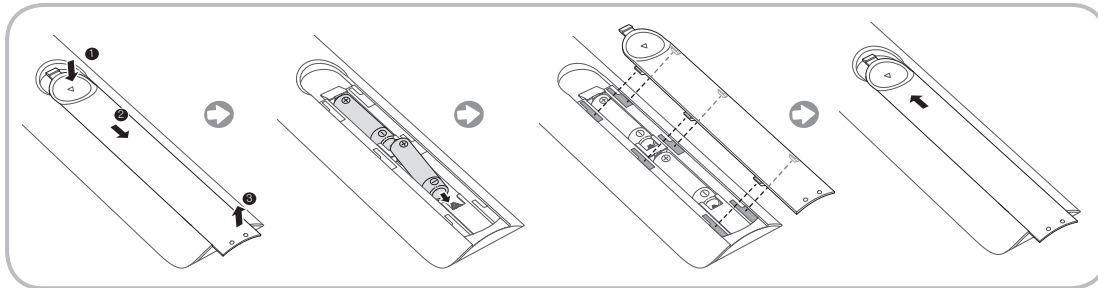
Do not leave your TV in standby mode for long periods of time a small amount of electric power is still consumed even when the power button is such as when on holiday. off. It is best to unplug the power cord.

Viewing the Remote Control

- This remote control has Braille points on the **Power**, **Channel**, and Volume buttons and can be used by visually impaired persons.



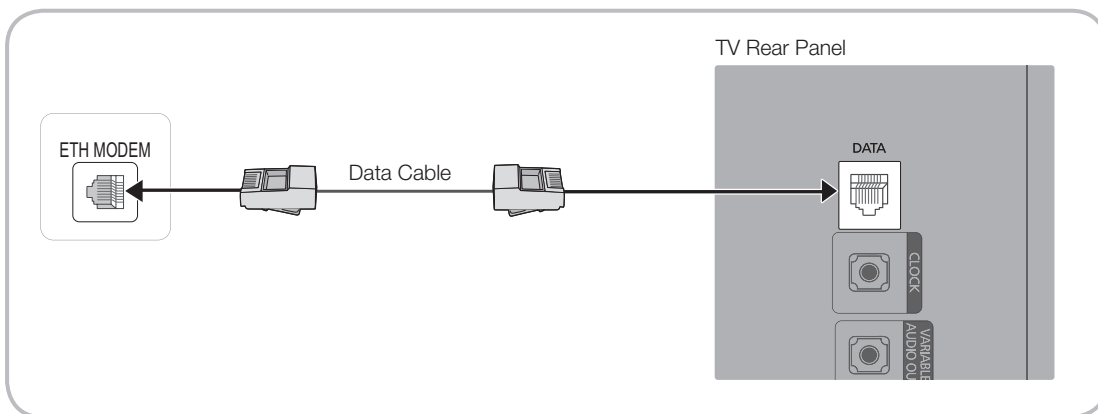
Installing batteries (Battery size: AAA)



NOTE

- Use the remote control within 23 feet of the TV.
- Bright light may affect the performance of the remote control. Avoid using nearby special fluorescent light or neon signs.
- The colour and shape may vary depending on the model.
- Remote control button 'HOME' & '3D' are not supported. When pressing these buttons, the TV unit does not respond.

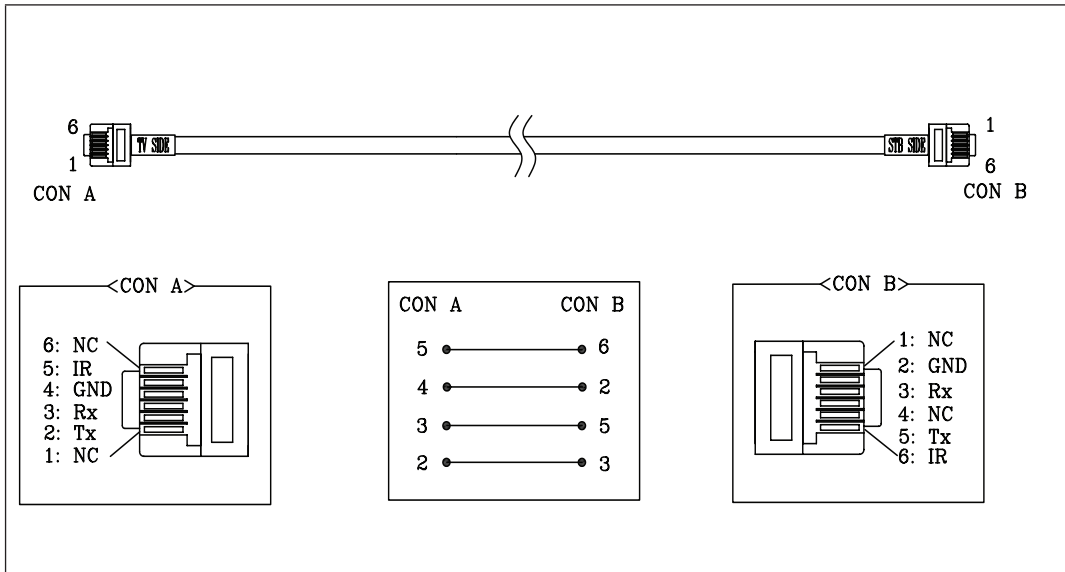
Connecting the TV with SBB



1. Connect the **DATA** jack of the TV to the [ETH MODEM] jack of the STB (SBB) with the Data cable.
🔧 Use data communication.

List of Vendors and Compatible Data Cables Supplied with the TV

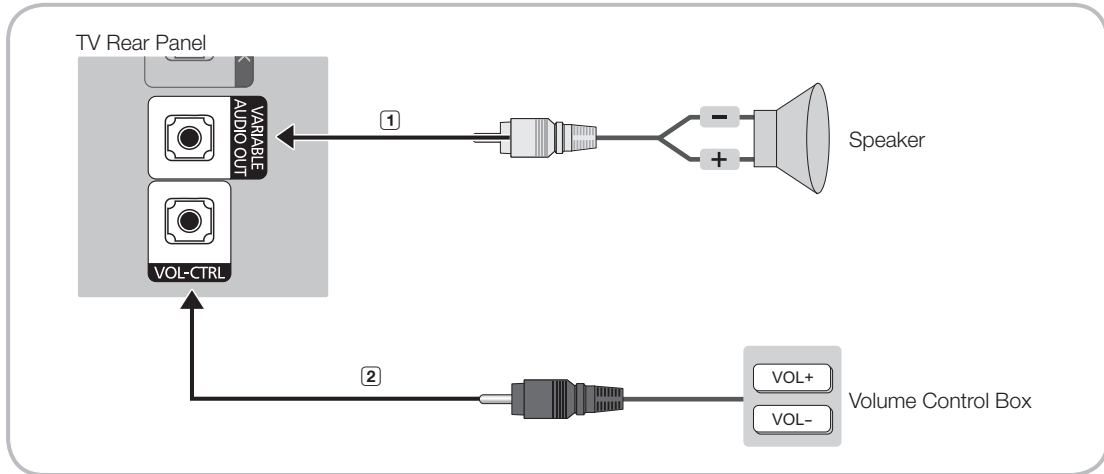
- Confirm that you are using the correct data cable for your vendor. Refer to the code label on the data cables.



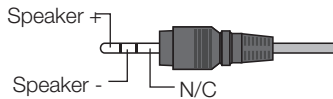
Connecting the Bathroom Speakers

You can connect the Bathroom Speakers using the following method.

Connecting through the Variable Output (available without an external amplifier)



1. Connect the **VARIABLE AUDIO OUT** port of the TV to the Bathroom Wall Speakers of the hotel.



2. Connect the **VOL-CTRL** jack of the TV to the Volume Control Box Switch port on the Bathroom Wall of the hotel.

✎ The maximum speaker output is 4W, 8Ω.

✎ The **VARIABLE AUDIO OUT** port supports **MONO** sound out only.

- Installing the Volume Control

- If you configure the Volume Control Box as shown in the figure, you can control the volume of the bathroom speakers.

- The jack that connects the Volume Control Box to the TV is a 3.5mm normal Phone jack.

- Volume Control Box switch is a Tact switch.

- ✎ Setting the Sub AMP Mode

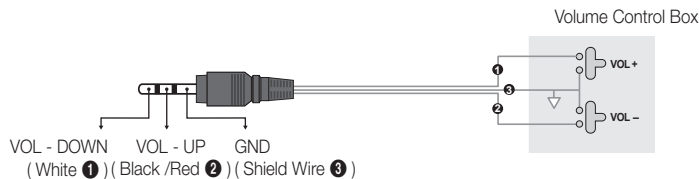
- **0**: Turns the Sub AMP function off (PWM off).

- **1**: Determines the Sub volume according to the main volume control. the sub volume is determined according to the Power On Volume, the Min Volume, and the Max Volume values of Hotel Mode.

- **2**: Determines the volume according to the bathroom control panel setting.

- Variable Output Port Specifications

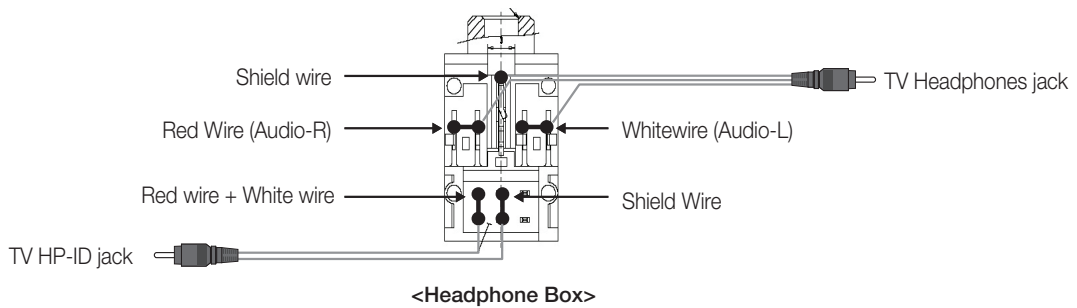
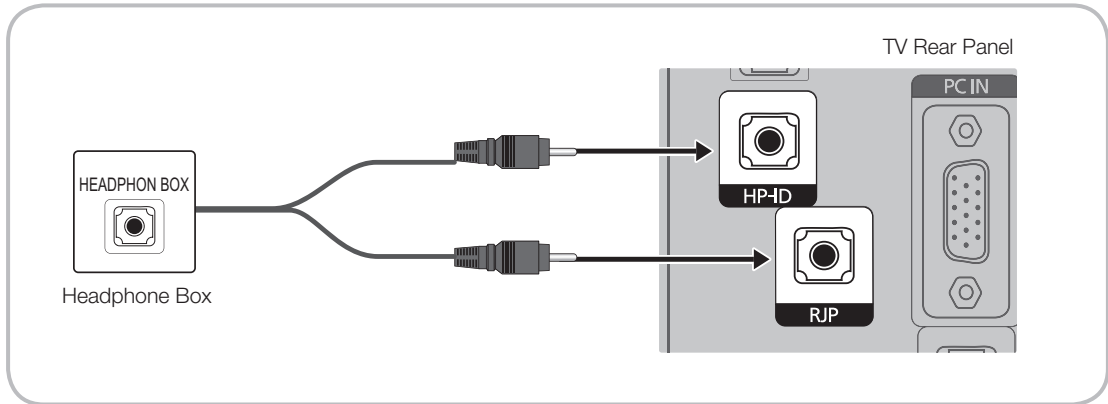
- **Speaker Wire**: Use speaker cable no more than 82 feet (25m) in length.



Audio Loop In

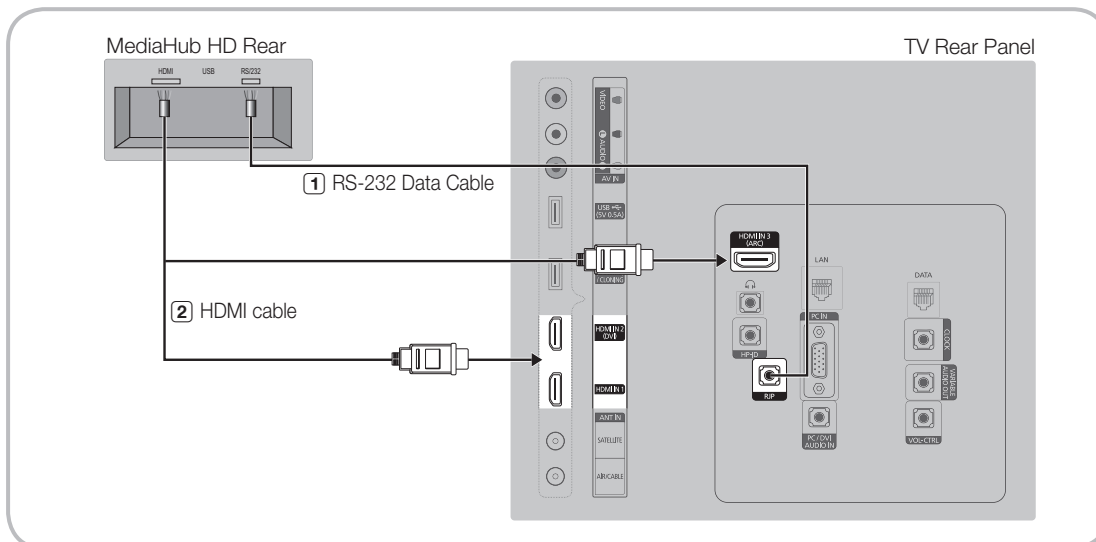
An additional Headphone Box can be installed on a bed or business desk for added convenience. The installation procedures are given below.

- Detailed Drawing of the Headphone Box.



Connecting the MediaHub HD

Output to any external source connected to MediaHub HD on the hotel desk.



1. Connect the **RJP** port of the TV and the **RS/232** port of the MediaHub HD.
2. Connect the **HDMI IN 1, 2(DVI) or 3 (ARC)** port of the TV and the **HDMI** port of the MediaHub HD.

- **MediaHub HD**

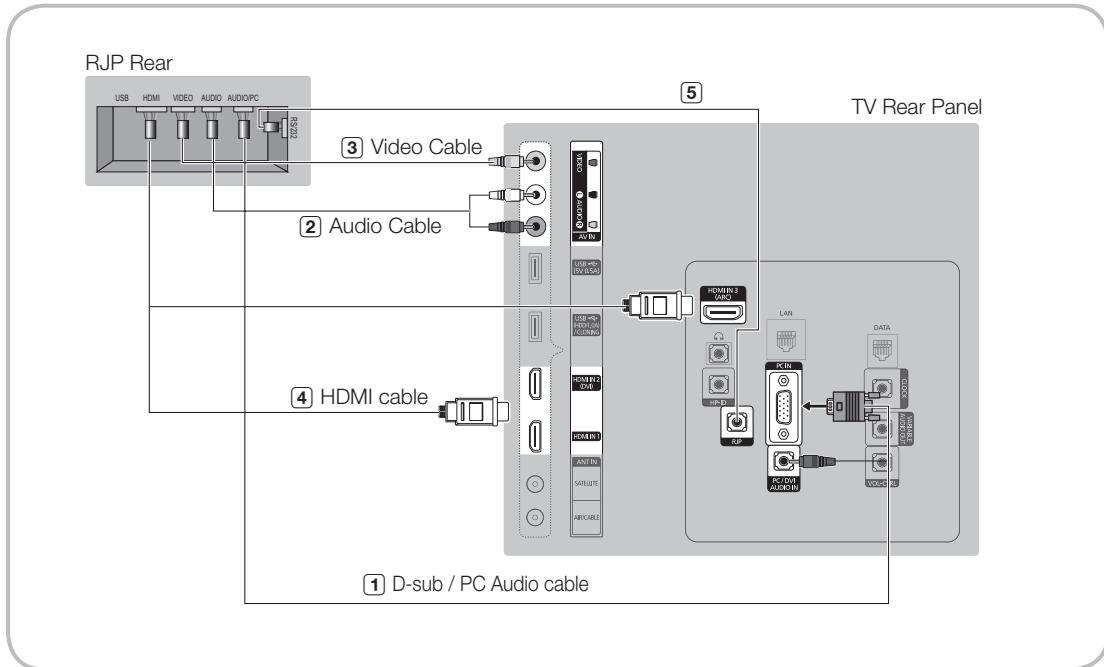
- The MediaHub HD is a hardware module that has different Audio Video inputs (A/V, Audio, PC, HDMI and USB) and corresponding outputs. The corresponding output sources connect from MediaHub to the TV. MediaHub communicates with the TV via RS232. Hot Plug & Play is a function that allows hotel guests to connect an external source to the MediaHub. MediaHub communicates with the TV by sending messages regarding Active/Inactive sources. The TV switches to the Active external source.
- You have to connect the HDMI of the MediaHub to the **HDMI IN 2(DVI)** port of the TV.
- When the TV is on, connect the TV and the RJP within 10 seconds.

- **Special features**

- PIP
- Auto Detection

Connecting the RJP (Remote Jack Pack)

Output to any external source connected to RJP on the hotel desk.



1. Connect the **PC IN / PC/DVI AUDIO IN** port of the TV to the PC/AUDIO port of the RJP.
2. Connect the **AV IN [VIDEO]/[L-AUDIO-R]** port of the TV to the VIDEO port of the RJP.
3. Connect the **AV IN [VIDEO]** port of the TV to the VIDEO port of the RJP.
4. Connect the **HDMI IN (1(ARC), 2(DVI) or 3)** port of the TV and the HDMI port of the RJP.
5. Connect the **RJP** port of the TV and the RS/232 port of the RJP.
 - 🔧 The RJP (Remote Jack Pack) compatible with this Samsung TV is TeleAdapt TA-7610, TA-7650 (HD) and TA-7660 (HD Plus).

- **RJP (Remote Jack Pack):** RJP stands for Remote Jack Pack. The RJP is a hardware module that has different Audio Video inputs (A/V, Audio, PC and HDMI) and corresponding outputs. The corresponding output sources are connected from RJP to TV. The RJP communicates with the TV via RS232. Hot Plug & Play is a function that allows hotel guests to connect an external source to the RJP. The RJP communicates with the TV by sending messages regarding Active/Inactive sources. The TV will switch to the Active external source according to the priority set by the User.

- 🔧 You can select **HDMI IN 1, 2(DVI) or 3(ARC)** and **AV IN** for connecting **RJP**.
- 🔧 When the TV is on, connect the TV and the **RJP** within 10 seconds.

- The RJP can be returned to the factory default settings by pressing the AV and HDMI buttons simultaneously for 10 seconds. All LEDs blink 5 times to acknowledge that this has been finished.
- The RJP will automatically turn off any LEDs after 5 minutes to avoid unnecessary light pollution in the hotel room. The LEDs that were turned off will turn on again if the guest touches any of the buttons and the 5 minute timer will restart. If the guest then touches another source button, the TV will change to the selected source and the corresponding LED will be lit.
- After an RJP Reset or a TV Power OFF/ON, it takes approx. 10 seconds to establish communications between the TV and the RJP.
- The following table shows the approximate time in seconds to switch from the TV to the input source, based on the priority.

☞ Scenario 1: When no inputs are connected.

Source	To Connect
AV	2 Sec
PC	0.7 Sec
HDMI	3.9 Sec

☞ Scenario 2: When two or more inputs are connected and an Input source is disconnected and then reconnected.

Source	Disconnect	To Connect	Total
AV	4.5 Sec	2 Sec	6.5 Sec
PC	0.7 Sec	0.7 Sec	1.4 Sec
HDMI	3.9 Sec	3.9 Sec	7.8 Sec

☞ E.g. If the RJP has all its live sources AV, PC and HDMI connected, AV is viewed as the highest priority. If the RJP is in HDMI mode, and a guest removes and reconnects the AV, the minimum time required to switch to the AV is 6.5 seconds.

- To connect audio (Ipod or Mp3), Music mode should be ON and Jack Ident detect should be OFF.
- AV, PC and HDMI input sources are supported.

Connecting to a COMMON INTERFACE slot (Your TV viewing Card Slot)

✎ Scenario 1: When no inputs are connected.

Attaching the CI Card Adapter

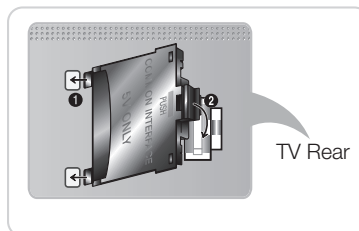
Attach the adapter as shown side.

✎ To install the CI CARD Adapter, please remove the sticker attached to the TV.

To connect the CI CARD Adapter, follow these steps.

✎ We recommend attaching the adapter before installing the wall mount, or inserting the “CI or CI+ CARD”.

1. Insert the CI CARD Adapter into the two holes on the product **1**.
 - ✎ Please find two holes on the rear of the TV, beside the **COMMON INTERFACE** port.
2. Connect the CI CARD Adapter into the **COMMON INTERFACE** port on the product **2**.
3. Insert the “CI or CI+ CARD”.



We recommend that you insert the CI card before you mount the TV on a wall. It may be difficult to insert after mounting. Insert the card after attaching the CI Card Adapter on TV. It is difficult to attach the module if you insert the card before attaching.

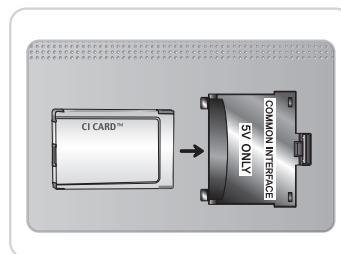
Using the “CI or CI+ CARD”

To watch paid channels, the “CI or CI+ CARD” must be inserted.

- If you don't insert the “CI or CI+ CARD”, some channels will display the message “Scrambled Signal”.
- The pairing information containing a telephone number, the “CI or CI+ CARD” ID the Host ID and other information will be displayed in about 2~3 minutes. If an error message is displayed, please contact your service provider.
- When the configuration of channel information has finished, the message “Updating Completed” is displayed, indicating the channel list is updated.

NOTE

- You must obtain a “CI or CI+ CARD” from a local cable service provider.
- When removing the “CI or CI+ CARD”, carefully pull it out with your hands since dropping the “CI or CI+ CARD” may cause damage to it.
- Insert the “CI or CI+ CARD” in the direction marked on the card.
- The location of the COMMON INTERFACE slot may be different depending on the model.
- “CI or CI+ CARD” is not supported in some countries and regions; check with your authorized dealer.
- If you have any problems, please contact a service provider.
- Insert the “CI or CI+ CARD” that supports the current aerial settings. The screen will be distorted or will not be seen.



Setting the Hotel Option Data

To Enter: Press the **MUTE** → 1 → 1 → 9 → **ENTER** buttons in order. (From the Hospitality mode, the Standalone mode is set.)

To Exit from this menu : power off and turn on again.

Depending on Model and Region, some menus do not exist on the TV set.

Hotel TV Function			Description
Category	Item	initial value	
Hospitality Mode	Hospitality Mode	Standalone	Select Hospitality mode. <ul style="list-style-type: none"> Interactive mode : TV works with an SI STB or SBB. Standalone mode : TV works alone, without an SI STB or SBB.
SI Vendor	SI Vendor	OFF	<ul style="list-style-type: none"> Interactive mode : Samsung / OCC / MTI / Nstreams / Enseco / Cardinal / Guestek / Seachange / MDC / Innvne Standalone mode : Smoovie
Power On	Power On Channel	Last Saved	Set the default values that will be applied when the TV is turned on. <ul style="list-style-type: none"> User Defined : Lets you set Power On Channel and Channel Type manually. See Power On Channel and Channel Type below. Last Saved : If you select this item, when the TV is turned on, it displays the channel it was displaying when it was turned off.
	Power On Channel Num	1	When the TV is turned on, it switches automatically to this channel.
	Power On Channel Type	ATV	Select channel band : AIR (analog air band), DTV (digital air band), CATV (analog cable band), CDTV (digital cable band)
	Power On Volume	Last Saved	<ul style="list-style-type: none"> User Defined : Lets you set the Power On Volume manually. See Power On Volume below. Last Saved : When the TV is turned on, it returns to the volume that had been set when the power had been turned off.
	Power On Volume Num	10	The TV turns on with this Volume Level in Stand Alone Hospitality mode.
	Min Volume	0	The minimum Volume Level the user can set in Stand Alone Hospitality mode.
	Max Volume	100	The maximum Volume Level the user can set in Stand Alone Hospitality mode.
	Power On Source	TV	Select the input source the TV displays when turns on.
	Power On Option	Last Option	Determines the TV's state when power returns after a power failure or after you have unplugged the TV and then plugged it in again. <ul style="list-style-type: none"> LAST Option : Returns to its last Power state. If it was in Stand-by, it returns to Stand-by. If it was on, it turns on. Power On : When the power returns, the TV turns on. Standby : When the power returns, the TV enters the Standby mode.
Channel	Channel Setup		Gives you direct, immediate access to some of the Channel menu functions on the user Channel menu such as Auto Program, Antenna selection, etc.
	Channel Editor		The Channel Editor lets you edit the channels stored in the TV's memory. Using Channel Editor you can: <ul style="list-style-type: none"> Change the channel numbers and names, and sort the channels in your desired channel number order. Apply the video mute to channels you select. The video mute blanks out the video from a channel and outputs only the sound while displaying a speaker icon on the screen. The Channel Editor also lets you view information about each channel easily, without your having to display each channel directly.
	Mixed Channel Map	ON	This Feature enables showing/browsing all antenna type (Air/Cable or Satellite) channels at the same time. <ul style="list-style-type: none"> On: When ON, guests can access the complete Channel Map irrespective of the selected antenna type. The Channel list will also populate Air as well Cable type channels. Off: When OFF, guest can access the Channel Map corresponding to the selected antenna type [AIR/CABLE or Satellite] only. The Channel list/ Editor will only show the selected antenna type channels.
	Dynamic SI	OFF	<ul style="list-style-type: none"> On : Check the DTV Programme channel number. (the DTV channel editor is inaccessible) Off: Do not check the DTV Programme channel number. (the DTV channel editor is accessible, but additional channel Programme number update is not supported)

Hotel TV Function			Description
Category	Item	initial value	
Channel	Channel Rescan Message	ON	When there is a mismatch between the data in the channel map and the transmitted data , the TV autotunes the channels to restore the data/parameters in the channel map. <ul style="list-style-type: none"> On: When Channel Rescan Message is ON, The OSD showing that the channels are being rescanned will be displayed to Hotel Guests. Off: A Hotel Admin can turn the Channel Rescan Message OFF, if the rescan message OSD should not to be displayed to Hotel Guests.
	Pan Euro MHEG	OFF	<ul style="list-style-type: none"> Off: If Pan EURO MHEG is set to Off, MHEG runs according to the existing product specifications. ON: If Pan EURO MHEG is set to On, MHEG is ON regardless of the product specifications or region.
	My Channel	OFF	Enable or disable the Mychannel feature.
	Genre Editor	...	Edit the genre for channels. (Available when Mychannel is On)
	Subtitle Auto On	OFF	<p>This function turns the function On/Off that automatically turns on the subtitles in a specific country.</p> <p>This function is supported for Hotel TVs that are ready to receive DVB broadcasts that is heading to Europe.</p> <p>This function is related to France's subtitle specification. The rest of the countries' subtitles function according to the appropriate country specifications regardless of the Subtitle Auto On function.</p> <ul style="list-style-type: none"> On: When the Subtitle Auto On function is ON, it follows France's subtitle specifications. Off: When the Subtitle Auto On function is OFF, it does not follow France's subtitle specifications.
Menu OSD	Picture Menu Lock	OFF	Enable or disable the Picture Menu.
	Menu Display	ON	<ul style="list-style-type: none"> On : The Main Menu is displayed. Off : The Main Menu is not displayed.
	Panel Button Lock	Unlock	Turning the front panel (local key) operations on/off. <ul style="list-style-type: none"> Unlock : Unlocks all panel keys. Lock : Locks all panel keys. OnlyPower : Locks all panel keys except the Power panel key. Menu/Source : Locks the Menu and Source panel keys.
	Home Menu Display	ON	OFF:The Home Menu is not displayed. ON:The Home Menu is displayed.
	Home Menu Editor		Edit Home Menu .
	Home Menu Auto Start	ON	ON:The Home Menu is Auto Start. OFF:The Home Menu is not Auto Start.
Clock	Clock Type	OFF	Off : No clock option of Factory menu shall work. Only Main menu. SW Clock:SW clock shall work only.
	Local Time	Manual	Selection of the way to update clock data <ul style="list-style-type: none"> Manual: Use clock data from DVB channel or manual clock setting When the TV is in the stand-alone mode. Time Channel: Use clock data from the selected Channel type and Channel num.
Music Mode	Music Mode AV	OFF	To get music output from an mp3/audio player through an AV Input Source. When on, you can hear sound from the player through the TV even without a Video signal. The TV's backlight, however, remains on. And add a video signal,it works normally.
	Music Mode PC	OFF	To get music output from an mp3/audio player through a PC Input Source. When on, you can hear sound from the player through the TV even there is no video signal. The TV's backlight, however, remains on.And add a video signal,it works normally.
	Music Mode Backlight	OFF	Backlight On/Off option in Music mode to save energy

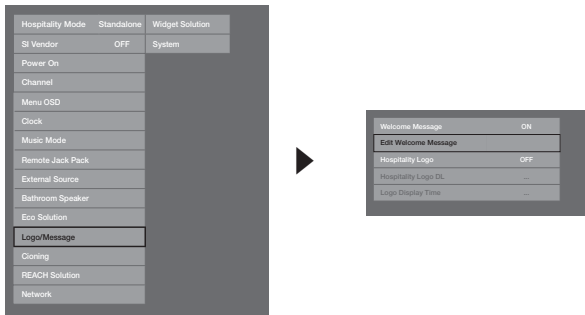
Hotel TV Function			Description
Category	Item	initial value	
Remote Jack Pack	Priority AV	1	If the jack priority is set, the corresponding source is automatically set when a jack is inserted according to the jack priority
	Priority PC	2	If the jack priority is set, the corresponding source is automatically set when a jack is inserted according to the jack priority.
	Priority HDMI	3	If the jack priority is set, the corresponding source is automatically set when a jack is inserted according to the jack priority.
	AV Option	AV	Select RJP AV Source (Source selection depends on Model).
	HDMI Option	HDMI 1	Select which HDMI source of the TV is connected to the RJP jack. (HDMI1/HDMI2/HDMI3)
External Source	USB Pop-up Screen	Default	When USB is connected to the TV : <ul style="list-style-type: none"> • Default : a Popup window appears. • Automatic : This Enters the USB content menu automatically. • Disable : Neither the popup window nor the menu appears.
	External Source Banner	ON	If set to On, the TV displays the External Source Banner (information) when you change the TV source to another external input, press the Info key, or turn the TV on. <ul style="list-style-type: none"> • On : The External Source information is displayed on the TV screen. • Off : The External Source information is not displayed on the TV screen.
	Auto Source	OFF	<ul style="list-style-type: none"> • On : When an external input source is connected to the TV, the TV identifies the input source, and then automatically switches to that input source. • Off : Auto Source function is Off. • PC : Auto Ident PC Input only.
	Anynet+ Return Source	Power On Src	Select the return TV source after stopping an Anynet+(HDMI-CEC) connection. (This function is especially useful for the Guestlink RJP.)
Bathroom Speaker	Sub Amp Mode	2	Determines the Sub AMP operation mode. <ul style="list-style-type: none"> • 0: Turns the Sub AMP function off (PWM off). • 1: Determines the Sub volume according to the main volume control. That is, the sub volume is determined according to the Power On Volume, the Min Volume, and the Max • 2: Determines the volume according to the bathroom control panel setting.
	Sub Amp Volume	6	Sub AMP Volume level at power on initial condition.
Eco Solution	Energy Saving	Off	Adjusts the brightness of the TV to reduce power consumption. <ul style="list-style-type: none"> • Off: Turns off the energy saving function. • Low: Sets the TV to low energy saving mode. • Medium: Sets the TV to medium energy saving mode. • High: Sets the TV to high energy saving mode.
Logo/Message	Welcome Message	OFF	Displays a the Welcome Message for 5 seconds when the TV turns On.
	Edit Welcome Message		Edits the Welcome Message.
	Hospitality Logo	OFF	Turns the Hospitality logo feature On or Off, If On, when the TV is turned on, the Logo is displayed, before the signal from the initial source, for the amount of time set in "Logo Display Time".
	Hospitality Logo DL	...	Downloads the Hospitality logo. Hospitality logo file requirements: <ul style="list-style-type: none"> • BMP or AVI files only. • Max file size : BMP - 960 X 540. AVI - 30MB. • The file can only be named samsung.bmp or samsung.avi.
	Logo Display Time	...	Hospitality Logo Display Time (3/5/7 seconds).
Cloning	Clone TV to USB		Clone the current TV options to a USB memory device.
	Clone USB to TV		Clone the saved TV options on a USB memory device to the TV.
	Setting Auto Initialize	OFF	When Setting Auto Initialize is set to On, and the power is turned off and on or the Master Power is turned off and on, the data is restored to the cloned values. If there is no cloned value, even when the Setting Auto Initialize is set to On, it will be ignored and the operation will be the same as that when Setting Auto Initialize is set to Off

Hotel TV Function			Description
Category	Item	initial value	
REACH Solution	REACH Server Update Time	1hour	Standby REACH Server will be operated, according to time setting
	REACH Update Immediate	OFF	Make TV operate REACH Server after 1 minute in Stand-by mode.
	REACH Server Channel	...	Set the default channel for REACH Server <ul style="list-style-type: none"> None : After Auto Scan, Operate REACH Server Channel value : Operate REACH Server at the channel selected
	REACH Server Version	0000	Display REACH Server version of TV.
	REACH Server Group ID	All	Provided REACH Server ID for operating REACH on a specific set.
	REACH	OFF	Set whether to use REACH function.
	Background TV Sound	ON	Background TV Sound On and Off.
	TICKER	OFF	Ticker On and Off
	App Lite	...	<ul style="list-style-type: none"> On : The Applite content is displayed. Off : The Applite content is not displayed.
	Room Number Setting	...	Set Room Number.
Network	Network Setup		Connect to a wired or wireless network and access the Internet.
	SmartHub Model Setting		Set SmartHub Model.
	SmartHub Setting		Set up SmartHub.
Widget Solution	Widget Mode	ON	Widget Mode ON/OFF.
	Solution Type	Vendor Server	Select type of solution (Vender Server/ SINC Server).
	Server URL Setting		Set server URL.
	License Server IP Setting		Set server IP.
	IPTV Mode	ON	IPTV mode On/Off.
	Virtual Standby	OFF	Virtual Standby mode On/Off. When Virtual Standby is On, TV power consumption will be 9.5W to 17.4W (Depending on the size of the TV screen).
	Instant On	OFF	Setup booting mode.
	Room Num Setting		Set Room Number.
System	Self Diagnosis for TV	...	Enter Self Diagnosis Menu. <ul style="list-style-type: none"> Picture Test: Use to check for picture problems. If the problem appears in the test picture, select Yes and follow the directions on the screen. Sound Test: Use the built-in melody sound to check for sound problems. If the problem occurs during the test, select Yes and follow the directions on the screen.
	Self Diagnosis for HTV	...	HD Function Check Menu On Executing Item Below OSD is displayed Proldiom DTV Channel Key Loss : Ok/Failure (Hotel US) STB SI Vendor Setting : SI Name Ok/Failure Bathroom AMP : Ok/Failure (Hotel EU) RTC : Ok/Failure (Hotel EU) PC Audio Test : Ok/Failure PC Self Test : Ok/Failure
	SW Update	...	SW USB Update function
	Service Pattern	OFF	Same function with SVC Service Pattern
	Sound Bar Out	OFF	ON: TV speaker sound will be mute. Sound will come out through HDMI. You must connect the Sound Bar to hear the sound. OFF: Sound will come out through TV speakers normally.
	TV reset		Factory reset

Welcome Message

The welcome message is used to display custom messages on the TV every time TV is turned on by a Guest in Hotel room.

- Welcome message settings are found in the Hotel Option Menu.
- Welcome message should be ON in order to display the message on power-on.



- A welcome message can be up to 25 characters and it can be edited by changing the text in the Hotel Service menu.
- The following is the list of characters supported by Welcome message:
 - ✍ Capital letters, from A-Z
- Welcome message can be edited by using the navigation, colour & enter key on the Remote in the “Edit Welcome Message” OSD.

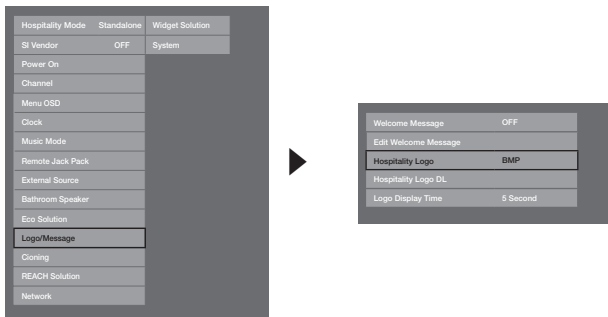


- The Welcome message and hotel logo cannot both be active at the same time.

Hotel Logo

The Hospitality Logo function displays the Hotel's picture image when the TV is initially powered on.

- Hospitality Logo settings are the Hospitality mode menus.
- The Logo Download and Logo Display Menu items are enabled when you turn the Hospitality Logo option on.
- If there is a logo image stored in memory and the Hospitality Logo option is on, the Hospitality logo is displayed when the TV is turned on.
- The Hospitality logo is not displayed when the Hospitality found Logo option is off, even if the logo image has been loaded into the TV.



• Hospitality Logo

- This option lets you choose whether the Hospitality Logo image is displayed or not.
- Initial value is OFF.
- Can be set to OFF or ON.
- When set to ON, the Logo Download and Logo Time Display menu items become accessible.

• Hospitality Logo DL

- This option lets you download the logo image to the TV's memory from a USB device.
- A wait message appears while the image is being copied to the TV.
- A "completed" message appears when the copy operation finishes successfully.
- The word "failed" appears if the copy operation was unsuccessful.
- No USB appears if no USB device is connected.
- No File appears if there is no file to copy on the USB device or the file is in the wrong format must be a BMP file. If No File appears and there is a logo file on the USB device, check the file format.

• Logo File Format

- The TV supports only BMP and AVI format.
- The file name must be samsung.bmp or samsung.avi.
- The maximum resolution of the BMP format is 1280 x 720.
- The maximum file size for AVI format is 50MB.
- The TV does not change the size or scale of the image.

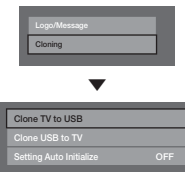
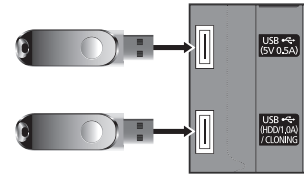
USB Cloning

USB Cloning is used to download user-configured settings (**Picture, Sound, Input, Channel, Setup, and Hotel Setup**) from one TV set and upload them to other TV sets.

All the user-defined settings from the TV (Master Set) can be copied to the USB device.

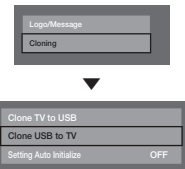
- **Cloning from TV to USB:** This copies stored data from the TV set to the USB device.

1. Insert a USB drive into the USB port on the rear of the TV.
2. Enter the Interactive menu by pressing buttons in order.
 - MUTE → 1 → 1 → 9 → ENTER
3. Press the ▲ or ▼ button to select **"Clone TV to USB"**, then press the ENTER button.
4. When the message **"Clone TV to USB"** is displayed, press the ENTER button.
5. You can verify USB cloning behavior.
 - **In Progress:** during copying data to USB.
 - **Completed:** copy was finished successfully.
 - **Failed:** copy was not finished successfully.
 - **No USB:** USB is not connected.



- **Cloning from USB to TV:** This to downloads the stored data in the USB device to TV set.

1. Insert a USB drive into the USB port on the rear of the TV.
2. Enter the Interactive menu by pressing buttons in order: MUTE → 1 → 1 → 9 → ENTER
3. Press the ▲ or ▼ button to select **"Clone USB to TV"**, then press the ENTER button.
4. When the message **"Clone USB to TV"** is displayed, then press the ENTER button.
5. You can Make sure USB cloning behavior.
 - **In Progress:** copying data to TV.
 - **Completed:** copy finished successfully.
 - **Failed:** copy did not finish successfully.
 - **No USB:** USB is not connected.
 - **No File:** there is no file to copy on the USB.



🔗 Activate copying from USB to TV by pressing ENTER key for 5 seconds.

🔗 The Hotel TV product family does not support the **CLONE** function between models that supports the satellite / T2 operation and models that do not.

For fast, instant cloning during installation, insert a USB drive with master settings from the first TV and press the Enter key for 5 seconds.

Setting Auto Initialize

When you clone settings from one TV to another, you clone both the guest side menu and hotel side menu settings: Picture, Sound, Input, Channel, Setup, and Hotel Setup). This lets you set nearly all of the menu values on your hospitality TVs to the same, standard settings. If you allow guests access to the guest side menus, for example the Picture menu, they can change the settings in those menus so they are no longer standard. If you set the Setting Auto Initialize function to on, the TV automatically restores (initializes) any guest-side menu values to the cloned, standard values when the TV is turned off and then turned on again. Note that Setting Auto Initialize works on cloned guest side menu values only. Settings which have not been cloned are ignored.

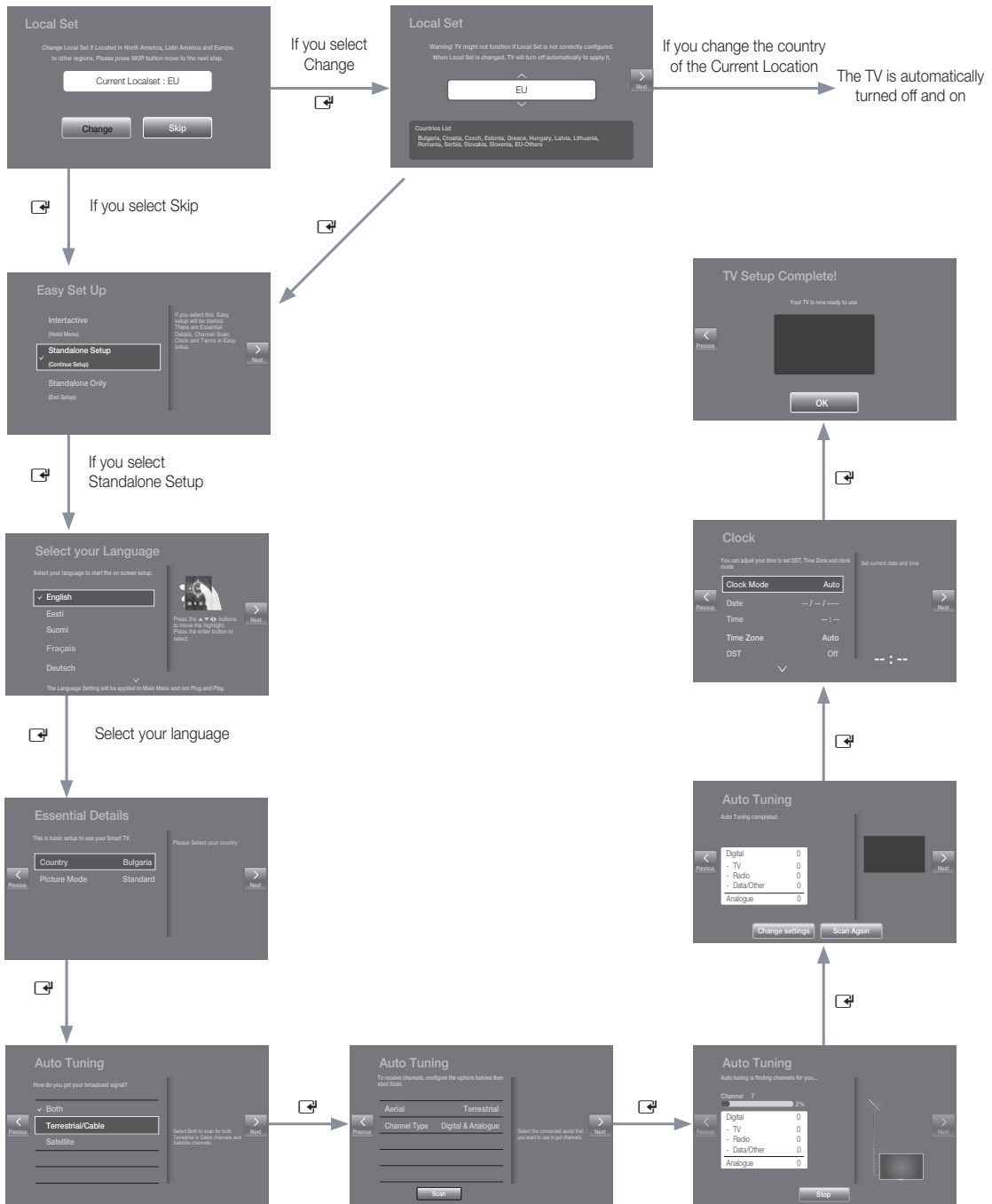
The table below lists the settings that are restored to their cloned values when you set the Setting Auto Initialize function to on.

Menu	Menu Item	Menu	Menu Item
Picture	Picture Mode	Sound	Sound Mode
	Backlight		Sound Effect
	Contrast		Virtual Surround
	Brightness		Dialog Clarity
	Sharpness		Equaliser
	Colour		Speaker Settings
	Tint (G/R)		Additional Settings
	Apply Picture Mode		DTV Audio Level
	Picture Size		Audio Format
	Picture Size		Audio Delay
	Zoom/Position		Dolby Digital Comp
	4:3 Screen Size		Auto Volume
	Auto Adjustment	Reset Sound	
	PC Screen Adjustment	System	Accessibility
	Coarse		Audio Description
	Fine		Subtitle
	Position		Menu Transparency
	Image Reset		High Contrast
	PIP		Focus Zoom
	Advanced Settings		Menu Language
	Dynamic Contrast		Smart Touch Control Settings
	Black Tone		Touch Sensitivity
	Flesh Tone		Onscreen Remote Size
	RGB Only Mode		Voice Control
	Colour Space		Language
	White Balance		Use TV Voice
	10p White Balance		Recognise Voice Gender
	Gamma		Notifications
	Expert Pattern		Devie Manager
	Motion Lighting		Keyboard Settings
	Picture Options		Mouse Settings
	Colour Tone		Time
Digital Clean View	Clock		
MPEG Noise Filter	Sleep Timer		
HDMI Black Level	Wake-up Timer		
Film Mode	Eco Solution		
Auto Motion Plus	Energy Saving		
Picture Off	Eco Sensor		
Picture Mode Memory	No Signal Power Off		
Reset Picture	Auto Power Off		
	Smart Security		
	Auto Protection Time		
	Change PIN		
	General		
	Game Mode		
	BD Wise		
	Sound Feedback		
	Boot Loge		
	Instant On		
	Anynet+(HDMI-CEC)		
	DivX® Video On Demand		

Plug & Play

Hotel Plug & Play automatically performs Hotel mode selection, Country Setup, Clock Setup and Picture mode Setup.

- Hotel Plug & Play is available only one time when power is first turned ON.
- This is available after first setting up the TV and transferring Clone TV data to a USB drive.
- To use next TV, you only need to exit Hotel Plug & Play, connect the USB, then Clone the USB to TV.
- **Depending on model and region, some menus may not exist.**



- Plug & Play OSD
 - Initial Highlight: Interactive
 - If Standalone Only button is selected, Standalone hotel mode is set by default and “Standalone mode is set” OSD is displayed for 3 seconds.
 - TV enters into RF mode automatically after displaying “Standalone mode is set” OSD for 3 seconds.
 - When Interactive mode is selected, the Interactive Setup Menu appears. Press the power off button to exit from the Interactive menu.
 - When Standalone Plug & Play mode is selected, the “Select Menu Language” OSD is displayed.

- Select Menu Language OSD
 - When Standalone Plug & Play is selected from “Easy Set Up” OSD, “Select Menu Language” OSD is displayed.
 - Initial Highlight : English
 - Display time: OSD timeout and operation are the same as Samsung's consumer TV models.
 - If the **ENTER** button is pressed, “Select Area” OSD is displayed.

- Select Country
 - Initial Highlight: United Kingdom.
 - The Country OSD is displayed and the area can be selected.

- Clock setting OSD
 - Display time: 30 seconds.
 - The Clock Set item OSD is displayed
 - If **ENTER** button is pressed after setting the clock or in Auto, Picture Mode OSD is displayed.

- Auto Search Mode OSD
 - If skip option is selected, this goes to Clock setting OSD.
 - If the **ENTER** button is pressed, auto searching of channels is performed.
 - The OSD Display time, from the time that Auto Store is started to the time that Auto Sort is completed, is 30 seconds.

- Picture Mode OSD
 - Initial Highlight: Standard.
 - The Picture Mode OSD is displayed and the Dynamic or a Standard Picture mode can be selected.
 - After selecting the picture mode and the TV enters Standalone Setup Menu OSD, press power off to exit.

Multi Code Remocon

Multi Code Remocon is a special transmitter which is designed to control each TV with one remote.

This is useful where there is more than one TV in a location, such as in a hospital the set ID number is displayed in the source osd. It is possible to support up to 9 different remote key transmissions for multiple codes.

Each TV has an initial code of "0".

- The ID code can be set and reset in Analog TV mode or PC mode. (not available in TTX channel or DTV channel.
- ID code can be from 0 to 9.
- Press the Blue Key for over 7 seconds and then select the number button to set the code.
- Set ID OSD appears.
- The following words appear: "Remote control code is set to x. If you want to change Remote control code. Enter the digit you want to change." X is the digit number This OSD displays until Exit is pressed.



Remote control code is set to 0. If you want to change the Remote control code, enter the chosen digit.

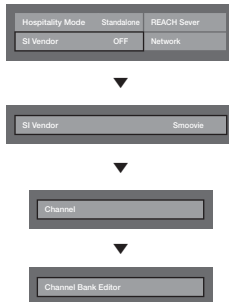
- For example, TV and Remote will be set to ID code #1 if the user presses #1.
- The following words appear: "Remote control code is changed to 1" At this point, the TV can be controlled only by the remote with the same ID code as the TV.
- TV, the following words will be displayed. " TV ID x"(x is the TV's ID)
- To reset the ID code, press the Yellow key for over 3 seconds. the ID code for both the TV and Remote are reset to "0". "Remote control code is set to 0." appears.

CH Bank Editor (Smovie TV Only)

Channel Bank Editor edits channels, with 3 different Bank Options.
Depending on the Bank card, there are specific channels Hotel customers can enjoy.

Setting the CH Bank Editor under Stand-alone Mode

1. Enter the Hotel Standalone menu by "MUTE+1+1+9+Enter"
2. Please select SI vendor : "Smovie"
3. find the new menu option, "Channel Bank Editor"
4. Enter the "Channel Bank Editor"



<Depending on model and region, some menu items may not exist>

5. Edit the channel bank like below example.
 - a. BANK1 (Free channel): Select the channel that will be used when remote doesn't have any card.
 - b. BANK2 (Family Card - Green): Select the channel that will be used when remote has a GREEN CARD.
 - c. BANK3 (Adult Card - Red): Select the channel that will be used when remote has a RED CARD.

Channel Bank Edit				
Registered	Bank1 (4)	Bank2 (6)	Bank3 (36)	
1 1futech	<input type="checkbox"/>	<input type="checkbox"/>	<input checked="" type="checkbox"/>	
2 BBC1	<input checked="" type="checkbox"/>	<input checked="" type="checkbox"/>	<input checked="" type="checkbox"/>	
3 24ore.tv	<input checked="" type="checkbox"/>	<input checked="" type="checkbox"/>	<input checked="" type="checkbox"/>	
4 C3	<input type="checkbox"/>	<input checked="" type="checkbox"/>	<input checked="" type="checkbox"/>	
5 BBC World	<input type="checkbox"/>	<input checked="" type="checkbox"/>	<input checked="" type="checkbox"/>	
6 C5	<input type="checkbox"/>	<input checked="" type="checkbox"/>	<input checked="" type="checkbox"/>	
7 Coming Soom	<input type="checkbox"/>	<input checked="" type="checkbox"/>	<input checked="" type="checkbox"/>	
8 S2	<input type="checkbox"/>	<input type="checkbox"/>	<input checked="" type="checkbox"/>	
9 S2	<input type="checkbox"/>	<input type="checkbox"/>	<input checked="" type="checkbox"/>	

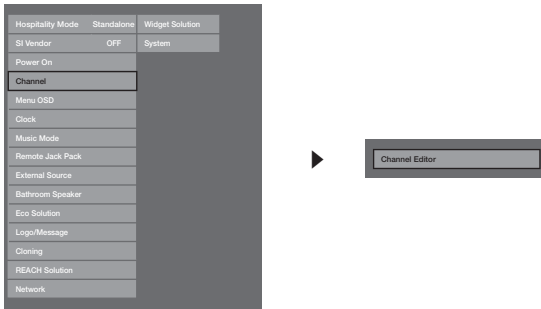
References of using SMOOVIE Remote Controller

1. If you select SMOOVIE as the SI vendor, you should use the SMOOVIE Remote Controller.
2. With the Numeric keys of the remote controller, users can select only the Bank1 channel.
To change the channel using the Green or Red Card, please use channel up/down keys.
3. For the Channel guide or the Channel list, users can see only Bank1 channel list.

Channel Editor

Channel Editor edits channel number and name.

- Use Channel Editor to sort the channels as user-desired channel numbers.



<Depending on model and region, some menu items may not exist>

Simple Steps for channel Editor under Stand-alone Mode

Step	Broad Outline
1	Operate 'Channel Auto Store' in Hotel Option Menu
2	Enter 'Channel Editor' in Hotel Option Menu
3	Compile a table related to the final channel lists you want to have
4	Rearrange channels with the TOOLS Button based on the table you compiled
5	Press the EXIT or RETURN Button to exit.

<please refer to the following details>

Smovie On sequence

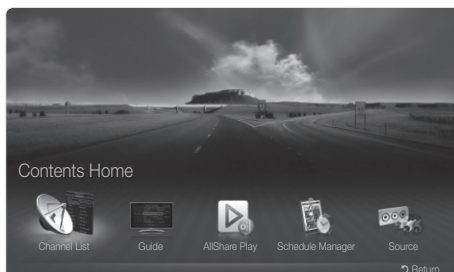
Step	Smovie TV used (Air/ Cable)			
	Mixed Channel Map On (Air and Cable both used)		Only Air or Cable used	
	If the tv starts with Hotel P&P	If P&P already done	If the tv starts with Hotel P&P	If P&P already done
1	Do the P&P, except channel store	Enter Hotel menu	Do the P&P all (Air or Cable auto tune)	Enter Hotel menu
2	After P&P TV shows hotel menu	Setup Mixed Channel Map On	After P&P TV will show hotel menu	Select channel type - ATV or ADTV for Air - CATV or CDTV for cable
3	Setup Mixed Channel Map On	TV power off & on	Select channel type - ATV or ADTV for Air - CATV or CDTV for cable	Select smovie TV in Hotel menu
4	Make TV power off & on	Enter Hotel menu	Select smovie TV in Hotel menu	Select Channel Setup
5	Enter Hotel menu	Select smovie TV in Hotel menu	Select Channel Setup (can be skipped)	Select "Air" or "Cable" to auto tune
6	Select smovie TV in Hotel menu	Select Channel Setup	Select "Air" or "Cable" to auto tune (can be skipped)	setup CH Bank Editor
7	Select Channel Setup	Select "Air + Cable" to auto tune	Setup CH Bank Editor	After power off & on, user can use TV
8	Select "Air + Cable" to auto tune	Setup CH Bank Editor	After power off & on, user can use TV	
9	Setup CH Bank Editor	After power off & on, user can use TV		
10	After power off & on, user can use TV			

Step	Smovie TV used(Satellite)			
	Mixed Channel Map On (Satellite and Air or Cable both usedused)		Only Satellite used	
	If the tv starts with Hotel P&P	If P&P already done	If the tv starts with Hotel P&P	If P&P already done
1	Do the P&P except channel store	Enter Hotel menu	Do P&P all: Air or Cable auto tune)	Enter Hotel menu
2	After P&P TV will show hotel menu	Setup Mixed Channel Map On	after P&P TV shows hotel menu	Select channel type - ATV or ADTV for Air - CATV or CDTV for cable
3	Setup Mixed Channel Map On	Make TV power off & on	Select channel type - ATV or ADTV for Air - CATV or CDTV for cable	Select smovie TV in Hotel menu
4	Make TV power off & on	Enter Hotel menu	Select smovie TV in Hotel menu	Select Channel Setup
5	Enter Hotel menu	Select smovie TV in Hotel menu	Select Channel Setup (can be skipped)	Select Satellite to auto tune
6	Select smovie TV in Hotel menu	Select Channel Setup	Select Satellite to auto tune (can be skipped)	Setup CH Bank Editor
7	Select Channel Setup	Select Satellite to auto tune	Setup CH Bank Editor	After power off & on, user can use TV
8	Select Satellite to auto tune	Setup CH Bank Editor	After power off & on, user can use TV	
9	Setup CH Bank Editor	After power off & on, user can use TV		
10	After power off & on, user can use TV			

Channel List

You can view channel information, **All**, **TV**, **Radio**, **Data/Other**, **Analogue** or **Favourites 1-5**.

When you press the **CH LIST** button on the remote control, **Channel List** screen displays immediately.



* The displayed image may differ depending on the model.

- **All**: Shows all currently available channels.
- **TV**: Shows all currently available TV channels.
- **Radio**: Shows all currently available radio channels.
- **Data/Other**: Shows all currently available MHP or other channels.
- **Analogue**: Shows all currently available analogue channels.
- **Favourites 1-5**: Shows all favourite channels.

If you want to view added favourite channels press the **CH LIST** button and use the **◀▶ (Ch. Mode)** button to move between **Favourites 1-5**.

Using the control buttons with the **Channel List**.

- **Tools** (Tools): Displays the option menu.
- **◀▶ (Ch. Mode / Channel)**: Move to the **All**, **TV**, **Radio**, **Data/Other**, **Analogue** or **Favourites 1-5**.
- When you select the Programme View in **Tools** menu, you can move to other channels using **◀▶ (Channel)** button.
- **Watch / Information** (Watch / Information): Watches the channel you selected. / Displays details of the selected programme.
- **◀▶ (Page)**: Move to the next or previous page.

How to use Schedule Viewing in Channel List

(digital channels only)

When you set the **Schedule Viewing** in **Channel List**, you can only set the programme in **Programme View**.

1. Press the **CH LIST** button, then select a desired digital channel.
2. Press the **TOOLS** button, and then select **Programme View**. The programme list for that channel appears.
3. Press the **▲ / ▼** buttons to select the desired programme, then press the **ENTER** (Information) or **INFO** button.
4. Select **Schedule Viewing**, then press the **ENTER** button when done.

If you want to cancel **Schedule Viewing**, follow steps 1 through 3. Select **Cancel schedule**.

Using Option Menu **TOOLS**

Set each channel using the **Channel List** menu options (**Programme View**, **Edit Favourites**, **Lock/Unlock**, **Edit Channel Name**, **Edit Channel Number**, **Delete**, **Information**, **Sort**, **Edit Mode**).

Option menu items may differ depending on the channel status.

1. Select a channel and press the **TOOLS** button.
2. Select a function and change its settings.
 - **Programme View**: Displays the programme when a digital channel is selected.
 - **Edit Favourites**: Set channels you watch frequently as favourites. Add or delete the selected channel in **Favourites 1-5**.
1. Select the **Edit Favourites**, then press the **ENTER** button.
2. Press the **ENTER** button to select **Favourites 1-5**, then press the **OK** button.
 - One favourite channel can be added to several favourites among **Favourites 1-5**.
 - **Lock/Unlock**: Lock a channel so that the channel cannot be selected and viewed.
 - This function is available only when the **Channel Lock** is set to **On**.
 - The PIN input screen appears. Enter your 4-digit PIN. Change the PIN using the **Change PIN** option.
 - **Edit Channel Name** (analogue channels only): Assign your own channel name.
 - **Edit Channel Number** (digital channels only): Edit the number by pressing the number buttons.
 - Some areas may not be able to support **Edit Channel Name** and **Edit Channel Number**.
 - **Delete**: You can delete a channel to display the channels you want.
 - **Information**: Displays details of the selected programme.
 - **Sort**: Changes the list ordered by channel number or channel name.
 - **Edit Mode**: Select desired channels and edit them.

Using Option Menu **TOOLS**

Set each channel using the menu options (**Edit Favourites**, **Lock/Unlock**, **Delete**, **Deselect**, **Select All**).

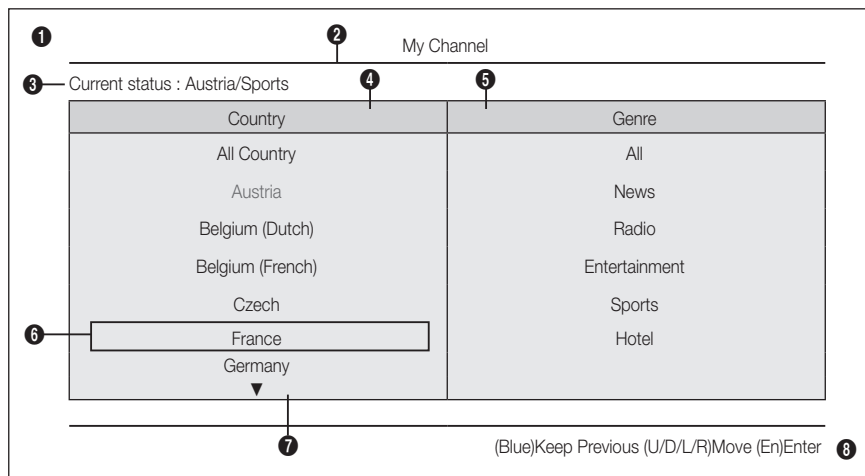
1. Press the **TOOLS** button in **Channel List** screen, then select the **Edit Mode**. A check box appears to the left of the channel.
2. Press the **▲/▼** buttons to select the desired channel, then press the **ENTER** button. The (✓) mark indicates the channel you've selected.
 - You can select more than one channel.
 - Press the **ENTER** again to deselect the channel.
3. Press the **TOOLS** button, then select a function and change its settings.
 - **Edit Favourites**: Set the selected channels you watch frequently as favourites.
 - The **Edit Favourites** screen has five groups (**Favourites 1**, **Favourites 2**, etc.). You can add a favourite channel to any one of the groups. Press the **▲/▼** buttons to select a group.
 - **Lock/Unlock**: Lock a channel so that the channel cannot be selected and viewed.
 - This function is available only when the **Channel Lock** is set to **On**.
 - The PIN input screen appears. Enter your 4-digit PIN. Change the PIN using the **Change PIN** option.
 - **Delete**: You can delete a channel to display the channels you want.
 - **Deselect**: Deselect the selected channels.
 - **Select All**: Select all the channels in the channel list.

My Channel

Determines the country and genre for the channels provided by the hotel, and if the user selects a country and genre, shows the corresponding channels.

- You must select the country first, or you can not set a genre.
- If you select the genre without adding any channels, the channel list displays all of the available channels.
- My Channel works in Standalone mode only.
- SI Vendor in Standalone mode: This does not work if Smoovie is selected.
- This is in the Hotel Options in Hotel Menu > Service Mode and can be turned on or off.
- The option only works when it is set to On.
- Channel Composition [Genre Mode]

Standard	Category	Ch. Mode	Antenna Mode Activation		Description
			Air/Cable	Satellite	
Hotel	Genre	All (Default)	0	0	Provide genre channel mode by each country that master has managed in factory mode.
		News	0	0	
		Radio	0	0	
		Entertainment	0	0	
		Sport	0	0	
		Hotel	0	0	



* For the number of items to be displayed in the list, refer to the design document.

Key Guide

Button	Action	Nav. Help
BLUE	Returns to the screen. (Genre setup: Last Country & Genre)	Keep Previous
ENTER	Selects an item.	Enter
Ch. Up/Down	Move the highlight by page.	(No Guide)
UP/DOWN	Navigates the each country, genre list. (in a circular manner.)	Move
RIGHT	Selects the highlighted item, and then move the highlight to Genre section.	
RETURN	Returns to the screen. (Genre setup: Last Country & Genre)	(No Guide)
EXIT	Returns to the screen. (Genre setup: Last Country & Genre)	(No Guide)

Notes

- This section describes the layout of the Front UI that appears when the TV is turned on. (Factory Mode > Genre Mode: Enable)
- The genre is a sub-list for each country.
- The broadcast screen that was being displayed the last memorial channel.
 - If user want to keep the previous country & genre channel map, press the 'BLUE', **RETURN**, and **EXIT** remote-control key to close the Front UI.

Etc.

- Default Highlight : Last Memory items (Country, Genre)
- Timeout (60 sec)

Elements

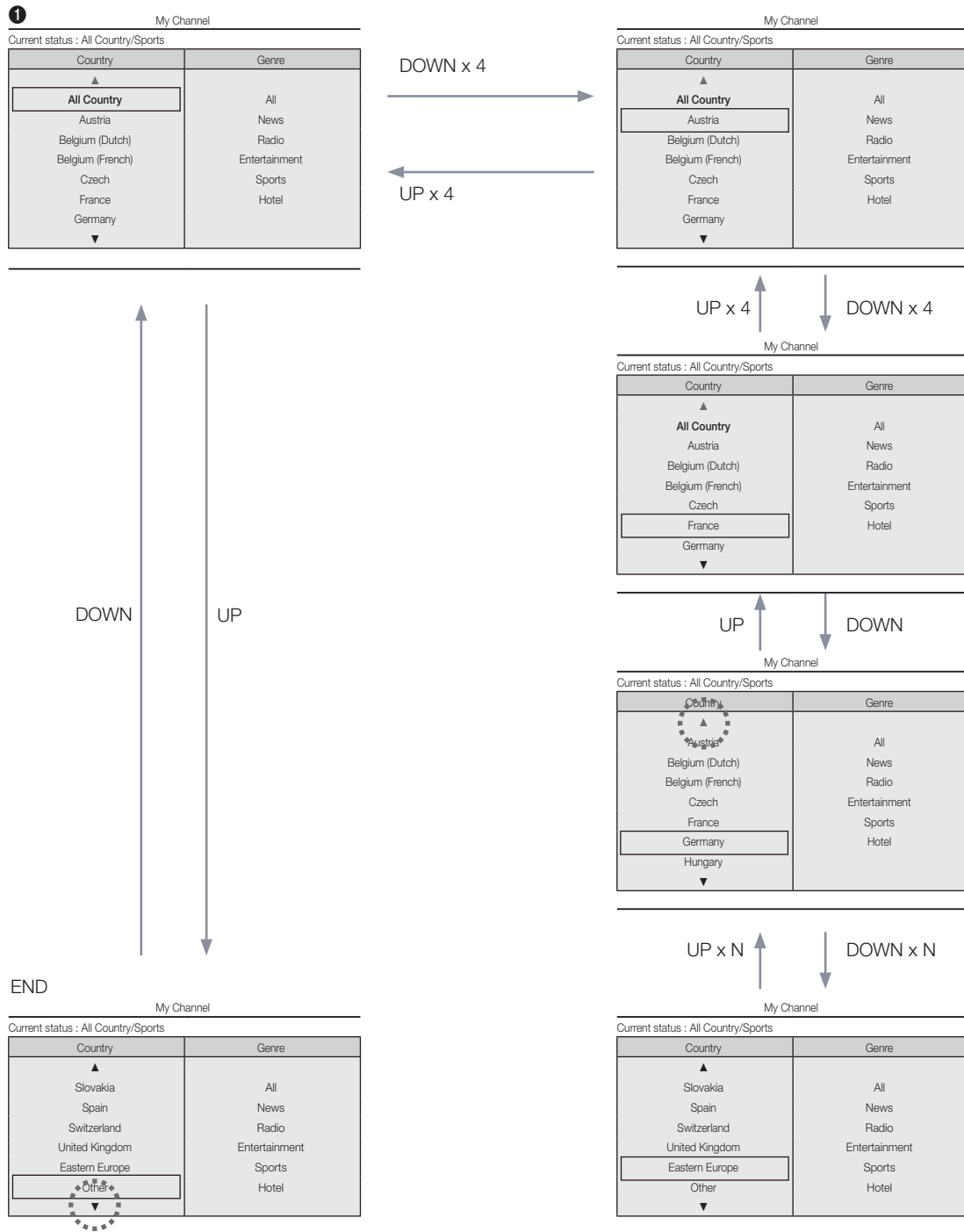
No	Name	Description
1	Background Screen	Displays the last memorized channel that appears when TV is turned on.
2	Function Title	This is name of the function.
3	Current Status	Display current settings the Country/Genre.
4	Country Items	The item for the country list is displayed. Displays the last selected country.
5	Genre Items	The item for the genre list is displayed. Displays available genre items by each country that master managed in factory mode. (always provide 'All' item) Displays the last selected genre.
6	Highlight	If the item title is too long to be displayed within the area, Auto Text Sliding works.
7	Indicator	This is displayed when there is a previous or next page.
8	Nav. Help	The key guide is right-aligned.

Highlight Interaction [Country Items]

- This page is only to indicate possible interactions. It may not be exactly identical to actual screens.

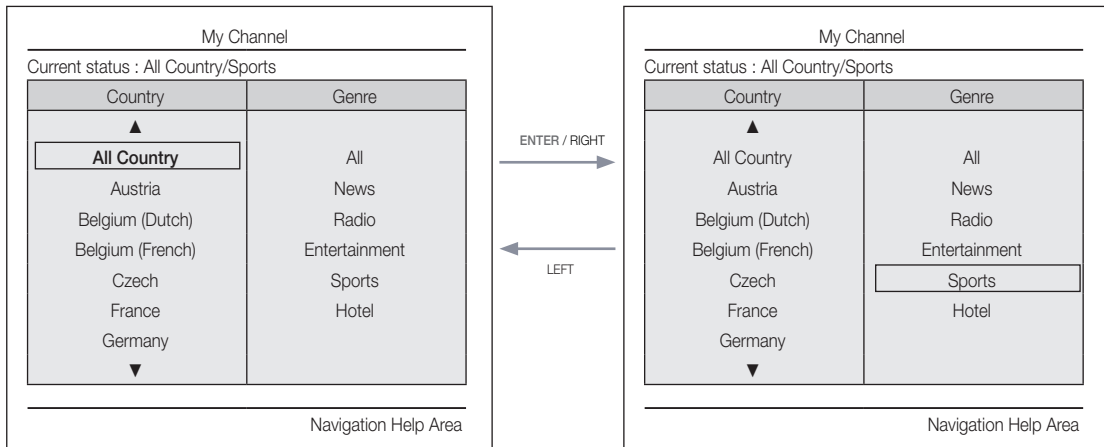
Notes

- Users can navigate the items in each country & genre list by pressing the up or down remote control keys.
- Circular navigation is supported.

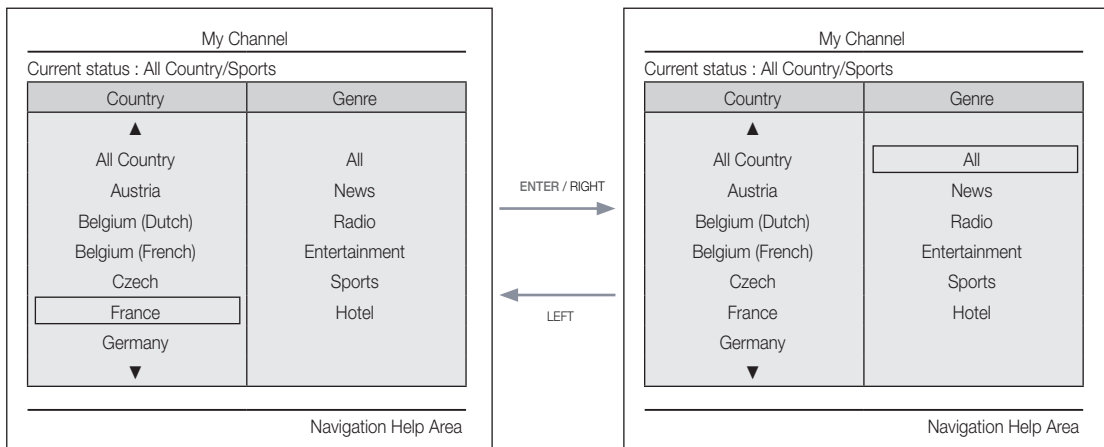


Highlight Interaction [Default Genre]

- This page is only to indicate possible interactions. It may not be exactly identical to actual screens.



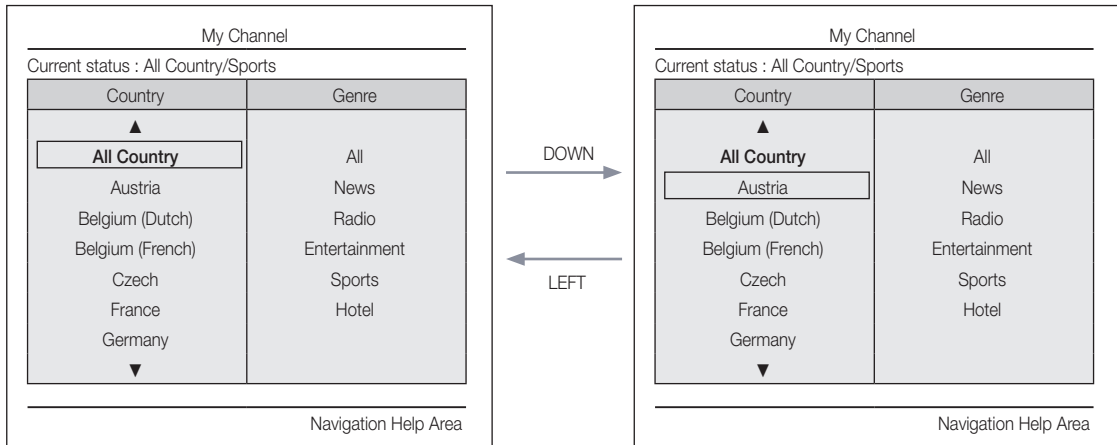
- The current selection of the country is high-lighted.
- Default High-light: The current selection of the genre.



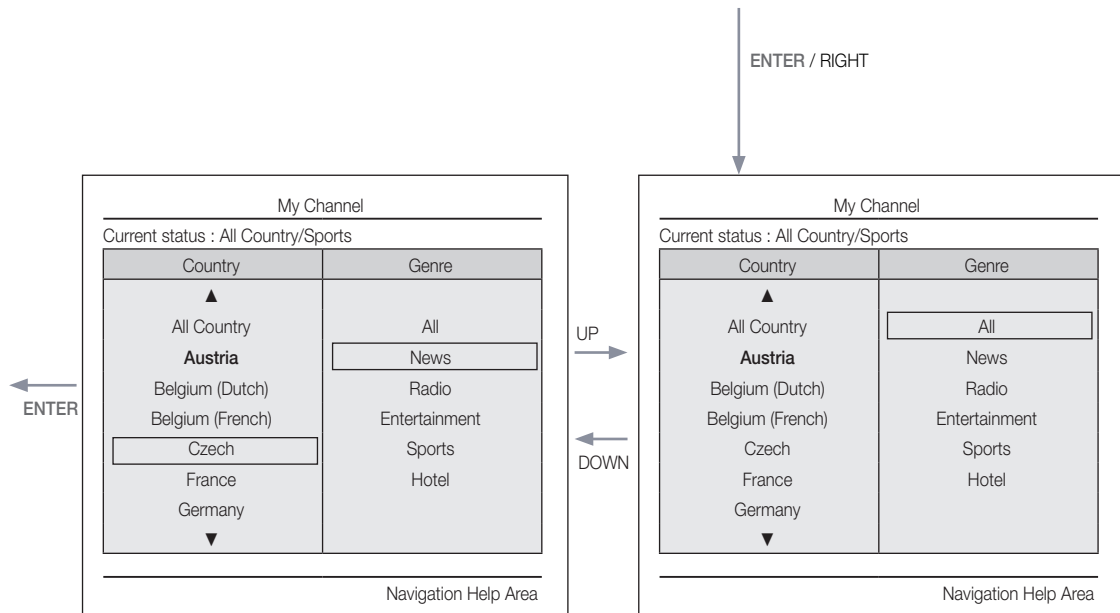
- Seems source error, it should be read as "The other item of the county is high-lighted.". Please verify. (ex. France)
- Default Highlight : All

Mode Change Interaction 1 (1/2)

- This page is only to indicate possible interactions. It may not be exactly identical to actual screens.



- Current Genre Mode : All Country / Sports

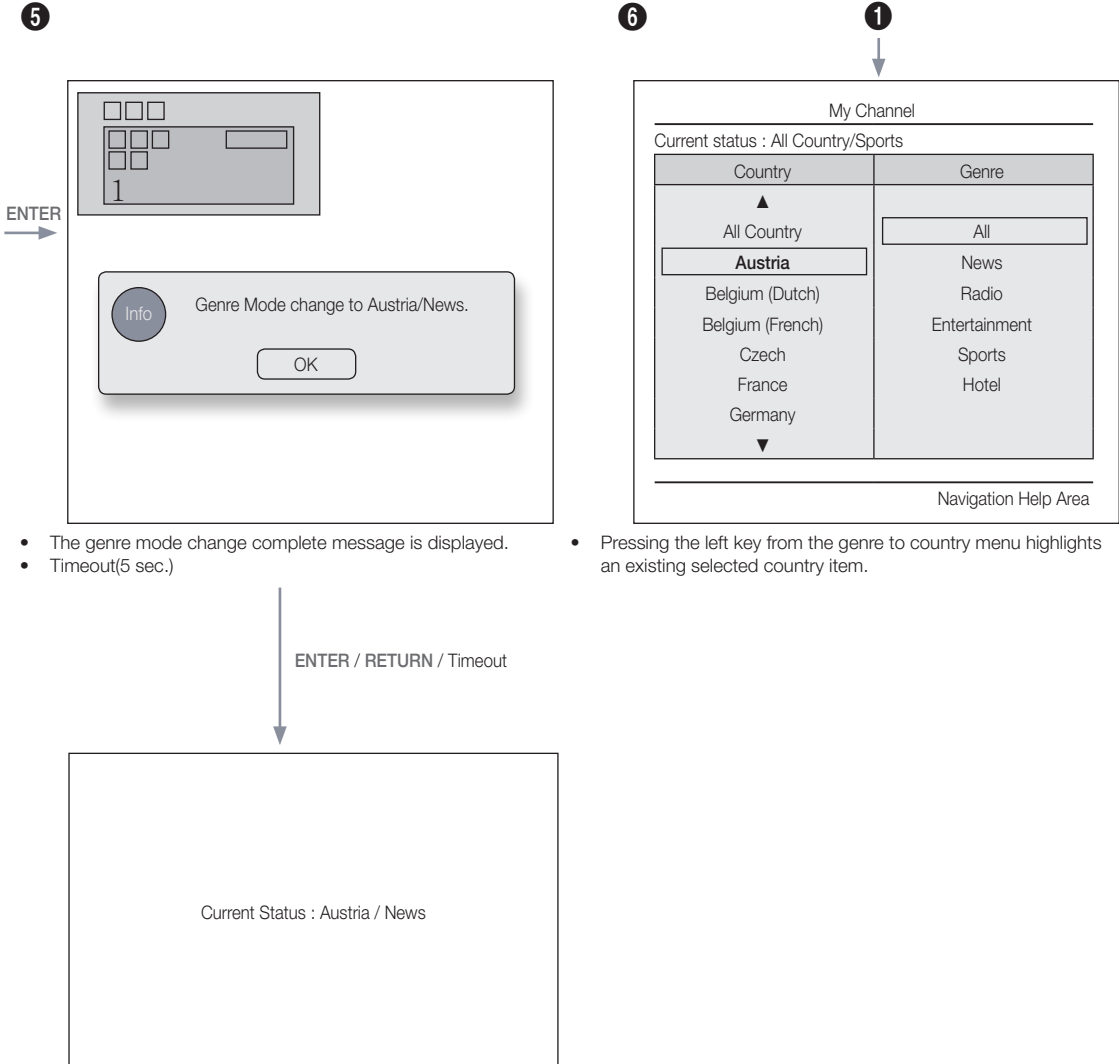


- If the country is selected, highlight moves to genre menu automatically.

6

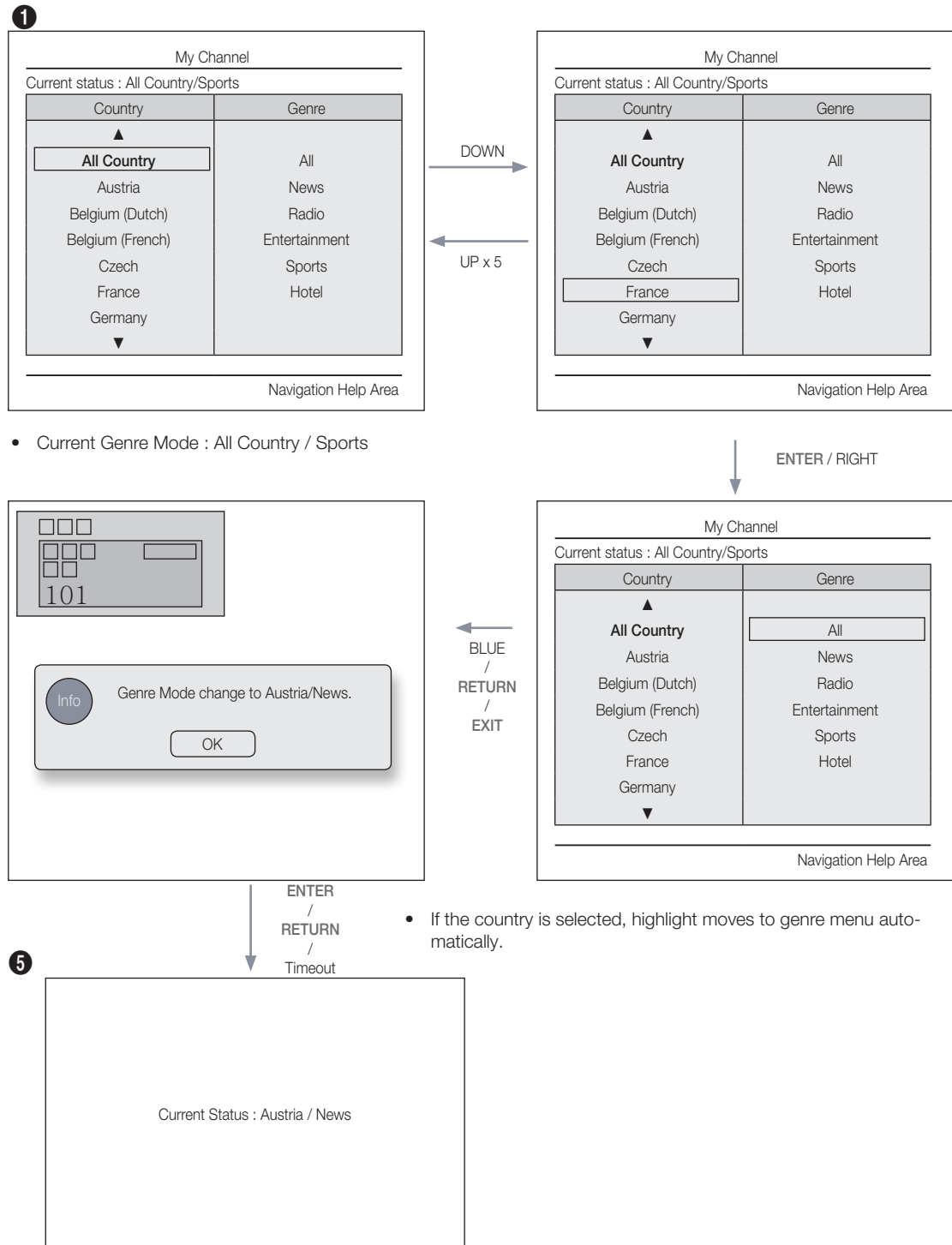
Mode Change Interaction 1 (2/2)

- This page is only to indicate possible interactions. It may not be exactly identical to actual screens.



Mode Change Interaction 2 (1/2)

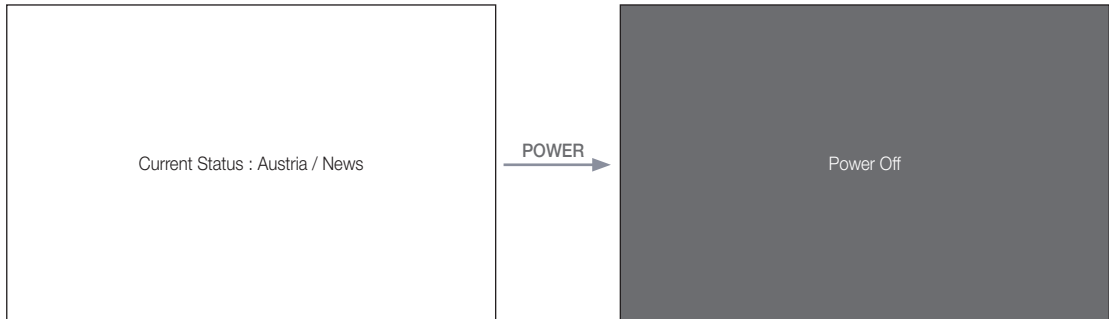
- This page is only to indicate possible interactions. It may not be exactly identical to actual screens.



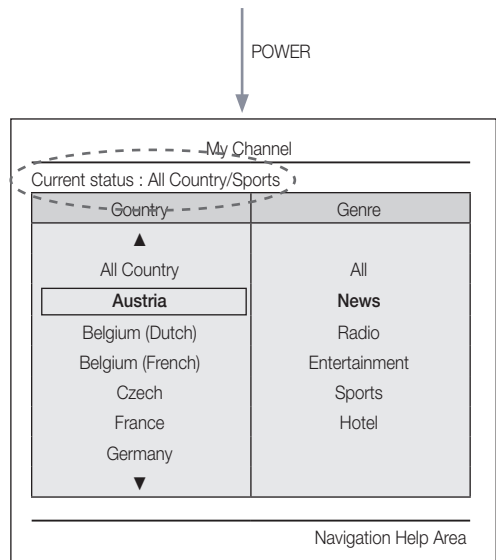
Power On Scenario [Last Memory]

- This page is only to indicate possible interactions. It may not be exactly identical to actual screens.

1



- Current Genre Mode : Austria / News



- Current Genre Mode : Austria / News

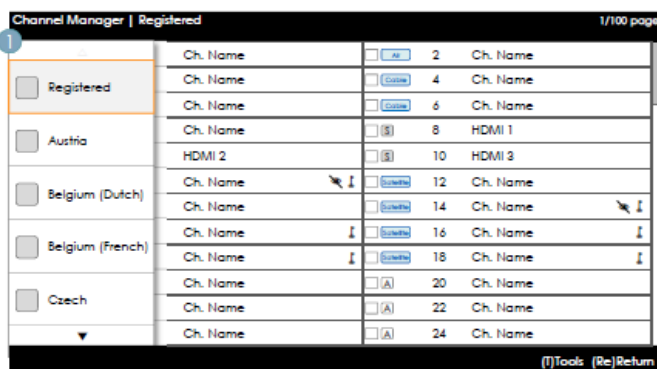
Genre Editor: This configures the genres of each of the hotel TV channels.

- This can be used through the Hotel Menu (Factory).
- Supported genres include News, Radio, Entertainment, Sports and Hotel.
- More than one genre can be selected for each channel at the same time.

Country Editor (Channel Editor): This is the editor that configures the country for each of the hotel TV channels.

- Supported countries (20 countries): Austria, Belgium, China, Denmark, Finland, France, Germany, Greece, Italy, Japan, Netherlands, Norway, Portugal, Russia, Korea, Spain, Sweden, Turkey, USA
- If more than one channel is set to a country, the country is registered as a category and users can view the channels by country.
- More than one country can be set to a channel. If the user selects a category, only the channels corresponding to the country are displayed in the channel list.
- If any channel for which the country is set is selected from the channel list, the Edit Countries item is added to the Tools. Otherwise, the Add to Countries item is added to the Tools.
- * If the corresponding function is executed, a country for the selected channel can be set or canceled.
- Front UI
- Provides the screen where the user can select a country or genre when the user turns the power on.

Left Frame Layout



Key Guide

Button	Action	Nav. Help
ENTER	Selects or enters the corresponding Channel Browser area.	(No Guide)
RETURN	Selects or enters the corresponding Channel Browser area.	Return
UP/DOWN	Moves the highlight up or down.	(No Guide)
RIGHT	Moves the highlight to the Channel Browser area.	(No Guide)
INFO	Shows the Category Info.	(No Guide)
TOOLS	Shows the utility function menus.	Tools
EXIT	Cancels and returns to the previous step (Factory Mode).	(No Guide)

Notes

- This is a component of the Left Frame (Country Categories).

Etc.

- Default Highlight: 'The currently selected country'

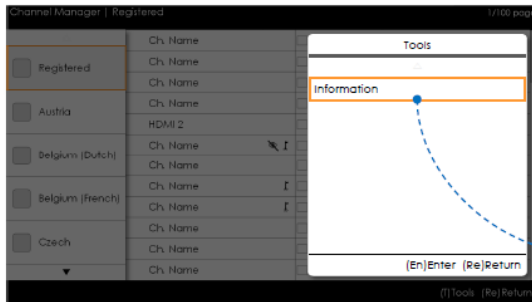
Elements

No	Name	Description
1		<ul style="list-style-type: none"> When the user enters this screen, the currently selected default item is highlighted. The Country Icon + Category Name are provided. (If the highlight is in the Main Frame, only the icon is displayed.) Moving the highlight <ul style="list-style-type: none"> Pressing the up or down button moves the highlight. If the items cannot be displayed on one page, up and down indicators are provided. Once the highlight is moved to a category, the channel list corresponding to the corresponding category is loaded to the Main Frame.

Left Frame [Country Categories]

Standard	Category	Ch. Mode	Antenna Mode Activation		Description
			Air/Cable	Satellite	
Hotel	Original Tuned	Registered	0	0	<ul style="list-style-type: none"> Lists all the channels registered by the Auto Tune operation.
	Country	All Country	0	0	<ul style="list-style-type: none"> Provides the list of channels and sources specified in the Registered Channels list. All Country is the sum of all channels registered to each country. (This is only provided to end users.)
		Country 1	0	0	
		Country 2	0	0	
.	0	0			

Tools [Registered/Countries Categories]



- Channel Manager > Channel Category > Tools > Info

Registered	: 3210
Austria	: 400
Belgium(Dutch)	: 700
Belgium(French)	: 0
Czech	: 60
...	: 70
...	: 80
	▼
Ok	

- The items are displayed without 'Channel'.
- If the Registered/Country item in the Left Frame is highlighted, you can enable the corresponding window by pressing the 'INFO' remote control key.
- All countries are displayed.
- navigate country items by pressing the up or down key. Indicators are provided.

Notes

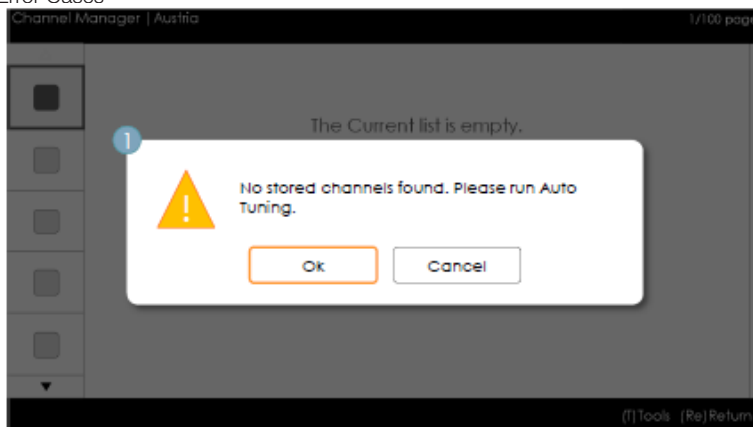
- This is a definition of the Tools menu in the Left Frame Category.
- Only the Info item for each Register/Country is provided.

Elements

Category	Tools menu	Descriptions
Registered, Country	Information	Registered Channels. The number of channels of each country.

- The items are displayed without 'Channel'.

Error Cases

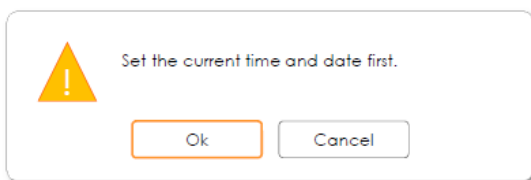


Notes

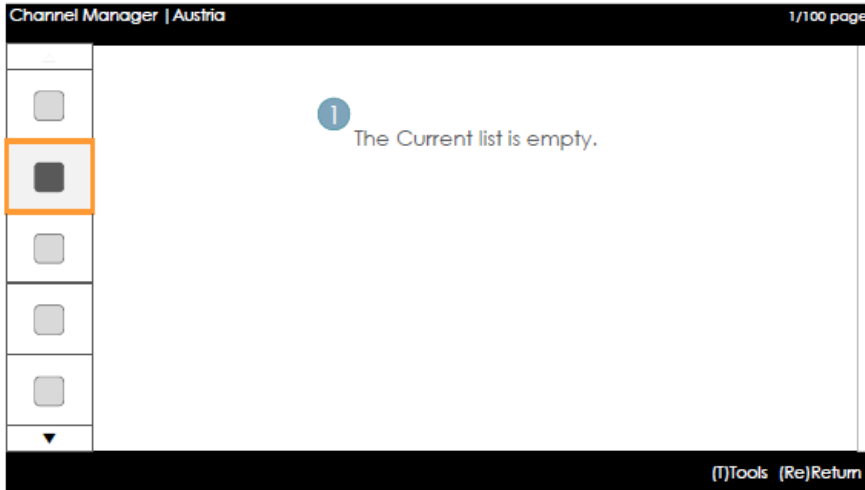
- This is the message for when there are no saved channels in the Registered Channels list.

Elements

No	Name	Description
1	Message	<ul style="list-style-type: none"> • When entering the browser, if the Registered channels item is empty, a popup message is displayed which enables users to switch to the Auto Store (Program) menu. • When both the time and the channel are not configured, and a user enters the Channel Manager, a message that allows the user to switch to the Auto Tuning (Auto Program) operation is displayed in the same way as above.



- This is the message when the time is not configured.
 - If the time is not configured, the message is displayed in Factory Mode before entering the Channel Manager.



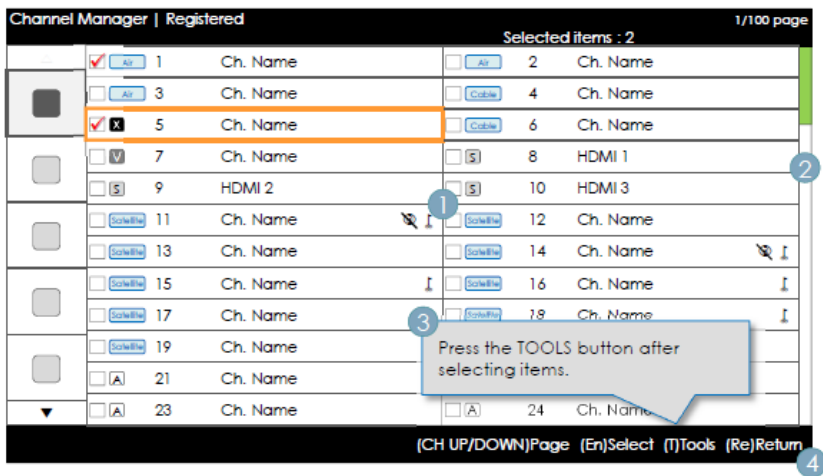
Notes

- This is the component for when there are no channels registered to the country category.

Elements

No	Description	Description
		The message is displayed when the currently selected country does not contain any items.

Main Frame [Channel Browser]



Key Guide

Button	Action	Nav. Help
CH UP/DOWN	Moves the page.	Page
ENTER	Selects or enters the corresponding Channel Browser area.	Select
RETURN	Returns to the previous step (Factory Mode).	Return
UP/DOWN	Moves the highlight up or down.	(No Guide)
RIGHT	Moves the highlight to the Channel Browser area.	(No Guide)
INFO	Shows the Category Info.	(No Guide)
TOOLS	Shows the utility function menus.	Tools
EXIT	Cancels and returns to the previous step (Factory Mode).	(No Guide)

Notes

- This is a component of the Main Frame (Channel Browser).
- The initial highlight is on the channel before entering Factory Mode or the external input.



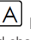

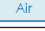




Elements

No	Name	Description
1	Main Frame	<ul style="list-style-type: none"> • Shows the channel or the source list of the currently selected category.
2	Scroll Bar	<ul style="list-style-type: none"> • Shows the position of the current page amongst the total amount of pages.
3	Navigation Help Area	<ul style="list-style-type: none"> • This is displayed whenever a user enters the Channel Manager. (If a user exits and then reenters the Channel Manager, it is displayed again.) • This disappears when the timeout (5 sec.) is reached or a user presses a key.
4	Navigation Help Area	<ul style="list-style-type: none"> • The currently configured country information and the RED buttons are left-aligned. They are displayed and navigated by group graphically. The key guide is right-aligned.

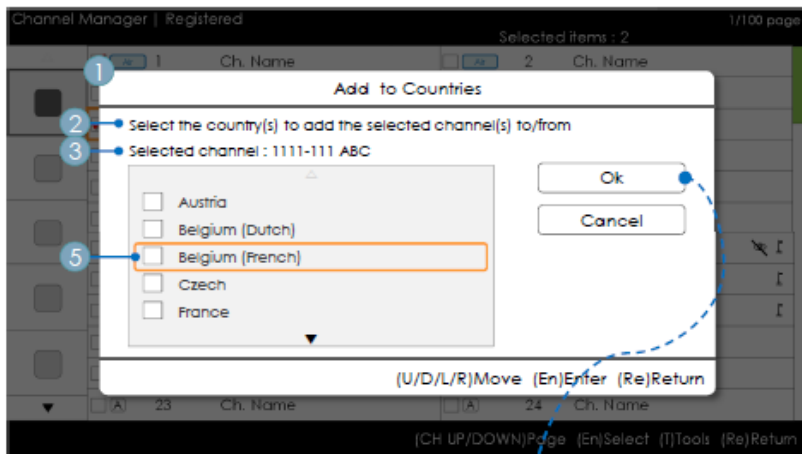
Channel Common Elements [+ Icon-method]
Channel list representation rules

Standard	Item	Construction
ATSC	Digital channels	<ul style="list-style-type: none"> Check Box + Status Icon + Digital Channel Number + Channel Name Channel number representation format: ###-### (The channel number is represented by '-'.)
	Analog channels	<ul style="list-style-type: none"> Check Box + Analog Icon + Analog Channel Number + Channel Name Channel number representation format: ### ('-' is not used to represent analog channel numbers.)
DVB (CHEM)	Digital channels	<ul style="list-style-type: none"> Check Box + Status Icon + Digital Channel Number + Channel Name Channel number representation format: ### (For the maximum length of the channel number, follow the regional specifications.)
	Analog channels	<ul style="list-style-type: none"> Check Box + Analog Icon + Analog Channel Number + Channel Name Channel number representation format: ### (For the maximum length of the channel number, follow the regional specifications.)

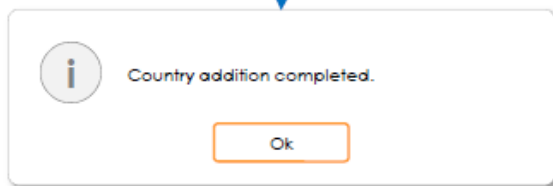
Channel list icon representation rules

Item		Example		Priority
Dynamic SI Icon	Channels deleted by Dynamic SI	<input type="checkbox"/>  NNNNNNNN CH. NAME	<ul style="list-style-type: none"> Channels that have been deleted by the Dynamic SI but not by the user. 	1
	Channels added by Dynamic SI	<input type="checkbox"/>  NNNNNNNN CH. NAME	<ul style="list-style-type: none"> Channels that have been added by the Dynamic SI but not by the user. 	2
Analog Channel Icon		<input type="checkbox"/>  NNNNNNNN CH. NAME (The edited channel name.)	<ul style="list-style-type: none"> The analog channel icon is displayed. 	3
Source Channel Icon		<input type="checkbox"/>  NNNNNNNN CH. NAME	<ul style="list-style-type: none"> A channel that is an input source. 	4
Antenna Icon	Air	<input type="checkbox"/>  NNNNNNNN CH. NAME	<ul style="list-style-type: none"> Represents the live channels from the antennas. The Air, Cable or Satellite antenna icons are displayed with the lowest priority. 	5
	Cable	<input type="checkbox"/>  NNNNNNNN CH. NAME		
	Satellite	<input type="checkbox"/>  NNNNNNNN CH. NAME		
Scrambled Channel Icon		NNNNNNNN CH. NAME 	<ul style="list-style-type: none"> The scrambled channel icon. This appears for the Satellite antenna. 	–
Video Mute		NNNNNNNN CH. NAME 	<ul style="list-style-type: none"> A screen-muted channel. Audio and channel information is provided. 	–

Add to Countries / Edit Countries (1/2)



- Channel Manager > Browser > Tools > Add to Countries



Key Guide

Button	Action	Nav. Help
ENTER	Selects the highlighted item.	Enter
RETURN	Cancels and returns to the previous screen (Tools).	Return
UP/DOWN	Moves the highlight over country items.	Move
LEFT/RIGHT	Moves the highlight.	Move
INFO	N/R	N/R
TOOLS	Closes the current window and displays the 'Tools' menu.	(No Guide)
EXIT	Cancels and returns to the previous step (Factory Mode).	(No Guide)

Note

- This is the definition of Add to Countries.
- The highlighted channel or more than one selected channel is added to the Country category.

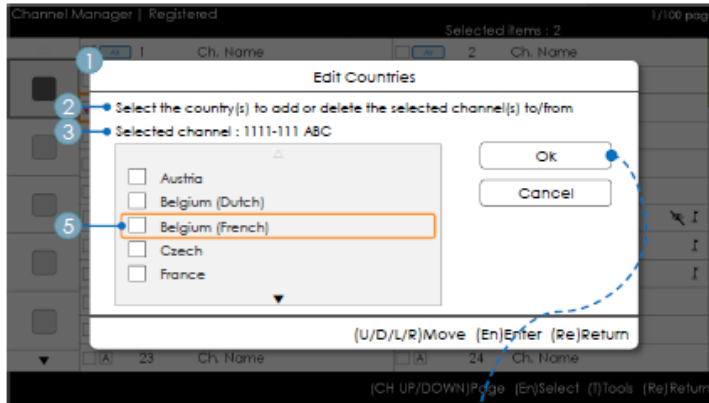
Etc.

- Timeout (60 sec)

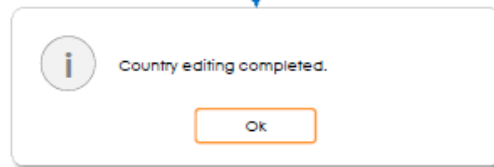
Elements

No	Name	Description
1	Add to Countries Window	<ul style="list-style-type: none"> If there are no channels that have been registered to the country list in the selected channels, "Add to Countries" is displayed as the title. A check box is displayed depending on whether the country that was selected when entering the screen is registered or not.
2	Guide	
3	Selection Info	<ul style="list-style-type: none"> The number of the selected channel or the channel name. The channel name is displayed when one channel has been selected: Selected channel: NNNN-NNN ABC The number of selected channels is displayed when more than one channel has been selected: Selected Channels : N
4	Complete Message	<ul style="list-style-type: none"> The message is displayed after the completion of the operation. (This message is always displayed if the OK button is selected.)
5	Selection Mark	<ul style="list-style-type: none"> How to identify the meaning of multiple channel selection marks <input checked="" type="checkbox"/> When all of the items have been registered. <input type="checkbox"/> When only part of the items have been registered. <input type="checkbox"/> When none of the items have been registered.

Add to Countries / Edit Countries (2/2)



- Channel Manager > Browser > Tools > Add to Countries



Key Guide

Button	Action	Nav. Help
ENTER	Selects the highlighted item.	Enter
RETURN	Cancels and returns to the previous screen (Tools).	Return
UP/DOWN	Moves the highlight over country items.	Move
LEFT/RIGHT	Moves the highlight.	Move
INFO	N/R	N/R
TOOLS	Closes the current window and displays the 'Tools' menu.	(No Guide)
EXIT	Cancels and returns to the previous step (Factory Mode).	(No Guide)

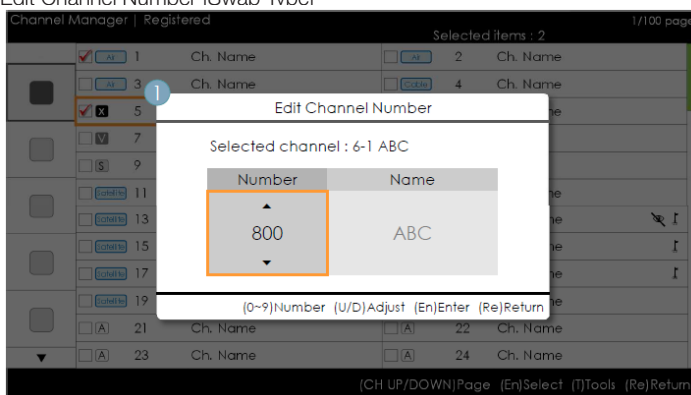
Notes

- This is the definition for Edit Countries.
- The highlighted channel item or more than one selected channel item is added or deleted from the Country category.
- Timeout (60 sec)

Elements

No	Name	Description
1	Add to Countries	<ul style="list-style-type: none"> • If there is a registered channel among the selected channels, Edit Countries is displayed as the title. • A check box is displayed depending on whether the selected country is registered or not.
2	Guide	
3	Complete Message	<ul style="list-style-type: none"> • The message is displayed after the completion of the operation. (This message is always displayed if the OK button is selected.)

Edit Channel Number (Swap Type)



- Channel Manager > Browser > Tools > Edit Channel Number

Key Guide

Button	Action	Nav. Help
ENTER	Applies the changes and closes the window.	Enter
RETURN	Cancels and returns to the previous screen (Tools).	Return
U/D	Changes the channel number of the selected channel.	Adjust
0-9	Enters a digit.	Number
INFO	N/R	N/R
TOOLS	Closes the current window and displays the 'Tools' menu.	(No Guide)
EXIT	Cancels and returns to the previous step (Factory Mode).	(No Guide)

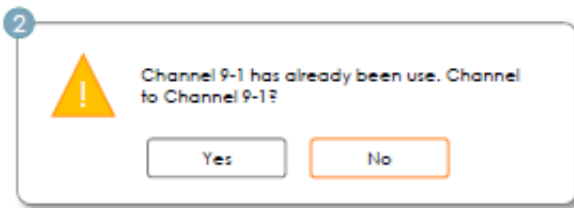
Notes

- This is the function that changes the channel number. (Swap Type)
- Channel numbers can be changed in all the channel lists and changes are applied to all the channels.
- If the new channel number has not been allocated to another channel, the channel number is updated to the new channel number and the list is sorted again in ascending order of channel number.
- If the new channel number has already been allocated to another channel, follow the Hotel specifications.

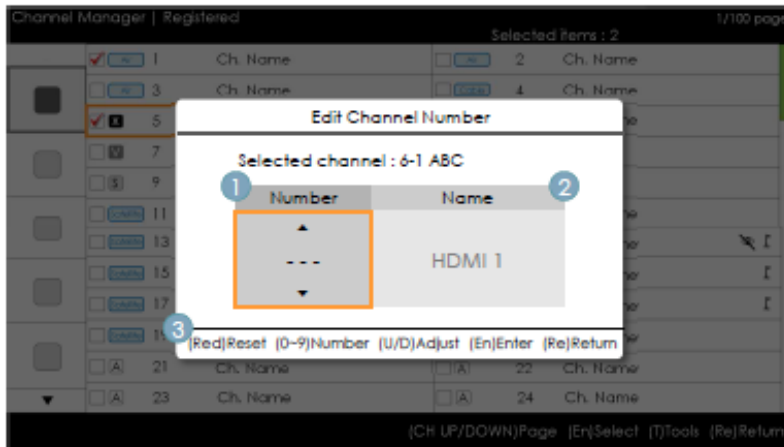
Etc. Vertical circulation is supported.

Elements

No	Name	Description
1	Edit Channel Number Window	<ul style="list-style-type: none"> Both the numeric keys and the Up/Down keys are supported. <ul style="list-style-type: none"> Selected Channel: Shows the currently selected channel name. Number: Shows the new channel number. (The currently allocated channel name is also displayed.) Name: Shows the currently allocated channel name. (If there are no channels, it is displayed as "(Empty)".) : If there is a channel but it does not have a name, the name is represented as "-----".
2	Warning Message	<ul style="list-style-type: none"> If an already allocated channel is selected <ul style="list-style-type: none"> If the new channel number has already been allocated to another channel, the confirmation message pops up. (Refer to the figure below.) If the user wants to change the channel number to one that has already been allocated to another channel, the channel numbers are swapped and saved.



Edit the Channel Number [External Input] (3/3)



- Channel Manager > Browser > Tools > Edit Channel Number

Key Guide

Button	Action	Nav. Help
RED	If a user presses the button, the channel number is initialized.	Reset
ENTER	Applies the changes and closes the window.	Enter
RETURN	Cancels or returns to the previous screen (Tools).	Return
U/D	Changes the channel number of the selected channel.	Adjust
0-9T	Enters a digit.	Number
INFO	N/R	N/R
TOOLS	Closes the current window and displays the 'Tools' menu.	(No Guide)
EXIT	Cancels and returns to the previous step (Factory Mode).	(No Guide)

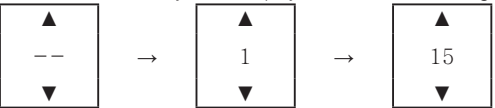
Notes

- This function allocates an external input source to a channel number. (The changes are applied to all the channels.)
- If the new channel number has already been allocated to another channel, follow the Hotel specifications.

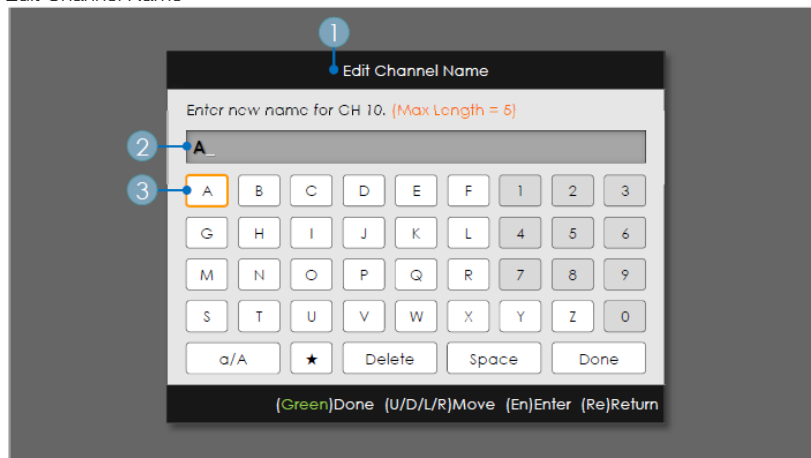
Etc.

- Default Highlight: Channel number area.
- Vertical circulation is supported.
- Timeout (60 sec)

Elements

No	Name	Description
1	Channel Number Area	<ul style="list-style-type: none"> • The channel number area. <ul style="list-style-type: none"> - Both the numeric keys and the Up/Down keys are supported. - If no value is allocated, as many '-' are displayed as the number of digits. 
2	Source Name	<ul style="list-style-type: none"> • External input name <ul style="list-style-type: none"> - <u>Items that cannot be configured are disabled.</u>
3	Nav. Help Area	<ul style="list-style-type: none"> • If a user presses the red button, the channel number is initialized.

Edit Channel Name



- Channel Manager > Browser > Tools > Edit Channel Name

Key Guide

Button	Action	Nav. Help
GREEN	Saves the changes and returns to the Channel Manager.	Done
ENTER	Saves the channel name and moves the cursor to the next field.	Enter
RETURN	Cancels and returns to the previous screen (Tools).	Return
U/D/L/R	Navigates on the keyboard.	Move
0-9	Enters a digit.	(No Guide)
INFO	N/R	N/R
TOOLS	Closes the current window and displays the 'Tools' menu.	(No Guide)
EXIT	Cancels and returns to the previous step (Factory Mode).	(No Guide)

Notes

- This is the definition of the keypad that is used for the Edit Channel Name function.

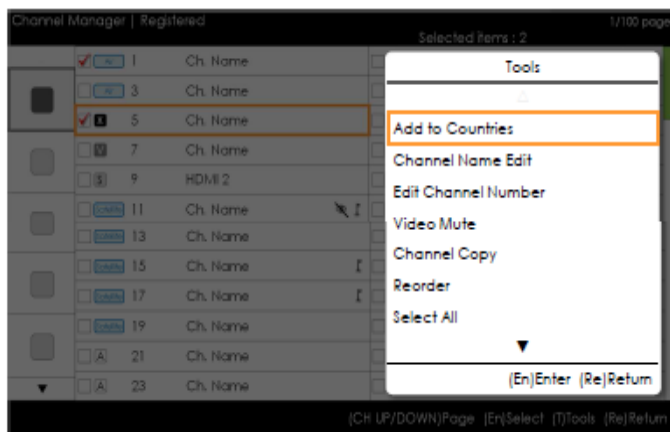
Etc.

- Timeout (60 sec)

Elements

No	Name	Description
1	Channel Name Edit Window	
2	Channel Name	<ul style="list-style-type: none"> • The cursor and the character that are currently being entered are in the same colour as the highlight. • When the maximum number of characters is reached, the cursor disappears.
3	Keyboard	<ul style="list-style-type: none"> • For a detailed scenario, refer to the keypad design document.

Tools (Edit Mode)

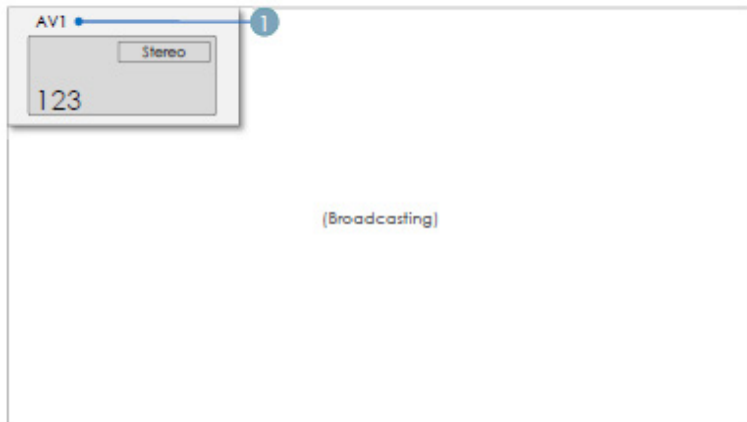


Edit Mode	
Content Highlight (when the number of the checked item is 0 or 1)	When there is more than one checked item.
Add to Countries	Add to Countries
Edit Countries (when an already-registered item is checked.)	Edit Countries (when an already-registered item is checked.)
Channel Name Edit	Video Mute
Edit Channel Number	Reorder (Satellite)
Video Mute	Select All
Channel Copy (Astra HD +)	Deselect All
Reorder (Satellite)	Delete
Select All	
Deselect All (this is only displayed when 1 or more items are selected)	
Delete	

Notes

- The position of the popup menu: The Tools menu for an item in the left column of the Channel List → This is displayed on the right. The Tools menu for an item in the right column of the Channel List → This is displayed on the left.
- If a user presses the Tools button when the highlighted item is not selected, the item is automatically marked as selected.
- For detailed specifications of each function, refer to the NEO Channel Manager.

CH Banner [when a channel number is allocated to an external input]



Notes

- The TV channel banner specifications are applied.
- When there is an unsupported item or there is no corresponding information, the item values are not displayed.
- The channel name is represented as the 'external input name'.

Elements

No	Name	Description
1	External Input Name	

The Channel List provides access to functions related to GenreTV.

- Country Mode
- Changes the genre mode.

Mixed Channel Map

Mixed Channel Map is a function to mix Air, Cable and Setellite channels.

[Except for Aus, Singapore, NZ models]

- Mixed channel Map should be ON in order to mix Air, Cable and Setellite channels.
- Use Channel Editor to sort the channels after turning on 'Mixed channel Map' in Hotel Option Menu.

Sound Bar

- **Samsung Sound-Bar & Hospitality TV**
 - Use Samsung Sound-Bar & hospitality TV support HDMI 1.4 to listen to TV sound on the Sound-Bar by using a single HDMI cable.
 - Supporting model.
 - Sound-Bar : HW-F350/F450/F550
- **Operation of "Hotel Mode" in Sound Bar**
 - The following items for the TV's hotel option menus should be set in advance.
 - Hotel option → Power On → Power ON Volume = "Enable" / Power ON Vol / Max Vol
 - Hotel option → External Device → Sound Bar Out = "On"
 - Connect an HDMI cable from the HDMI OUT port of Sound-BAR to the HDMI2 port of hospitality TV.
 - After being connected to the 2013 hospitality TV via HDMI Cable, when the TV turns on, the Sound-Bar automatically detects the TV and then, converts to "hotel mode" by itself.
 - The change with power-on volume & max volume on TV is applied to the connected sound-bar since TV boots twice.
- **Features of "Hotel Mode" in Sound Bar**
 - Synchronized power on/off with TV.
 - HDMI_CEC enabled.
 - Accessible "HDMI OUT" port only. (Other inputs are disabled)
 - Synchronizing "power-on"&"max" volume with the TV the Sound-Bar's volume is set at half of the TV.
 - Adjustable "power-on"&"max" volume acquired from the TV's hotel option menu. Sound-Bar volume=TV volume/2
 - Example: If the volume settings in TV are "power-on volume=20 and max volume=90", the sound bar will operates at volume=10, max volume=45.

*This function may differ depending on the model.

Security mode

Design Specifications

- This is to restrict some functions such as TTX and external source (**HDMI, USB**) input in specific facilities such as a correctional facility.
- The Security menu is password-protected. Access to the Security menu is denied without the password.
- Security Setting
 - The Security Setting can be set to ON or OFF.
 - The default is OFF.
 - Security Setting: If set to On, external source (**HDMI, USB**) input and the TTX function will be disabled.
- Password Setting
 - This allows users to change the password.
 - Users must input the current password, a new password, and confirmation of the new password.
- Password Reset
 - This is to reset the password.
 - The default password is "00000000".
 - Password Reset is visible only in the Factory menu by using the key combination of Info and Factory. It is not visible using the key combination of MUTE + 1 + 1 + 9 + ENTER.
- Security Setting: If set to On, the SIRCH function is not available.
- Factory Reset will not reset the Security Setting.

SIRCH

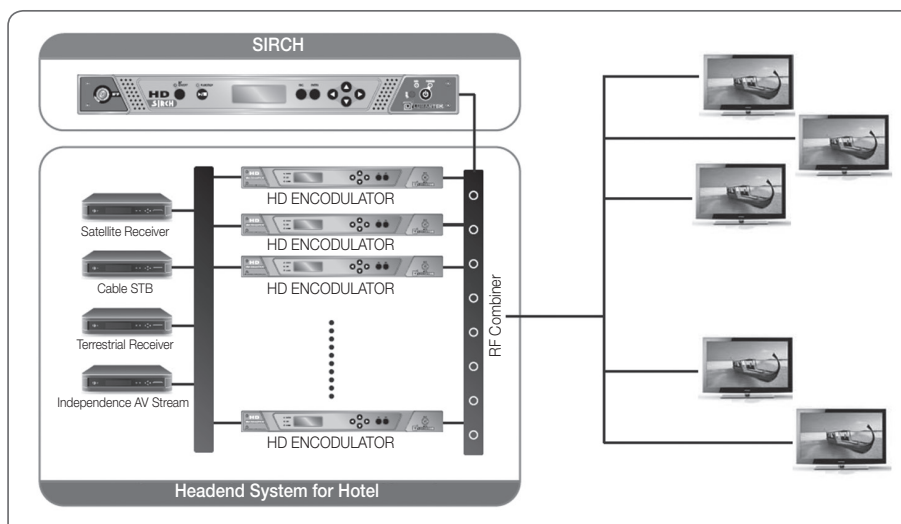
• Introduction

SIRCH (Samsung Interactive Remote Control for Hospitality) is a professional interactive remote controller for DTV that lets you deliver TV firmware updates, cloning data, and channel mapping changes to several hundred hospitality TVs simultaneously. Mounted at the broadcast head-end system in hotels, motels, resorts, hospitals, and apartment buildings, it delivers modulated RF control signals to hospitality sets in each guest room through coax cable.

SIRCH includes PC embedded systems and cable RF modulators which have DVB-C (Europe) and OpenCable (North America) RF output. It also has a 40GB Solid State hard drive, and a 100/1000 Base-T Ethernet port which lets you load TV firmware updates.

🔗 SIRCH is sold separately.

• System Block Diagram (eg. Headend System in Hotel)



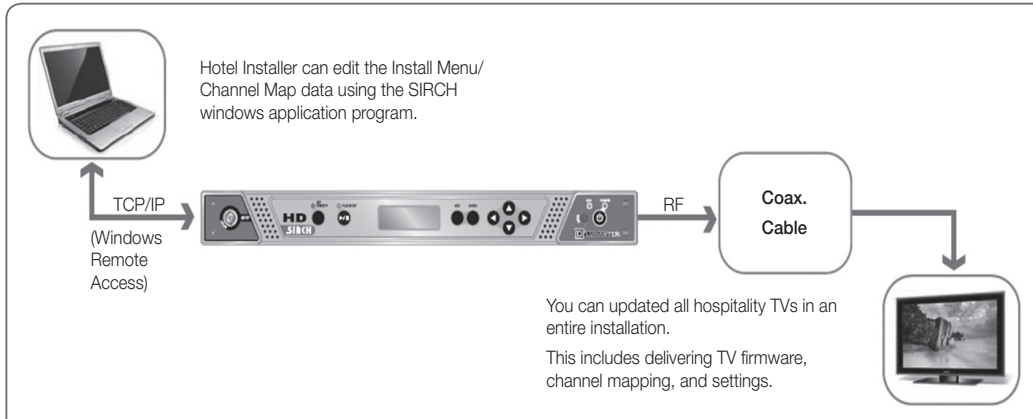
• Features

- SIRCH Windows Application SW
- 19 inch Rack Unit type, PC embedded Modulator : OpenCable.
- Remote Upgrade (TV Software, Cloning Data, Channel Map)
- Operation can be controlled by key button, extra key board, monitor, and mouse.
- Low Phase noise, High MER, 50~870MHz, +7 ~ -30dBm RF output.

• Cautions

- SIRCH can operate only in TV RF mode. (OpenCable QAM Modulation).
- You can install SIRCH only on TVs in stand-alone mode. Power On Source should be TV.
- SIRCH operates only when the SIRCH application version is higher than the TV's SIRCH version.
- You must check the SIRCH application version to ensure it is compatible with the TV firmware version.
- The SIRCH function is not supported for satellite channels.
(To use the SIRCH function in satellite models, make sure to set the Power On Channel to an Air or Cable channel.)

- **SIRCH operating Diagram**



- **SIRCH Installation Considerations**

There are a number of factors and operations you need to consider when you set up and run SIRCH:

1. Set the SIRCH Update Time

- Under normal conditions, use Standby SIRCH. Standby SIRCH updates TVs when they have been in Standby mode for a certain length of time or when they are in Standby mode at a certain time every day.
- You can set the standby SIRCH value to Off, 1Hour, 2Hour, 12:00 PM, 02:00 PM, 12:00 AM, or 02:00 AM.
- The default value is 1Hour.
- When you select "1Hour" or "2Hour", 1 or 2 hours after a TV goes into Standby mode, the SIRCH upgrade starts automatically.
- If you select a specific time setting, the Standby SIRCH is performed once a day at the defined time.

2. Set the SIRCH Channel

- Use SIRCH Channel to set the PID frequency that will carry the SIRCH parameters to the TVs in the system.
- Open Cable : You can use CH2 through CH135.
- A detailed frequency table is available in the SIRCH Windows Application Program User's Manual.

3. Verify the SIRCH Version

- The SIRCH version at the headend must be a higher version than the version on the TVs for the TVs to update.
- For example, if the software version in the SIRCH PC application is 01a0, then the current TV SIRCH version on a TV must be less than this for the TV to update.
- The software version value updates to a higher value automatically each time a change is implemented.
- The software version value for the TV clone data must be in hexadecimal format.

4. Test using Manual SIRCH

- Plan to use Manual SIRCH to test whether SIRCH has been installed properly.

NOTE

- Please visit www.lumantek.com/sirch/ for more information.
- SIRCH Windows Application Program User's Manual is available at <http://www.samsung.com/us/business/hospitality>.

GENERAL INFORMATION

- **System Overview**

The 'Samsung Interactive Remote Control for Hospitality (SIRCH)' application is a Remote Control Update system designed to provide better and more cost-effective service for Hospitality industries. This allows user/operators to configure the guest TV with RF distributing system. Using this helps the user to set and configure the guest room TV Set parameters. The created setting file will get used by SRCUS for configuration of guest TVs.

The Application is intended to create or modify clone files for user and to update guest TV with these clone files by transmitting them via RF. Using this provides a user interface similar in appearance to the TV's parameter settings where user the can update factory menu settings and modify or tune channels to update guest TVs.

To effectively complete and support the requirements of the "Hospitality" Industry, a management system is needed that will allow the operator to have control of the TV sets in the guest's room without requiring a potentially disruptive or costly visit to each room

- **Channel Configuration Made Easy All from the Head End FMA System.**
- **Will configure and deliver the channel line-up and SW upgrade to the guest room terminals via the hotel's coaxial distribution.**

This application is an S/W utility to configure user configuration parameter defined below:

- Hotel Factory Menu (Standalone Menu/Interactive Menu)
- Channel map

This also supports generation of a TS stream embedding clone file information and control of the modulator used for broadcast of the TS stream.

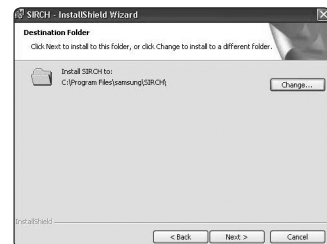
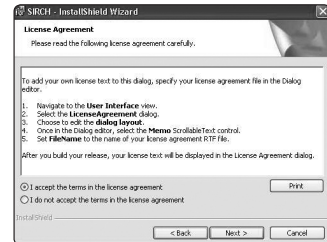
- **Purpose of the Document**

This document is prepared to facilitate and guide the user in creating/modifying clone files, to update interactive/standalone menu settings, to configure channel map and to create TS stream using SIRCH. Screens-wise explanations are provided here for the process flow.

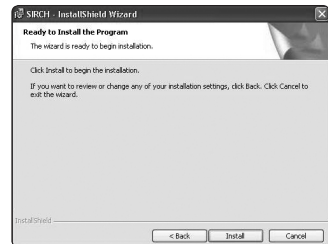
GETTING STARTED

• Installation instructions for Windows XP/Vista/2007

1. To install Samsung Interactive Remote Control for Hospitality (SIRCH), locate and open the setup directory of SIRCH and double-click on the file “setup.exe”.
2. Click on Next Button to proceed for Installation wizard of SIRCH.
3. Read the license agreement carefully and select “I accept the terms in the license agreement” and click on Next button.
4. Please enter User and Organization information and click on Next to proceed.
5. Click Next to install the application files to the default folder, or click Change to install to a different folder.



6. Choose the setup type (Complete / Custom) that best suits your needs. Complete is recommended for users as it will install all program features.
7. The wizard is ready to begin installation. Click on Install to begin the installation.

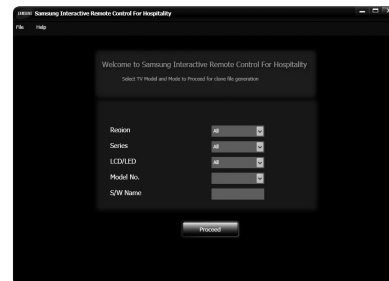


8. After installation process completes, Click Finish to exit the wizard.
9. After clicking on finish a desktop icon is made for launching SIRCH application and also it is added in your Start Menu → Programs.



- **Launching/Starting SIRCH Application**

1. To launch SIRCH, either user can double-click on the icon made on desktop named "SIRCH.exe" or user can go to Start Menu → Programs → Samsung → SIRCH → SIRCH.exe.
2. Application will launch a window asking to select Mode and Model to proceed.
3. User can choose options form File Menu to proceed to his specific application requirement.



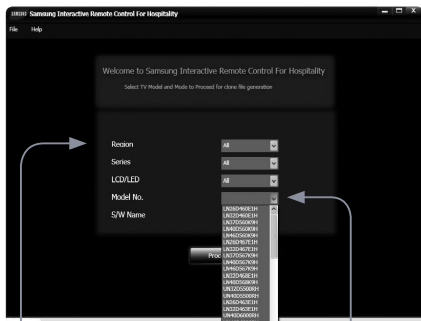
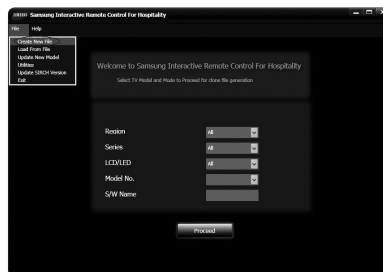
- **Uninstalling SIRCH Application**

1. To uninstall SIRCH go to StartMenu → Programs → Samsung → SIRCH → Uninstall.exe.
2. Follow the steps of uninstall wizard.

• **Create New Clone Files**

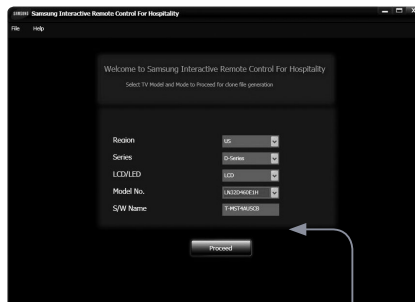
After launching SIRCH, the application shows a window asking for Model and Mode selection. The application starts with the utility to create new clone files thus other utilities can be called from File Menu. To create new files user may follow the following steps:

1. To create new file, either launch SIRCH.exe or choose Create New File from File Menu.
2. Select the series, region, LCD/LED type of the model from the drop down boxes.
If the user doesn't know the series, region or type of the model, select "All".
3. Selecting Region, Series and type will filter out the Models in Modelno. Dropdown box.
4. Select TV Model from the drop down box in front of "Model" Option.
5. After selecting Model no. S/w name of the model will shown in S/W name box.
6. Click the Proceed button.



Select Model's Series, Region, LCD/LED

Select TV Model

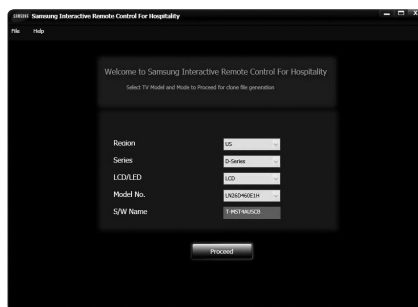


Software Name for selected TV Model appears

- **Modify existing Clone files**

To modify the existing clone files, the user must follow these steps:

1. Go to File Menu → Load from file. If the option is disabled user is probably on the next screen so he must come back to main screen by clicking back button.
2. After clicking on Load from file, a browser window opens asking the user to locate the clone file folder. The user must locate the immediate parent folder of the files not the folder named with version no.
3. After locating files click on **OK**.
4. Model no, Region, Series, Type and S/W name will be uploaded from clone files and are visible to the user. The user is not allowed to change them.
5. Click the Proceed button.
6. All Hospitality option menu settings and channels in the channel map are loaded from the files. Users can change them and can save them or overwrite them.



• Hospitality Options Setting

After clicking Proceed the application navigates users to another screen with different tabs: next screen with different tabs Hospitality Options, channel map and generate navigating to other Tabs does not lead to any loss of unsaved data.

To modify factory menu settings-users may follow these steps:

1. Select the Hospitality Options Tab.
2. The application shows Blue labels and drop down boxes in front of each labels which have their different values.
3. The user may select any value from the drop down box to change its parameters.
4. Default values selected are shown according to that particular TV Model's default settings, if the user doesn't make changes.
5. Dark and Dim labels cannot change and are disabled.
6. To set logo user can click on logo Download which will navigate him to a file browser window.
7. User should Click save button only when all settings are done, including Channel Map settings, because the save button generates Clone files.



Hospitality Option TAB

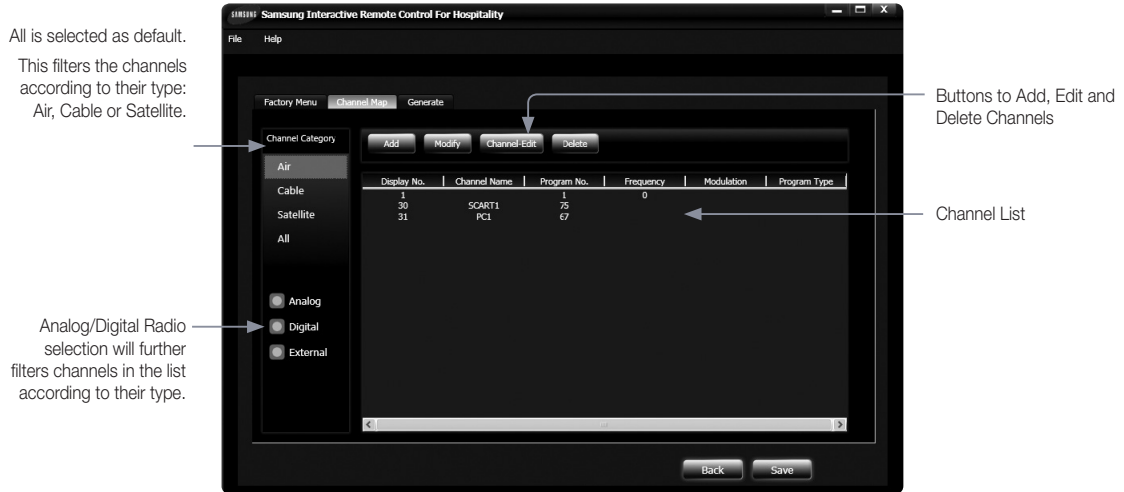
Drop Down Box to change default values

Disabled Parameters



- **Channel Map Configuration**

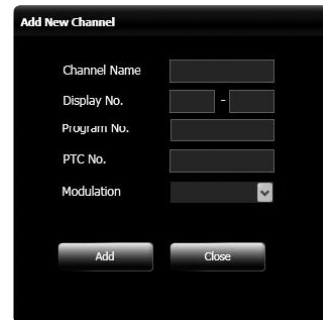
The Channel Map tab shows a list of channels in a table with every channel, channel name, PTC no., Program No., Modulation and Program Type shown. Channel map information is only configured for English. Channel names in any other language, in a clone file loaded from a TV, will remain undisturbed after changes resulting from the SIRCH application. The channel category is a list of options for Air, Cable, Satellite at the left of the table. All is selected as default, which shows every channel. By selecting Analog or Digital users can filter the channel list. Users can add new channels, edit existing channels or delete them by clicking the add, edit and delete buttons. Edit also shows complete information for a channel, information that can be modified by the user.



- **Add a New Channel**

To add a new channel, user must follow these steps:

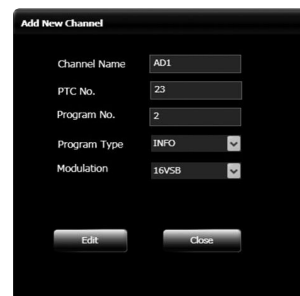
1. Select Air, Cable or Satellite to add a channel.
2. Select Analog or Digital.
3. Click the Add button. Application will pop up an Add New Channel Window.
4. Fill and complete the information fields. The information required varies by region.
5. Click Add to add the channel, or click Cancel.
(For DTV channels in ATSC models, the display number has two fields: and minor. These can be set to any values, from 0 to 999.)



- **Modifying an existing Channel from the list**

To modify parameters for an existing channel , including PTC number, program type, etc., follow these steps:

1. Select Air, Cable or Satellite.
2. Select Analog or Digital.
3. Select the channel from the list to Modify and click on Modify button.
4. Modify the respective fields.
5. Click Edit to modify the channel , or click Cancel
(For DTV channels in ATSC models, the display number has two fields: and minor. These can be set to any values, from 0 to 999.)



- **Deleting a Channel from the list**

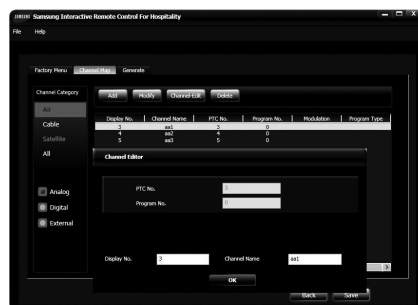
To delete an existing channel from the list user must follow the following steps:

1. Select Air, Cable or Satellite.
2. Select Analog or Digital.
3. Select a channel from the list click Delete.

- **Channel - Editor**

To change display no. or channel name, users must follow these steps:

1. Select Air, Cable or Satellite.
2. Select Analog or Digital.
3. Select the channel from the list to Edit and click Channel-Edit.
4. Change the display number. or the name of the channel. Click OK to edit the channel.
5. If a new display number. already exists, the application asks users to modify the display number.



- **Saving Clone Files**

To save the clone files with modified parameters and channel map configuration, user must follow these steps:

1. When finished changing data on the Interactive/Standalone menu and one the Channel map, click Save.
2. A browser window open, asking for the location to save the data. Select a folder where the files should be saved or create a new one. location to save the clone files.
3. After clicking Ok, files are saved in a folder named by the version no. of the model. User can find clone files inside (Location given by user) → (Model version number) → Clone.



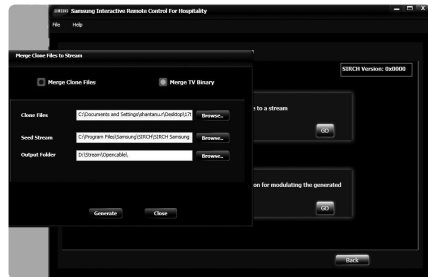
- **Going Back to Main Screen**

1. To go back to the main screen, click Back. This operation will not save parameter changes or the channel map configuration, so be sure to save clone files before going back and select a different model.

- **Merging with TS- Stream**

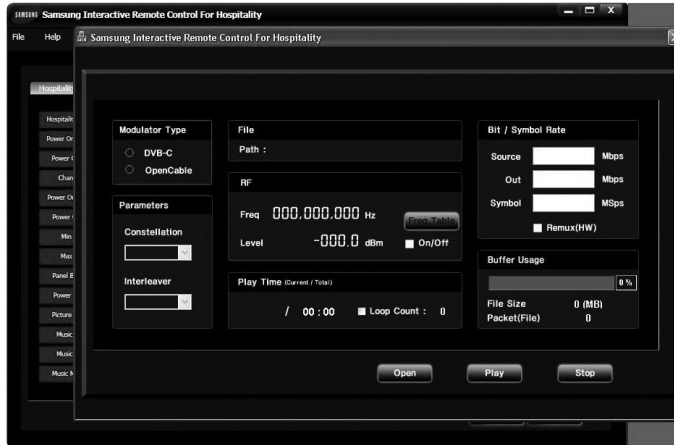
To merge clone files with the TS-stream follow these steps:

1. Go to File Menu → Utility → Generate and click on Launch TS-Merge.
2. Please read about Update version clauses [2.13] before merging.
3. Select Merge Clone files to clone files.
4. Browse the Clone files folder.
5. Browse the seed stream folder.
6. Click the generate button to generate the stream An output stream will be generated. It takes a few minutes to create the output stream.



- **Launching Ventus application**

Go to File Menu → Utility → Generate and click GO for Launch Ventus



- **Upgrading the clone or binary file on TV**

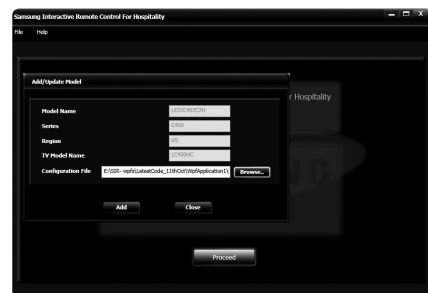
To upgrade the clone for binary file on the TV, use a prepared merged stream (Binary_outputstream.mpg or clone_outputstream.mpg).

1. Locate the stream file in the Modulator utility (as explained in 2.11).
2. Set the set channel to broadcast the stream by clicking on Frequency Table.
3. Select Opencable for ATSC or DVB-C for DVB models.
4. Click Play to broadcast the stream.
5. In TV's factory menu, the **SIRCH** channel must be same as the channel on which stream is broadcasting.
6. The SIRCH version must be earlier than the software version set before generating the stream file.
7. Click on Manual **SIRCH**. Please check taht the channel setup is set to Cable, not Air, if the cable is connected to TV for broadcasting.

- **Updating the application with new Model**

To update the application with a new model, to configure the clone files for that model, users must possess a model installation XML file. To update a new mode, follow these steps:

1. Go to File Menu → Update New Model.
2. A window (Add/Update Model) opens and asks users to enter the Configuration file (Model installation xml file). Click the Browse button to locate the model installation xml file.
3. After selecting the installation file, the window shows the model name, series, region and TV model name in extboxes.
4. To add model click the Add button. If a model already exists, application will update the model orl add the model in the model dropdown box.
5. To close the window click Close button.



- **Update SIRCH Version**

To update the **SIRCH** version for Clone and user should follows as below.

1. Go to File Menu → Update Software Version.
2. A window opens asking for the Software Version (Clone File Up gradation).
3. User should provide a higher version than the TV's current version in version value. E.g.
 - i) If software version is set as 01a0 in **SIRCH** PC application, then current TV **SIRCH** version should be less than this value for update.
4. Software version value for clone should in hexadecimal format e.g. fa1b but less than ffff.
5. After providing the value, click on Update update version value.



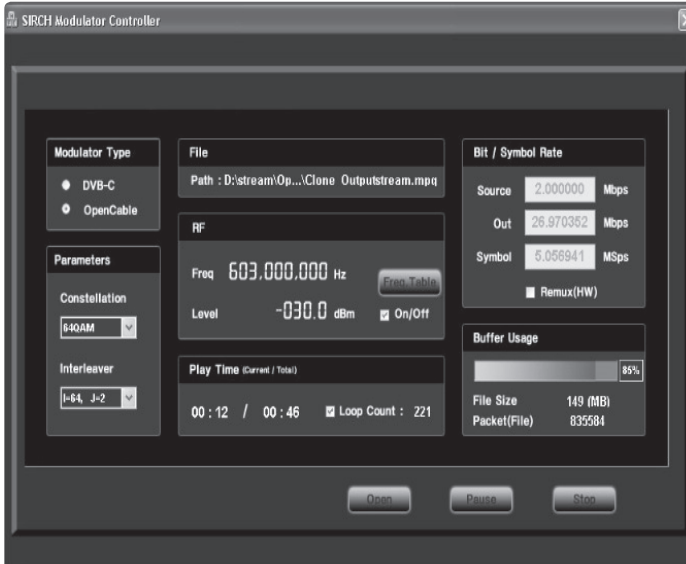
- **Closing the application**

1. To close the application, either click the close button on the top right or go File Menu and Exit.

- **FAQs**

If **SIRCH** has a problem, first review this list of possible problems and solutions.

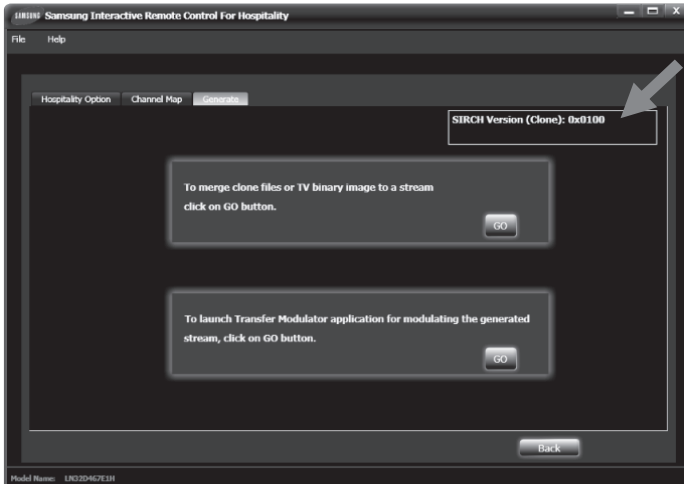
- Test SIRCH modulator controller settings:



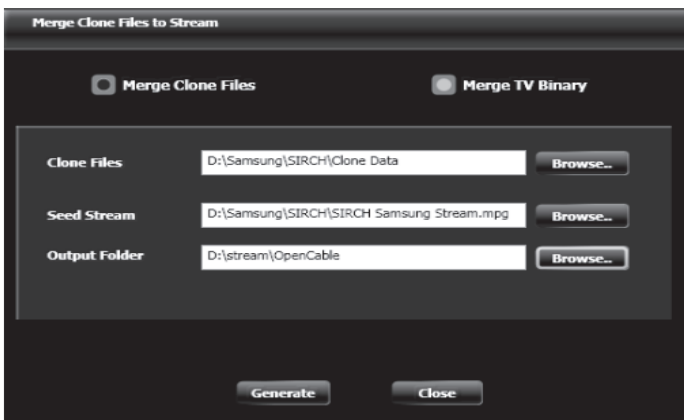
- The **SIRCH** upgrade only supports OpenCable & DVB-C
- Recommended settings:
 - Parameters Constellation: 64 QAM
 - Remux(H/W) : Off
- **SIRCH** Frequency should be matched to the SIRCH Channel of the TV.
 - If you change the frequency table, please refer to the frequency table in the SIRCH manual (Appendix A).
 - You should set same channel in both the **SIRCH** PC program and on the TV. For example. if you have an empty channel "2channel (57MHz)" in the Hotel, you should set 2channel(57MHz) for the **SIRCH** PC program and the TV.
 - Default initial value : **SIRCH** 87 (603MHz), TV **SIRCH** Channel : 87

- **Test version information while merging files into stream :**

- To merge clone files ensure while merging SIRCH clone version in SIRCH PC program should be greater than the SIRCH version stored in TV.
- To merge binary file ensure the binary merged into the stream has higher version than the binary already updated in TV.

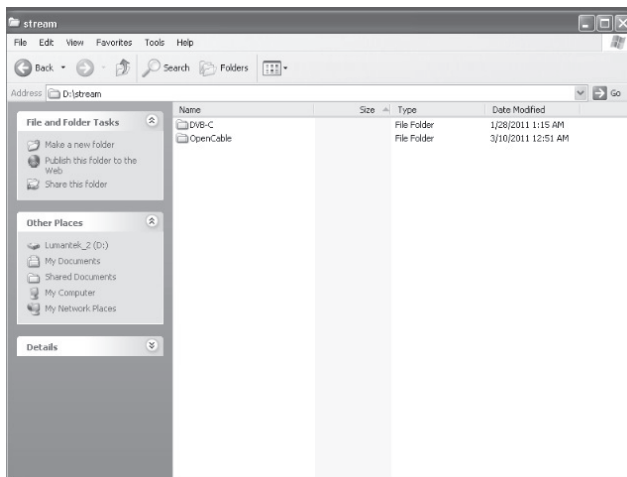


- TV SIRCH version should be less than SIRCH PC application value for update.
 - PC application: SIRCH Version (Clone): 0002, TV SIRCH Version: 0001. Update is possible. After update TV version will be set equal to SIRCH PC version, hence TV will be 0002.
 - PC application: SIRCH Version (Clone): 0002, TV SIRCH Version: 0002. Update is not possible.



- Merge TV Binary : support to upgrade Main SW.
 - You need to contact Samsung to use Merge TV Binary.
 - Merge TV Binary cannot upgrade Sub Micom

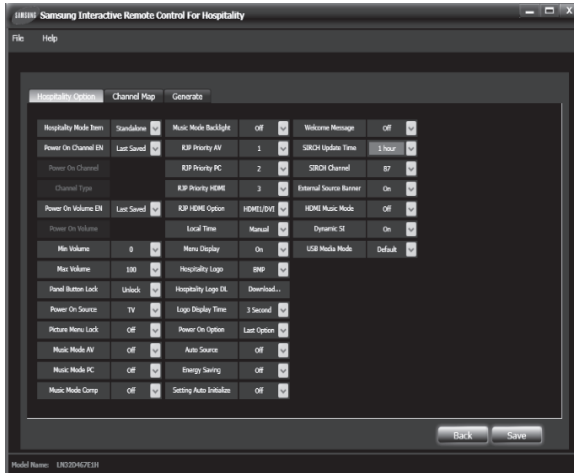
- Merged TS Stream should be located in D:\stream\OpenCable(US) or D:\stream\DVBC(EU)



- You can check the SIRCH merged stream if you tune to the SIRCH channel.



- **Cautions for Hospitality mode options**



- Hospitality Mode: should be Standalone. – Interactive mode cannot support SIRCH.
- Power On Source must be set to TV. If you select other external sources, SIRCH cannot support an upgrade.
- If you try to upgrade SIRCH in external source (PC/HDMI...), SIRCH could not support upgrade by manual SIRCH / SIRCH Update Time.
- SIRCH Upgrade Time: not off.
- Dynamic SI should be set to 'Off' to modify the DTV display channel map in channel map tap.

- **Which all TV broadcasting standards are supported by the SIRCH application?**

SIRCH application supports only ATSC and DVB .

- **How to add channels for DVB /ATSC?**

The user needs to select a particular TV region and model number. On basis of these parameters, the application adds channels for DVB (for EU) or ATSC (for US). Please refer section 2.7.

- **What all broadcasting type SIRCH Modulator supports?**

The SIRCH modulator supports only DVB-C (for DVB) and OpenCable (for ATSC) standards for broadcasting.

- **What is difference between Channel in the channel map and Channel configured in SIRCH modulator?**

- Channels in the Channel Map are used watch channels on TV. We can add more than one channel in the channel map. This is in form of clone data and transferred using the seed stream. On other hand Channels configured in the SIRCH modulator are used for broadcast data (clone or binary) from the modulator with fixed frequency or channel numbers. This same channel number is used on the TV named the SIRCH channel for software update. (Please refer Appendix A).

Installing the Wall Mount

The wall mount kit (sold separately) allows you to mount the TV on the wall. For detailed information on installing the wall mount, see the instructions provided with the wall mount. Contact a technician for assistance when installing the wall mount bracket. We do not advise you to do it yourself.

Samsung Electronics is not responsible for any damage to the product or injury to yourself or others if you select to install the TV on your own.

Wall Mount Kit Specifications (VESA)

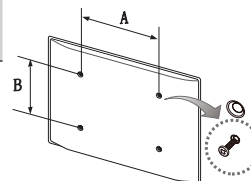
The Wall mount kit is not supplied but sold separately.

Install your wall mount on a solid wall, perpendicular to the floor. When attaching to other building materials, please contact your nearest dealer. If installing on a ceiling or slanted wall, it may fall and result in severe personal injury.

NOTE

- Standard dimensions for wall mount kits are shown in the table below.
- When purchasing our wall mount kit, a detailed installation manual and all parts necessary for assembly are provided.
- Do not use screws that do not comply with VESA standard screw specifications.
- Do not use screws longer than the standard dimensions, as they may cause damage to the inside of the TV set.
- For wall mounts that do not comply with the VESA standard screw specifications, the length of the screws may differ depending on their specifications.
- Do not fasten the screws too tightly. This may... damage the product or cause the product to fall, leading to personal injury. Samsung is not liable for these kinds of accidents.
- Samsung is not liable for product damage or personal injury when a non-VESA or non-specified wall mount is used or the consumer fails to follow the product installation instructions.
- Do not exceed a 15 degrees tilt when mounting this TV.

inches	VESA Spec. (A * B)	Standard Screw	Quantity
28	100 x 100	M4	4
32~40	200 X 200	M8	
48~55	400 X 400		



Do not install your Wall Mount Kit while your TV is turned on. It may result in personal injury due to electric shock.

Securing the TV to the Wall



Caution: Pulling, pushing, or climbing onto the TV may cause the TV to fall. In particular, ensure that your children do not hang over or destabilize the TV; doing so may cause the TV to tip over, resulting in serious injuries or death. Follow all safety precautions provided on the included Safety Flyer. For added stability, install the anti-fall device for safety purposes, as follows.



To avoid the TV from falling

1. Put the screws into the clamps and firmly fasten them onto the wall. Confirm that the screws have been firmly installed onto the wall.
 - ✎ You may need additional material, such as an anchor, depending on the type of wall.
 - ✎ Since the necessary clamps, screws, and string are not supplied, please purchase these additionally.
2. Remove the screws from the centre back of the TV, put the screws into the clamps, and then fasten the screws onto the TV again.
 - ✎ Screws may not be supplied with the product. In this case, please purchase the screws of the following specifications.
3. Connect the clamps fixed onto the TV and the clamps fixed onto the wall with a strong string and then tie the string tightly.
 - ✎ **NOTE**
 - Install the TV near to the wall so that it does not fall backwards.
 - It is safe to connect the string so that the clamps fixed on the wall are equal to or lower than the clamps fixed on the TV.
 - Untie the string before moving the TV.
4. Verify that all connections are properly secured. Periodically check connections for any sign of fatigue for failure. If you have any doubt about the security of your connections, contact a professional installer.

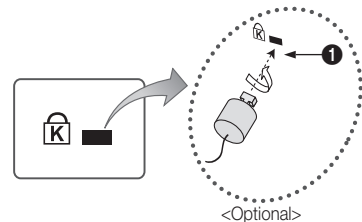
Anti-theft Kensington Lock

The Kensington Lock is not supplied by Samsung. It is a device used to physically fix the system when using it in a public place. The appearance and locking method may differ from the illustration, depending on the manufacturer. Refer to the manual provided with the Kensington Lock for additional information on proper use.

To lock the product, follow these steps:

Please find the “” icon on the rear of the TV. A kensington slot is beside the “” icon.

1. Wrap the Kensington lock cable around a large, stationary object such as desk or chair.
 2. Slide the end of the cable with the lock attached through the looped end of the Kensington lock cable.
 3. Insert the locking device into the Kensington slot on the product (❶).
 4. Lock the lock.
- ✎ These are general instructions. For exact instructions, see the User manual supplied with the locking device.
 - ✎ The locking device has to be purchased separately.
 - ✎ The location of the Kensington Lock may be different depending on the model.



Specifications

Environmental Considerations	50°F to 104°F (10°C to 40°C)		
Operating Temperature	10% to 80%, non-condensing		
Operating Humidity	-4°F to 113°F (-20°C to 45°C)		
Storage Temperature	5% to 95%, non-condensing		
Storage Humidity			
Model Name	HG28EC690	HG32EC690	HG40EC690
Display Resolution	1366 x 768	1920 x 1080	
Stand Swivel (Left / Right)	0°	20° / 60° / 90°	
Screen Size (Diagonal)	28 inches	32 inches	40 inches
Sound (Output)	5W x 2	10W x 2	
Dimensions (WxDxH)			
Body	643.4 x 62.9 x 396.5 mm	721.4 x 64.9 x 428.5 mm	906.6 x 65.1 x 532.9 mm
With stand	643.4 x 163.4 x 435.1 mm	721.4 x 192.6 x 465.6 mm	906.6 x 226.5 x 577.6 mm
Weight			
Without Stand	3.7 kg	5.0 kg	7.8 kg
With Stand	4.1 kg	6.4 kg	10.7 kg
Model Name	HG48EC690		HG55EC690
Display Resolution	1920 x 1080		
Stand Swivel (Left / Right)	20° / 60° / 90°		
Screen Size (Diagonal)	48 inches		55 inches
Sound (Output)	10W x 2		
Dimensions (WxDxH)			
Body	1075.1 x 65.5 x 627.6 mm		1230.6 x 64.0 x 718.4 mm
With stand	1075.1 x 226.5 x 673.5 mm		1230.6 x 226.5 x 762.8 mm
Weight			
Without Stand	11.1 kg		15.7 kg
With Stand	14.0 kg		18.6 kg

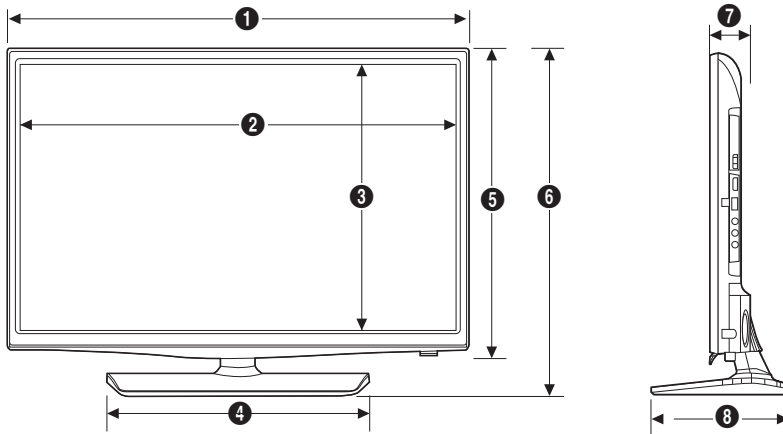
 Design and specifications are subject to change without prior notice.

 For power supply and power consumption information, refer to the label attached to the product.

Dimensions

▪ Front view / Side view

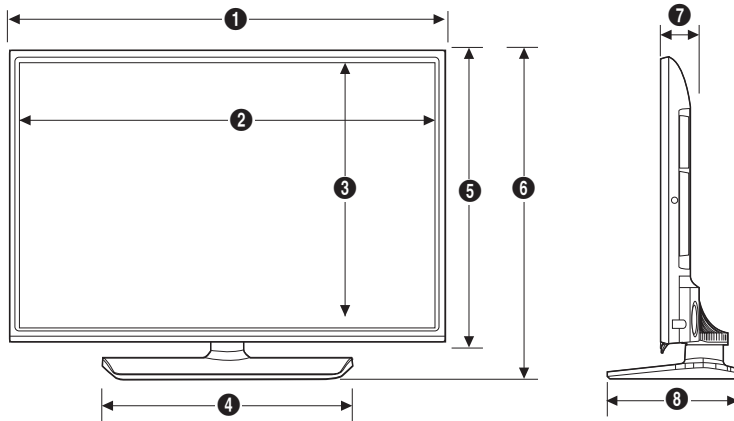
HG28EC690



(Unit: mm)

	1	2	3	4	5	6	7	8
HG28EC690	643.4	609.5	347.0	311.4	396.5	435.1	62.9	163.4

HG32EC690 / HG40EC690 / HG48EC690 / HG55EC690

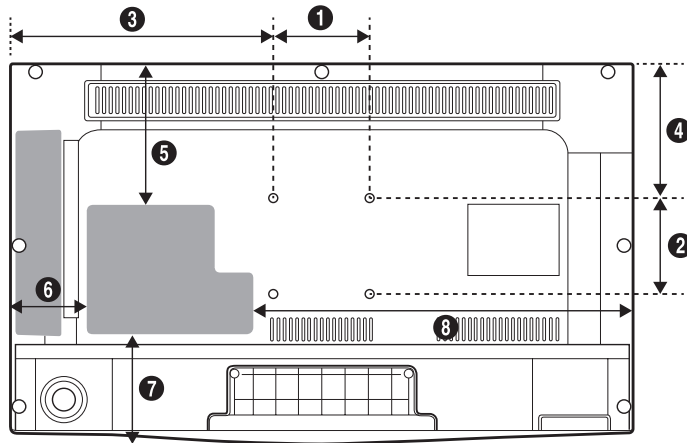


(Unit: mm)

	1	2	3	4	5	6	7	8
HG32EC690	721.4	700.4	394.8	450.8	428.5	465.6	49.1	192.6
HG40EC690	906.6	887.6	500.2	556.5	532.9	577.6	49.3	226.5
HG48EC690	1075.1	1056.1	594.9	556.5	627.6	673.5	49.7	226.5
HG55EC690	1230.6	1209.6	680.4	556.5	718.4	762.8	64.0	226.5

▪ Jack panel detail / Rear view

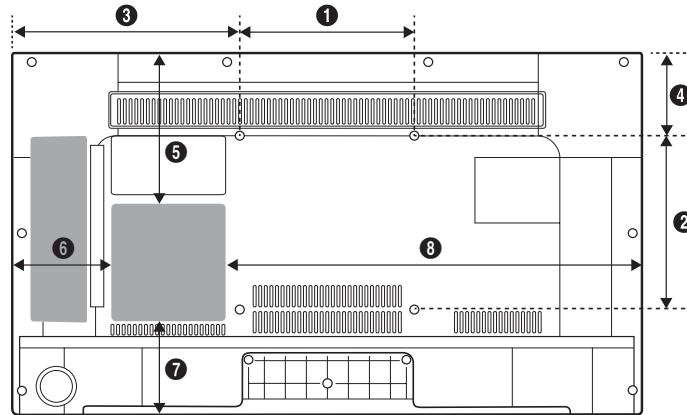
HG28EC690



(Unit: mm)

	1	2	3	4	5	6	7	8
HG28EC690	100	100	271.7	140.5	147.3	78.7	113.5	392.4

HG32EC690 / HG40EC690 / HG48EC690 / HG55EC690



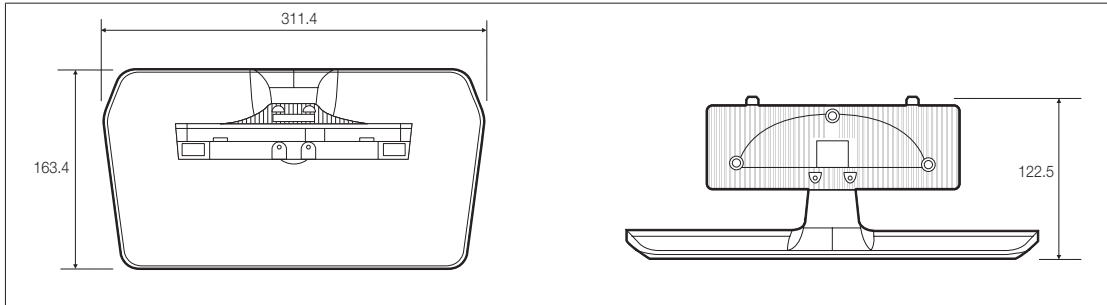
(Unit: mm)

	1	2	3	4	5	6	7	8
HG32EC690	200	200	260.2	95.9	176.5	114.2	110.5	477.7
HG40EC690	200	200	352.8	124.0	195.4	156.3	196.9	620.8
HG48EC690	400	400	337.0	73.6	262.8	177.5	223.3	768
HG55EC690	400	400	414.8	150.2	336.0	228.2	238.1	872.8

▪ Base Stand detail

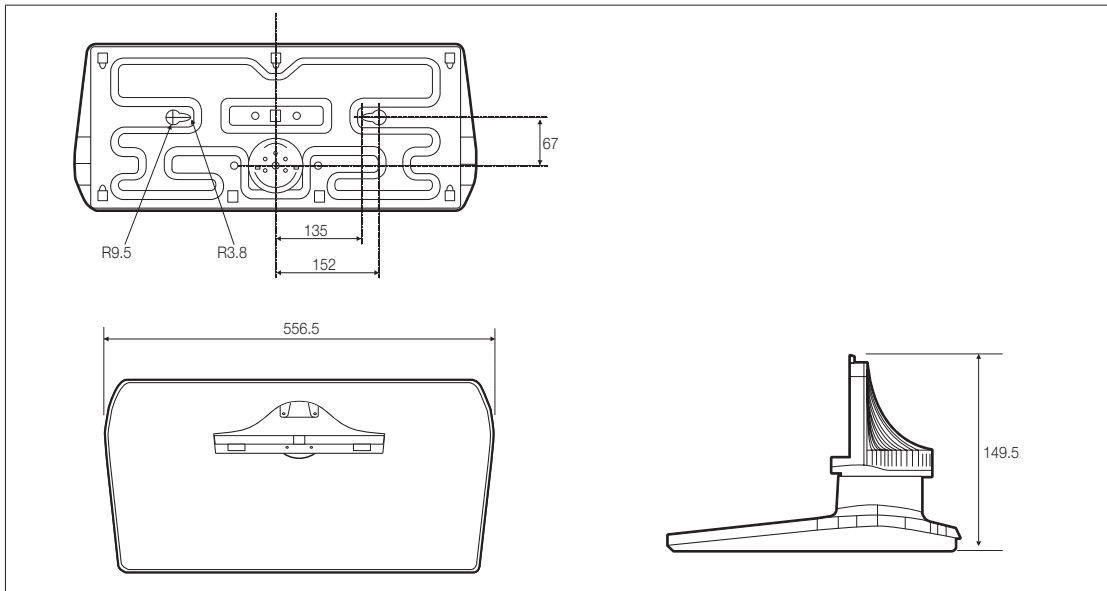
HG28EC690 / HG32EC690

(Unit: mm)



HG40EC690 / HG48EC690 / HG55EC690

(Unit: mm)



NOTE: All drawings are not necessarily to scale. Some dimensions are subject to change without prior notice. Refer to the dimensions prior to performing installation of your TV. Not responsible for typographical or printed errors.



Contact SAMSUNG WORLDWIDE

If you have any questions or comments relating to Samsung products, please contact the SAMSUNG customer care center.

Country	Customer Care Centre ☎	Web Site
AUSTRIA	0810 - SAMSUNG (7267864, € 0.07/min)	www.samsung.com
BELGIUM	02-201-24-18	www.samsung.com/be (Dutch) www.samsung.com/be_fr (French)
BOSNIA	051 331 999	www.samsung.com
BULGARIA	07001 33 11 , share cost tariff	www.samsung.com/bg
CROATIA	062 SAMSUNG (062 726 786)	www.samsung.com/hr
CZECH	800 - SAMSUNG (800-726786) Samsung Electronics Czech and Slovak, s.r.o. V Parku 2343/24, 148 00 - Praha 4	www.samsung.com
DENMARK	70 70 19 70	www.samsung.com
FINLAND	030-6227 515	www.samsung.com
FRANCE	01 48 63 00 00	www.samsung.com/fr
GERMANY	0180 6 SAMSUNG bzw. 0180 6 7267864* (*0,20 €/Anruf aus dem dt. Festnetz, aus dem Mobilfunk max. 0,60 €/Anruf)	www.samsung.com
CYPRUS	8009 4000 only from landline	www.samsung.com/gr
GREECE	80111-SAMSUNG (80111 726 7864) only from land line (+30) 210 6897691 from mobile and land line	www.samsung.com/gr
HUNGARY	06-80-SAMSUNG (726-7864)	http://www.samsung.com/hu
ITALIA	800-SAMSUNG (726-7864)	www.samsung.com
LUXEMBURG	261 03 710	www.samsung.com
MONTENEGRO	020 405 888	www.samsung.com
NETHERLANDS	0900-SAMSUNG (0900-7267864) (€ 0,10/Min)	www.samsung.com
NORWAY	815 56480	www.samsung.com
POLAND	0 801-172-678* lub +48 22 607-93-33 ** *(całkowity koszt połączenia jak za 1 impuls według taryfy operatora) ** (koszt połączenia według taryfy operatora)	www.samsung.com/pl
PORTUGAL	808 20-SAMSUNG (808 20 7267)	www.samsung.com
ROMANIA	08008 SAMSUNG (08008 726 7864) TOLL FREE No.	www.samsung.com/ro
SERBIA	011 321 6899	www.samsung.com/rs
SLOVAKIA	0800 - SAMSUNG (0800-726 786)	www.samsung.com
SPAIN	902172678	www.samsung.com
SWEDEN	0771 726 7864 (SAMSUNG)	www.samsung.com
SWITZERLAND	0848 - SAMSUNG(7267864, CHF 0.08/min)	www.samsung.com/ch (German) www.samsung.com/ch_fr (French)
U.K	0330 SAMSUNG (7267864)	www.samsung.com
EIRE	0818 717100	www.samsung.com
LITHUANIA	8-800-77777	www.samsung.com/lt
LATVIA	8000-7267	www.samsung.com/lv
ESTONIA	800-7267	www.samsung.com/ee
TURKEY	444 77 11	www.samsung.com