

POWER TO YOUR NEXT STEP

A DSLR you'll
never want to
leave behind



EOS 100D



you can

Canon

A DSLR you'll never want to leave behind

Keep a record of your memories with great quality photos and video that you'll be proud of. Vibrant 18-megapixel images look as good in print as they do on screen, and can be cropped and edited on your home computer for the perfect result.





The DSLR you can take everywhere

Shoot better photography more often with a DSLR that is small enough to take everywhere. Responsive performance, an optical viewfinder, and access to the EOS System of lenses and accessories make the EOS 100D a camera without compromise

Great photography made easy

Be spontaneous and enjoy your photography. The EOS 100D is quick and simple to use, from its touch screen interface to its Scene Intelligent Auto mode, which picks the best settings individually for each picture as you compose it.

Tv (Shutter Speed): 1/400 sec

Av (Aperture Value): f/5.0

ISO Speed: 100

Lens: EF-S 18-55mm f/3.5-5.6 IS STM

Focal length: 18.0mm

A fast shutter speed was used to freeze the moment.



Capturing the detail in your life

Photos from the EOS 100D are colourful, atmospheric and highly detailed. An 18-megapixel Hybrid CMOS AF II Sensor delivers images that can be printed at large sizes or cropped to reveal new compositions and angles.

DiGiC
5

DIGIC 5 processing

Canon's DIGIC 5 image processor controls all of the functions of the EOS 100D, including turning image data from the camera's sensor into great-looking image files on your memory card and allowing continuous shooting at 4 fps.

Photos from the DIGIC 5 processor are characterised by their smooth gradation, vibrant colours and natural skin tones.

ISO

12800
6400

High-ISO, low light photography

Capture the atmosphere of an occasion, shooting spontaneously even in low light conditions. An ISO 100-12800 sensitivity range (extendable to the equivalent of ISO 25600) enables shutter speeds to be used that are fast enough to eliminate camera shake – the motion blur produced by accidentally moving the camera while taking a picture.

The camera's DIGIC 5 processor helps to minimise digital noise at high ISO settings, maximising image quality and giving you atmospheric pictures you'll love.

Tv (Shutter Speed): 1/50 sec

Av (Aperture Value): f/22.0

ISO Speed: 200

Lens: EF-S 17-55mm f/2.8 IS USM

Focal length: 28.0mm

A wide angle lens and small aperture was used to pick out every detail of the scene.



Small in size, big on design

Enjoy the quality, functionality and responsiveness of a DSLR in a body that's small enough to take everywhere and anywhere – a tool with which to document your life.

Tv (Shutter Speed): 1/160 sec

Av (Aperture Value): f/4.0

ISO Speed: 400

Lens: EF-S 10-22mm f/3.5-4.5 USM

Focal length: 15.0mm

FULL
HD

Photograph your lifestyle

From a child's first school play to your parents' wedding anniversary, the EOS 100D captures the atmosphere of any occasion, producing superb quality photos and Full-HD movies. It's a camera you can take with you everywhere, weighing just 407g* and measuring 116.8 x 90.7 x 69.4mm. A perfect balance between portability and functionality.

9^{point}
AF

Responsive handling and an optical viewfinder

Capture the decisive moment with quick responsive handling that's typical of a DSLR. A bright optical viewfinder lets you follow the action, and makes it easier to compose pictures in very bright and very dark conditions.

A phase-detection autofocus system comprises nine-points spread over the frame in a wide-area pattern that provides quick and accurate focusing even with off-centre subjects. A central 'cross-type' focusing point provides improved performance in difficult conditions.

**CIPA standard
(including battery and memory card)*



The EOS 100D is
25% smaller than
the EOS 650D



First steps in photography

Great photography doesn't have to be difficult. The intuitive touch screen interface and intelligent shooting modes of the EOS 100D makes shooting quick, easy and enjoyable.



Scene Intelligent Auto

Scene Intelligent Auto

When you compose a picture with the EOS 100D in Scene Intelligent Auto mode, the camera analyses the subject too, monitoring lighting conditions, colour and contrast. Even distance information from the camera's focusing system is taken into account, as is the presence of movement and faces, in Live View mode.

The result: great-looking photography made easy. Colour accuracy helps reproduce skin tones naturally and shooting with the most appropriate aperture, shutter speed and ISO sensitivity ensures stunning results every time.

Scene Intelligent Auto gives you the confidence to be creative. Compose and shoot any scene knowing that each and every camera setting has been carefully considered and chosen for you.



Scene Intelligent Auto:
Portrait



Scene Intelligent Auto:
Sunset



Scene Intelligent Auto:
Macro

● Special
● Scene
● Mode

Scene Modes

When you are ready to have more creative input into your photography, take your next step with one of the EOS 100D's Scene Modes. There are eight Scene modes, each of which is tailored towards a different type of subject. Choose from Portrait, Landscape, Close-up, Sports, Night Portrait, Handheld Night Scene, Kids, Food or Candlelight.



Kids Scene Mode

Uses the EOS 100D's built-in flash to ensure sharp, well-exposed pictures of fast-moving children having fun.



Food Scene Mode

Brings out the best in any dish, optimising colours and setting up the camera for close-up photography.



Candlelight Scene Mode

Reproduces the distinctive warm glow of candlelight by carefully managing the EOS 100D's white-balance settings.

Shooting in difficult conditions

Select Handheld Night Scene Mode to shoot at night without using a tripod or flash. The EOS 100D will record four frames using shutter speeds fast enough to avoid camera shake, and combine them to form a single stunning image.

HDR Backlight Control helps in high-contrast conditions, where a normal photograph would be either too bright or too dark. The EOS 100D captures three frames at different exposures and combines them to produce a single well-exposed picture - great for back-lit portraits.

And when you are ready to learn more about photography, the EOS 100D also features manual and semi-automatic shooting modes that let you take more control over the picture-taking process.

Tv (Shutter Speed): 1/500 sec

Av (Aperture Value): f/4.0

ISO Speed: 400

Lens: EF-S 10-22mm f/3.5-4.5 USM

Focal length: 15.0mm

Scene Intelligent Auto optimised the colours of the scene to make the sunset more vivid.

Taking your next creative steps

Use the EOS 100D's Creative Auto shooting mode and eight Creative filter options to make an image your own. It's easy to capture a scene on camera exactly as you want, and let your creative side enjoy itself.

Creative Filter:
Miniature



Creative Filter:
Soft Focus



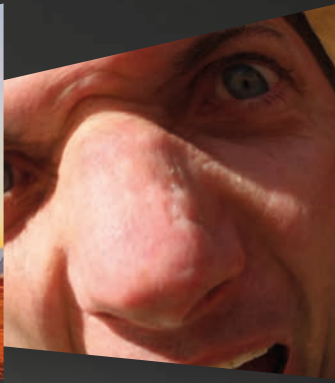
Creative Filter:
Water Painting



Ambience effect



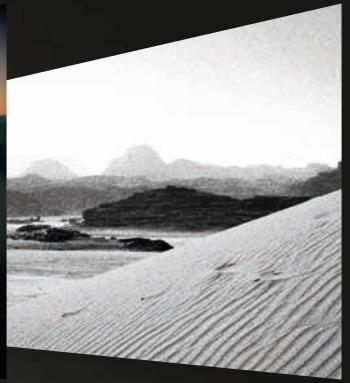
Creative Filter:
Art Bold



Creative Filter:
Fish-Eye



Creative Filter:
Toy Camera



Creative Filter:
Grainy Black & White



Creative Filters

Creative Auto mode

Graduate from Scene Intelligent Auto, or subject-based Scene modes, to Creative Auto and enjoy a new level of artistic input into your photography.

Control background blur, image brightness, drive mode (single/continuous), Picture Style and more, all via an intuitive user interface that doesn't require you to get bogged down in complicated technical details. The effect of all of these changes can be seen on the camera's Clear View II LCD screen when composing in Live View mode, giving instant feedback on what the captured photo will look like.

Creative Filters

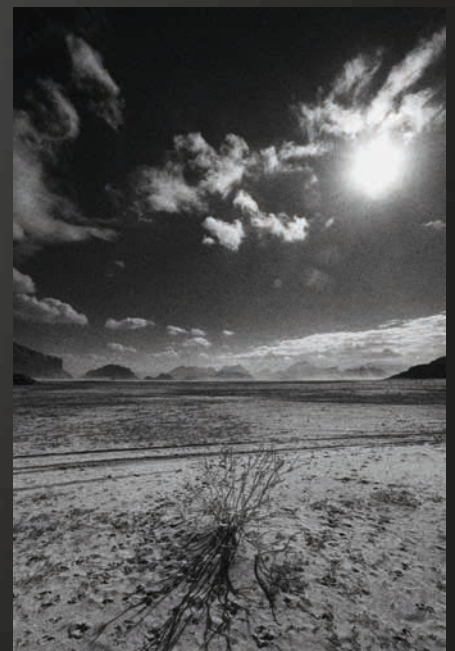
Apply your own unique style to images shot on the EOS 100D using its eight Creative filters. Choose from Grainy Black & White, Soft Focus, Fish-eye effect, Art Bold effect, Water Painting effect, Toy Camera effect and Miniature effect, and even combine filters for a truly unique approach.

Extra Effect Shot

In Creative Auto shooting mode, Canon's Extra Effect Shot technology encourages experimentation, enabling two images to be captured simultaneously – one with Ambience effects, Picture Styles and Filter effects applied; the other unfiltered and natural. The EOS 100D also offers the ability to preview Creative Filter effects as you compose, using Live View mode.



Without Creative Filter: Monochrome



With Creative Filter: Monochrome

EOS Movies



Record your memories with Full-HD video, enjoying outstanding low light performance and as much or as little creative control as you like.

The features that make the EOS 100D great for still photography also make it superb for shooting video. The Full-HD picture looks fantastic on your TV and your home computer, and digital sound gives your movies the soundtrack they deserve.

The relatively large size of the EOS 100D's sensor allows for shallow depth of field effects while capturing video, and the camera's ISO 100-12800 sensitivity means that you can capture stunning footage in low light conditions.



Video Snapshot

Shoot video as easily and spontaneously as you would a still photo. Video Snapshot records fixed-length movie clips of 2, 4, or 8 sec and combines them into a single movie file that can be played back in camera or on your home computer. By keeping the clips relatively short the final footage has a faster, more dynamic feel to it – no complicated editing software required.

View the EOS 100D sample video at the following link:
canon-europe.com/EOS_100D





3:2
WIDE
7.7cm / 3.0" LCD
ClearView II

Touch screen controls

A 7.7cm (3.0") Clear View II Touch Screen – similar in operation to that found in a smartphone – provides access to the camera's menu functions and allows still photo shooting with a single tap. Photographers can also browse images on the camera's memory card using intuitive swipe and pinch gestures.





Welcome to the EOS System

▮ The EOS System is about more than just digital cameras. It's a collection of lenses, Speedlite flashes, accessories and software that provides a complete imaging solution – from capture to output.

EF
Lenses



Wildlife / Long Lens Shooting

EF-S 55-250mm f/4-5.6 IS II

Isolate details within a scene or pull distant objects closer to the camera, and let Image Stabilizer technology reduce the risk of camera shake.



Macro

EF-S 60mm f/2.8 Macro USM

Get close to your subject for an alternative view. Focus to within 20cm and fill your frame with stunning detail.



Picture Style Editor

Image Browser EX

Digital Photo Professional and EOS Solution software

Supplied with every Canon EOS camera, Digital Photo Professional (DPP) is professional imaging software for viewing, editing and processing RAW and JPEG files. Its intuitive interface allows photographers to adjust images for exposure, colour saturation and contrast as well as apply settings such as white balance and sharpening retrospectively.

Also included on the EOS Solution disk are other applications that add new functionality to your EOS camera. ImageBrowser EX (Mac and PC) offers simple download and image browsing, while EOS Utility provides remote and tethered shooting facilities. Picture Style Editor lets photographers create and edit their own picture styles and upload them to their cameras.



PIXMA MG8250 A4 Photo Printer



EOS 100D

Canon Photographic Printing

Canon's range of PIXMA inkjet printers allow EOS photographers to make fine-art quality prints at home. Tiny ink-droplet sizes deliver remarkable image quality and phenomenal levels of detail in borderless print up to A3+ in size. Canon SELPHY dye-sublimation printers offer the speed and affordability of a high-street minilab in a compact, easy-to-use form.

To find out more go to:
www.canon-europe.com/PIXMA_MG8250



Landscape and Travel

EF-S 10-22mm f/3.5-4.5 USM

This ultra wide-angle lens is ideal to show the power of a dramatic landscape, or the detail of exquisite architecture and interiors.



Portrait

EF 50mm f/1.4 USM

EF 40mm f/2.8 STM

Two classic lenses that are capable of great natural portraits in low light thanks to their fast maximum apertures.



General

EF-S 18-55mm f/3.5-5.6 IS STM

EF-S 18-135mm f/3.5-5.6 IS STM

Versatile standard zoom lenses that are suited to a variety of subjects, from landscapes and architecture to portraits and street photography. STM provides smooth, quiet focusing when shooting video.

Specifications: EOS 100D

Resolution	Approx. 18.0 MP for prints up to A2
Sensor Type	APS-C sized Canon Hybrid CMOS AF II sensor
Focal Length Multiplier	1.6x
Continuous Shooting (approx.)	4fps
Processor	14-bit DIGIC 5 high-performance processor for fine gradation and natural colours
Optical Viewfinder	Bright viewfinder with 95% coverage, 0.87x, 19mm. Pentamirror
Shutter Speeds	30 - 1/4000, Bulb
Shooting Modes	11 (plus 6 Special Scene modes) and Movie
Metering Sensor	iFCL metering system with 63-zones
Metering Options	4
ISO Sensitivity	100-12800 + H: 25600
AF System/Points	Wide-area, 9-point AF with 1 centre cross-type sensor
LCD	Touch screen 7.7cm (3.0") 3:2 Clear View LCD II, approx. 1040k dots
EOS Movies	Full HD 1080p (30/25fps) HD 720p (50fps) 640 x 480 (30/25fps) Manual control with selectable frame rates, sound level control and Video Snapshot
Built-in Flash	Yes, Guide Number 9.4
HDMI Connection	Yes
Memory Cards	SD, SDHC or SDXC (UHS-I) card
Dimensions (WxHxD)	116.8 x 90.7 x 69.4mm
Weight (body only) CIPA testing standard, including battery and memory card	Approx. 407g

All data is based on Canon standard testing methods except where indicated. Subject to change without notice.



Canon

Canon Inc.
canon.com

Canon Europe
canon-europe.com

English Edition
© Canon Europa N.V., 2013

Canon Europe Ltd
3 The Square, Stockley Park
Uxbridge, Middlesex
UB11 1ET, UK