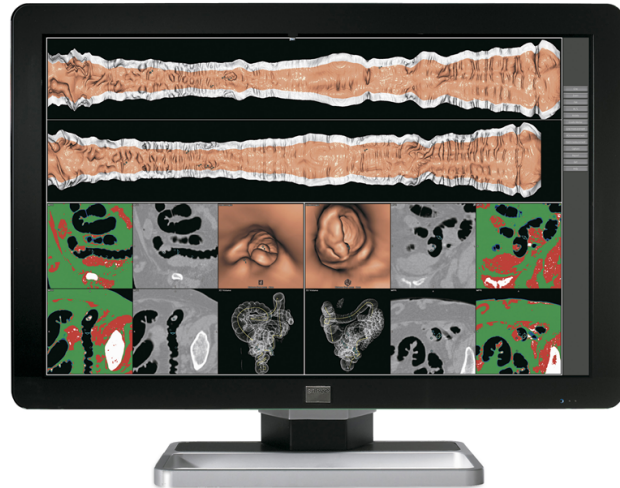


Coronis Fusion 6MP DL (MDCC-6130)

6 MegaPixel wide-screen diagnostic color display system



Coronis Fusion 6MP DL is an ingenious PACS display system designed to further enhance flexibility and productivity in diagnostic imaging.

Enhanced viewing comfort

Featuring the industry's first 30-inch color LCD that can be used as two seamless 3 MegaPixel heads or one wide-screen 6 MegaPixel display, Coronis Fusion 6MP DL offers you the freedom to organize your workspace just the way you want it.

Addressing the needs of both grayscale and color imaging, the Coronis Fusion 6MP DL allows you to read CT, MR, cath and echo cardiogram images, or any other combination, side by side on a single diagnostic screen.

A perfect view from every angle

Coronis Fusion 6MP DL features the latest, breakthrough In-Plane Switching (IPS-Pro) LCD technology. This technology brings the most advanced LCD viewing characteristics on the market, setting new standards for brightness and contrast, even from a wide viewing angle.

Coronis Fusion 6MP DL has 510(k) clearance from the US Food and Drug Administration and is available for commercial distribution worldwide.

Bright and green with LED backlights

Barco's Coronis Fusion 6MP is also available with LED backlights, boosting brightness levels even further for enhanced diagnostic performance, while saving energy and extending lifespan.

The Coronis Fusion 6MP DL display system includes:

- One or more 6 MegaPixel color flat panel displays
- MediCal QAWeb software for automated calibration and Quality Assurance
- A high-speed, high-performance display controller: check the compatibility matrix

BARCO

Visibly yours

Technical specifications

I-Luminate button	No
RapidFrame technology	No
Screen technology	TFT AM Color LCD Dual Domain IPS-Pro
Active screen size (diagonal)	772 mm (30.4")
Active screen size (H x V)	654 x 409 mm (25.8 x 16.1")
Aspect ratio (H:V)	16:10
Resolution	native 6MP (3280 x 2048) configurable to 2 x 3MP+ (1640 X 2048) configurable to 2 x 3MP (1536 X 2048)
Pixel pitch	0.1995 mm
Color imaging	Yes
Gray imaging	Yes
Color support	30 bit
Viewing angle (H, V)	178°
Uniform Luminance Technology (ULT)	Yes
Per Pixel Uniformity (PPU)	No
Ambient Light Compensation (ALC)	Yes
I-Guard	Yes
Maximum luminance	800 cd/m ²
DICOM calibrated luminance (ULT off)	500 cd/m ²
Contrast ratio (dark reading room, typical)	1000:1
Response time (Tr + Tf)	18 ms
Video input signals	DVI-D Dual Link (2x)
USB ports	1 upstream (endpoint), 3 downstream
USB standard	2.0
Power consumption (nominal)	166W
Power save mode	Yes
Dimensions with stand (W x H x D)	Portrait: NA Landscape: 731 x 580~676 x 265 mm
Dimensions w/o stand (W x H x D)	Portrait: NA Landscape: 731 x 485 x 141 mm
Net weight with stand	26.9 kg
Mounting standard	VESA (100 mm)
Screen protection	Protective, non-reflective glass cover
Recommended modalities	CT, MR, US, DR, CR, NM, Film
Certifications	UL 60601-1 1ST EDITION, CAN/CSA-C22.2 NO. 601.1-M90, IEC 60601-1 2ND ED:1988 + A1:1991 + A2:1995, IEC 60950-1:2001 1ST EDITION, CE - 89/336/EEC, CE - 93/42/EEC, DEMKO - EN 60601-1, CCC - GB9254-2008 + GB4943-2001 + GB17625.1-2003, BSMI -CNS13438(95) + CNS14336(94), VCCI, FCC class B, ICES-001 Level B, KC, BSMI, MDD class IIb, FDA 510k, RoHS
Supplied accessories	Getting Started Guide Quick-Installation Sheet Video cables (2 x DVI Dual Link) Main cables (UK, European (CEBEC/KEMA), USA (UL/CSA; adaptor plug NEMA 5-15P), Chinese (CCC)) USB 2.0 cable External power supply

Optional accessories	NA
QA software	MediCal QAWeb
Warranty	5 years