



HP DreamColor Z27x Display

User Guide

© 2014 Hewlett-Packard Development
Company, L.P.

ENERGY STAR and the ENERGY STAR
mark are registered U.S. marks. Microsoft,
Windows, and Windows 7 are U.S.
registered trademarks of the Microsoft
group of companies.


The information contained herein is subject
to change without notice. The only
warranties for HP products and services are
set forth in the express warranty statements
accompanying such products and services.
Nothing herein should be construed as
constituting an additional warranty. HP shall
not be liable for technical or editorial errors
or omissions contained herein.


First Edition: April 2014

Document Part Number: 748432-001

About This Guide

This guide provides information on monitor features, setting up the monitor, and technical specifications.

 **WARNING!** Text set off in this manner indicates that failure to follow directions could result in bodily harm or loss of life.

 **CAUTION:** Text set off in this manner indicates that failure to follow directions could result in damage to equipment or loss of information.

 **NOTE:** Text set off in this manner provides important supplemental information.

Table of contents

1 Product Features	1
HP Z27x Monitor	1
2 Safety and Maintenance Guidelines	3
Important Safety Information	3
Maintenance Guidelines	3
Cleaning the Monitor	4
Shipping the Monitor	4
3 Setting Up the Monitor	5
Use Caution When Setting Up the Monitor	5
Installing the Stand	6
Rear Components	7
Connecting the Cables	8
Front Panel Controls	13
Adjusting the Monitor	14
Turning on the Monitor	17
HP Watermark and Image Retention Policy	18
Connecting USB Devices	18
Removing the Monitor Stand	18
Mounting the Monitor	19
Mounting the Monitor Using the Quick Release 2 Mounting Bracket	20
Mounting the Monitor Without Using the Quick Release 2 Mounting Bracket	23
Installing an Optional HP Hood Kit	23
Locating the Serial Number and Product Number	25
Locating the Information Card	25
Attaching a Device to the Rear of the Monitor	26
Installing a Cable Lock	27
4 Operating the Monitor	28
Software and Utilities	28
The Information File	28
The Image Color Matching File	28
Installing the .INF and .ICM Files	29
Installing from the Disc	29
Downloading from the Internet	29

Updating the Firmware	29
Selecting a Color Space Preset	31
Adjusting Luminance	31
Understanding the Z27x Image Adjustment Options	32
Use Video Levels (16–235)	32
Overscan the Frame	32
Show Only the Blue Channel	33
Using the Z27x Aspect Ratio Management Options	33
The “Fill To” Options	33
Fill to Source Aspect Ratio (Proportional)	33
Fill to Entire Screen (Non-Proportional)	33
Fill to Screen Width (Proportional)	34
Fill to Screen Height (Proportional)	34
Pixel-for-Pixel	34
“Fill To” Examples	34
Working with 2K and 4K Digital Cinema Image Formats	36
Using the Digital Cinema Display Options	37
Show Entire DCI Container	37
Crop to DCI 1.85:1 Aspect Ratio	37
Crop to DCI 2.39:1 Aspect Ratio	37
Show Cropped Region	38
Set Cropped Region Opacity	38
Displaying 4K Source Video	38
Obey Aspect Ratio Display Option	38
Scale and Show Center Extraction	38
Scale and Show Left Side of Frame	38
Scale and Show Right Side of Frame	38
Show 4K Source Video Pixel-for-Pixel	38
Next 4K Corner	39
Scroll 4K Region	39
Using Picture-in-Picture (PIP) and Picture-beside-Picture (PBP)	39
Using PIP as a Confidence Monitor	40
Use Video Levels (16–235)	40
Overscan Within PIP	40
Digital Cinema Options	40
Changing the Bezel Button Functions	40
Changing the Bezel Function Button Mode	41
Adjusting the Bezel Button LEDs	43
Using Auto-Sleep Mode	43
Using the On-Screen Display Menu	44
Color Space Menu	45

Video Input Menu	46
Image Adjustment Menu	46
PIP Control Menu	48
Language Menu	49
Management Menu	50
Menu and Message Control Menu	53
Information and Factory Reset Menus	55
Introduction to Color Calibration	55
Preparing to Calibrate	56
Calibrating the Z27x Using the Onscreen Menus	57
Recalibrate the Current Preset	57
Select and Modify a Preset	57
Auto EDID Update	58
Appendix A Technical Specifications	60
Z27x Model	60
Recognizing Preset Display Resolutions	61
Z27x Model	61
Appendix B Support and Troubleshooting	63
Solving Common Problems	63
Button Lockouts	64
Product Support	65
Preparing to Call Technical Support	65
Appendix C Agency Regulatory Notices	66
Federal Communications Commission Notice	66
Modifications	66
Cables	66
Declaration of Conformity for Products Marked with the FCC Logo (United States Only)	66
Canadian Notice	67
Avis Canadien	67
European Union Regulatory Notice	67
German Ergonomics Notice	67
Japanese Notice	68
Korean Notice	68
Power Cord Set Requirements	68
Japanese Power Cord Requirements	68
Product Environmental Notices	68
ENERGY STAR® Qualification	68

Materials Disposal	69
Disposal of Waste Equipment by Users in Private Household in the European Union	69
HP Recycling Program	70
Chemical Substances	70
Restriction of Hazardous Substances (RoHS)	70
Turkey EEE Regulation	71
Ukraine Restriction of Hazardous Substances	71

Appendix D LCD Monitor Quality and Pixel Policy	72
--	-----------

1 Product Features

HP Z27x Monitor

The LCD (liquid crystal display) monitor has an active matrix, thin-film transistor (TFT) panel. The monitor features include:

- 68.58 cm (27-inch) diagonal viewable area display with 2560 x 1440 resolution, plus full-screen support for lower resolutions; includes custom scaling to support 4096×2160 or 3840×2160 resolutions using a variety of presentation methods
- Wide color gamut to provide 100% coverage of both AdobeRGB and sRGB color spaces and 98% of DCI-P3
- Ability to accurately remap the color gamut of the monitor (within the supported color gamut of the panel) to enable the selection of the color space and very accurately set the RGB primaries for consistent and repeatable colors
- Very high color and luminance stability (with typical use)
- Calibrated color space factory presets for sRGB, AdobeRGB, DCI-P3, BT.709, BT.601, and BT-2020 so the monitor is ready to use for color critical applications with minimal setup
- Re-calibrateable color presets that allow you to re-calibrate to a standard or custom color space by specifying the color primaries, white point, gamma, and luminance (requires the separately purchased HP DreamColor Calibration Solution kit)
- Option to return to Factory Calibration settings or User Calibration settings to easily restore the monitor to the factory or user settings
- User calibration that requires the DreamColor calibration solution kit (sold separately) or a third-party measurement device
- Built-in support for the Klein K10-A Photo Research PR-6xx, 7xx series, and Konica Minolta CA-310 measurement devices
- Updatable monitor firmware to enable HP to quickly and easily provide solutions to identified problems and provide custom solutions
- Four reconfigurable front bezel Function buttons to quickly select the most commonly used operations
- Wide viewing angle to allow viewing from a sitting or standing position, or moving from side-to-side
- Adjustable tilt, height, swivel, and pivot capabilities
- Removable stand for flexible monitor panel mounting solutions
- HP Quick Release 2 to quickly install the monitor on the stand with a simple click and remove it with the convenient sliding tab release
- Optional thin client mounting bracket that attaches to the rear of the stand (purchased separately)
- 40mm x 40mm VESA standard mounting holes on rear panel for mounting an external device
- Easy access pull-out information card with the information needed when contacting HP support

- Two video signal inputs to support DisplayPort digital with one cable provided
- Video signal input to support HDMI digital with cable provided
- Analog audio output for headphones or an optional HP speaker bar
- SPDIF digital audio output
- RJ-45 network connector
- DreamColor USB 2.0 ports for connecting a color calibration tool or updating firmware
- USB 3.0 hub with one upstream port (cable provided) that connects to the computer and four downstream ports that connect to USB devices
- Plug and play capability if supported by your operating system
- Security slot provision on rear of monitor for optional cable lock
- Cable management feature for placement of cables and cords
- On-Screen Display (OSD) adjustments in several languages for easy setup and screen optimization
- HDCP (High-Bandwidth Digital Content Protection) copy protection on all digital inputs
- Software and documentation disc that includes monitor drivers, product documentation, and Windows-based calibration software

2 Safety and Maintenance Guidelines

Important Safety Information

A power cord is included with the monitor. If another cord is used, use only a power source and connection appropriate for this monitor. For information on the correct power cord set to use with the monitor, refer to the [Power Cord Set Requirements on page 68](#).

⚠ WARNING! To reduce the risk of electric shock or damage to the equipment:

- Plug the power cord into an AC outlet that is easily accessible at all times.
- Disconnect power from the computer by unplugging the power cord from the AC outlet.
- If provided with a 3-pin attachment plug on the power cord, plug the cord into a grounded (earthed) 3-pin outlet. Do not disable the power cord grounding pin, for example, by attaching a 2-pin adapter. The grounding pin is an important safety feature.

For your safety, do not place anything on power cords or cables. Arrange them so that no one may accidentally step on or trip over them. Do not pull on a cord or cable. When unplugging from the electrical outlet, grasp the cord by the plug.

To reduce the risk of serious injury, read the *Safety and Comfort Guide*. It describes proper workstation, setup, posture, and health and work habits for computer users, and provides important electrical and mechanical safety information. This guide is located on the Web at <http://www.hp.com/ergo>.

⚠ CAUTION: For the protection of the monitor, as well as the computer, connect all power cords for the computer and its peripheral devices (such as a monitor, printer, scanner) to some form of surge protection device such as a power strip or Uninterruptible Power Supply (UPS). Not all power strips provide surge protection; the power strips must be specifically labeled as having this ability. Use a power strip whose manufacturer offers a Damage Replacement Policy so you can replace the equipment, if surge protection fails.

Use the appropriate and correctly sized furniture designed to properly support your HP LCD monitor.

⚠ WARNING! LCD monitors that are inappropriately situated on dressers, bookcases, shelves, desks, speakers, chests, or carts may fall over and cause personal injury.

Care should be taken to route all cords and cables connected to the LCD monitor so that they can not be pulled, grabbed, or tripped over.

Maintenance Guidelines

To enhance the performance and extend the life of the monitor:

- Do not open the monitor cabinet or attempt to service this product yourself. Adjust only those controls that are covered in the operating instructions. If the monitor is not operating properly or has been dropped or damaged, contact an authorized HP dealer, reseller, or service provider.
- Use only a power source and connection appropriate for this monitor, as indicated on the label/back plate of the monitor.
- Be sure the total ampere rating of the products connected to the outlet does not exceed the current rating of the electrical outlet, and the total ampere rating of the products connected to the

cord does not exceed the rating of the cord. Look on the power label to determine the ampere rating (AMPS or A) for each device.

- Install the monitor near an outlet that you can easily reach. Disconnect the monitor by grasping the plug firmly and pulling it from the outlet. Never disconnect the monitor by pulling the cord.
- Turn the monitor off when not in use. You can substantially increase the life expectancy of the monitor by using a screen saver program and turning off the monitor when not in use.



NOTE: Monitors with a “burned-in image” are not covered under the HP warranty.

- Slots and openings in the cabinet are provided for ventilation. These openings must not be blocked or covered. Never push objects of any kind into cabinet slots or other openings.
- Do not drop the monitor or place it on an unstable surface.
- Do not allow anything to rest on the power cord. Do not walk on the cord.
- Keep the monitor in a well-ventilated area, away from excessive light, heat or moisture.
- When removing the monitor stand, you must lay the monitor face down on a soft area to prevent it from getting scratched, defaced, or broken.

Cleaning the Monitor

1. Turn off the monitor and unplug the power cord from the back of the unit.
2. Dust the monitor by wiping the screen and the cabinet with a soft, clean antistatic cloth.
3. For more difficult cleaning situations, use a 50/50 mix of water and Isopropyl alcohol.



CAUTION: Spray the cleaner onto a cloth and use the damp cloth to gently wipe the screen surface. Never spray the cleaner directly on the screen surface. It may run behind the bezel and damage the electronics.


CAUTION: Do not use cleaners that contain any petroleum based materials such as benzene, thinner, or any volatile substance to clean the monitor screen or cabinet. These chemicals may damage the monitor.

Shipping the Monitor

Keep the original packing box in a storage area. You may need it later if you move or ship the monitor.

3 Setting Up the Monitor

To set up the monitor, ensure that the power is turned off to the monitor, computer system, and other attached devices, then follow the instructions below.


 **NOTE:** Be sure the master power switch, located on the rear panel of the monitor, is in the off position. The master power switch turns off all power to the monitor.

Use Caution When Setting Up the Monitor

To prevent damage to the monitor, do not touch the surface of the LCD panel. Pressure on the panel may cause non-uniformity of color or disorientation of the liquid crystals. If this occurs the screen will not recover to its normal condition.

If installing a base, lay the monitor face down on a flat surface covered with a protective sheet foam or non-abrasive cloth. This prevents the screen from getting scratched, defaced or broken as well as damage to the front panel buttons.



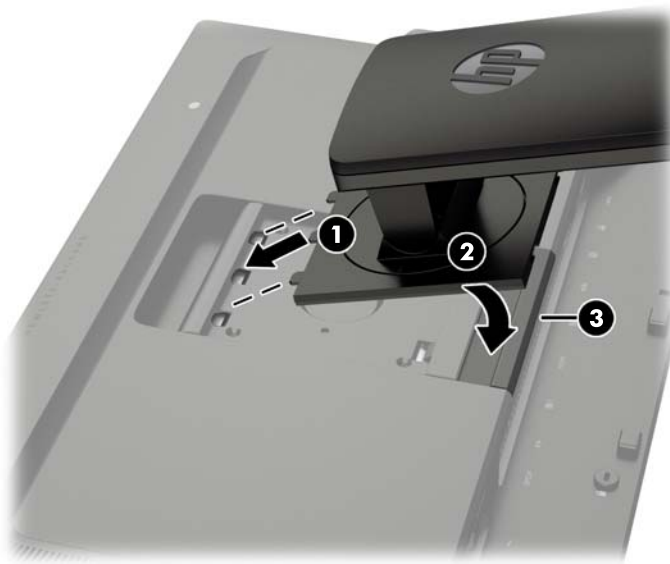
 **NOTE:** Your monitor may look different from the monitor in this illustration.

Installing the Stand

CAUTION: Do not touch the surface of the LCD panel. Pressure on the panel may cause non-uniformity of color or disorientation of the liquid crystals. If this occurs the screen will not recover to its normal condition.

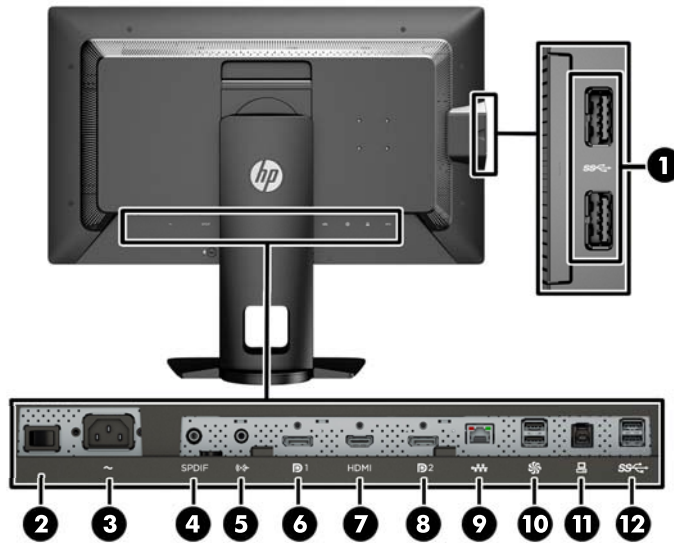
The monitor uses the HP Quick Release 2 for easy mounting and unmounting of the monitor panel. To mount the panel onto the stand:













1. Lay the monitor panel face down on a flat surface covered by a clean, dry cloth.
2. Slide the top of the mounting plate (1) on the stand under the upper lip of the recess in the back of the panel.
3. Lower the bottom of the stand's mounting plate (2) into the recess until it snaps into place.
4. The HP Quick Release 2 latch (3) pops up when the stand is locked in place.



NOTE: If you are mounting the monitor to a mounting fixture instead of the stand refer to [Mounting the Monitor on page 19](#)

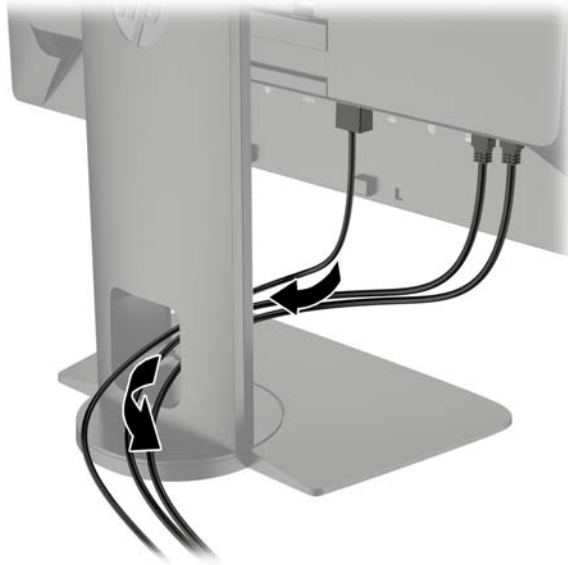
Rear Components




Component	Function
1 	USB 3.0 Downstream Connectors (side panel) Connects optional USB devices to the monitor.
2 	Master Power Switch Turns off all power to the monitor. NOTE: Putting the switch in the Off position will yield the lowest power state for the monitor when not in use.
3 	AC Power Connector Connects the AC power cord to the monitor.
4 	Digital Audio Out Connects a digital audio component to the monitor.
5 	Analog Audio Out Connects headphones or optional HP Speaker Bar to the monitor.
6 	DisplayPort 1 Connects a DisplayPort cable to the monitor.
7 	HDMI Connects an HDMI cable to the monitor.
8 	DisplayPort 2 Connects a DisplayPort cable to the monitor.
9 	RJ-45 Network Connector Connects a network cable to the monitor.
10 	DreamColor USB 2.0 Ports Connects a color calibration instrument or a USB flash drive for color calibration or firmware update.
11 	USB 3.0 Upstream Port Connects the USB hub cable to the monitor's USB hub connector and to a host USB port/hub.
12 	USB 3.0 Downstream Ports Connects optional USB devices to the monitor.

Connecting the Cables


1. Place the monitor in a convenient, well-ventilated location near the computer.
2. Before connecting the cables, route the cables through the cable routing hole in the center of the stand.

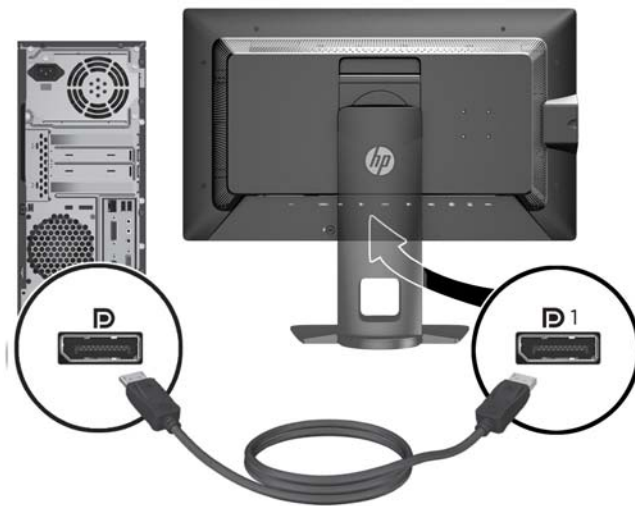


3. Depending on your configuration, connect either the DisplayPort or HDMI video cable between the PC and the monitor.

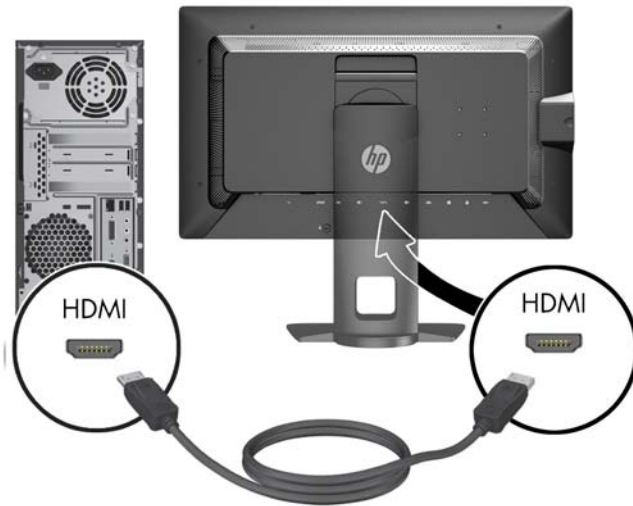
 **NOTE:** The video mode is determined by the video cable used. The monitor will automatically determine which inputs have valid video signals. The inputs can be selected through the On-Screen Display (OSD) feature by pressing one of the five front bezel buttons to activate the buttons, and then press the bottom **Open Menu** button to open the OSD. In the OSD select **Video Input** and choose the desired input source.

- For DisplayPort digital operation, connect the DisplayPort signal cable to the DisplayPort connector on the rear of the monitor and the other end to the DisplayPort connector on the computer (cable provided).


 **NOTE:** There are two DisplayPort connectors on the rear of the monitor allowing you to connect two workstations to the monitor.

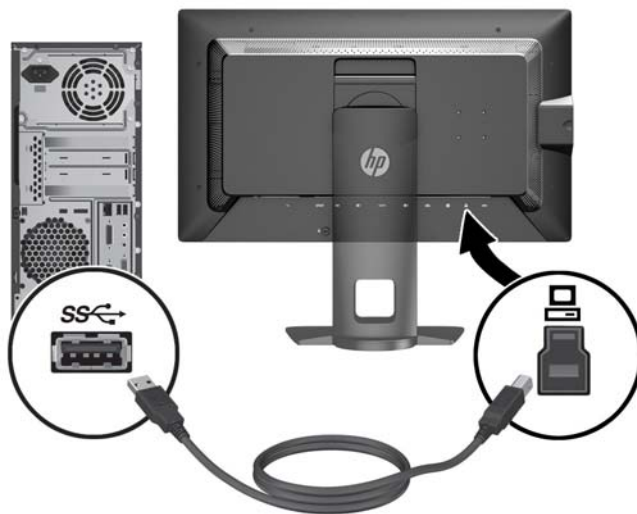


- For HDMI digital operation, connect the HDMI signal cable to the HDMI connector on the rear of the monitor and the other end to the HDMI connector on the computer (cable provided).

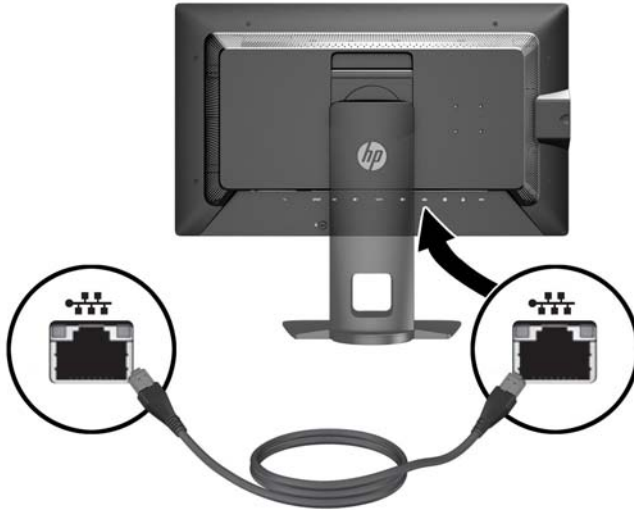


4. Connect one end of the provided USB cable to the USB hub connector on the rear panel of the computer, and the other end to the upstream USB connector on the monitor.


 **NOTE:** The monitor supports USB 3.0. For optimal performance, connect the USB cable to a USB 3.0 port on the computer, if available.

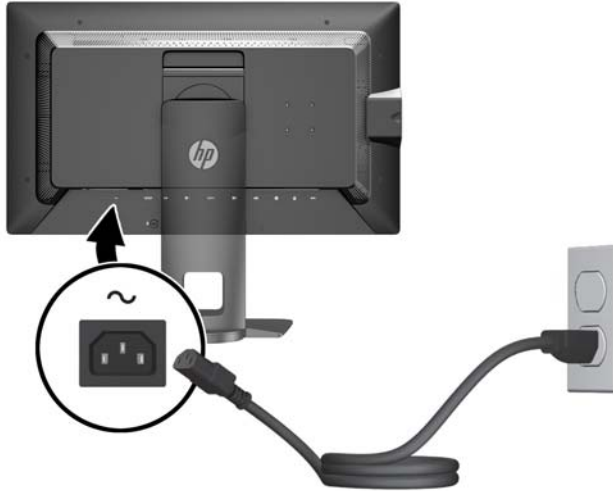



5. Connect a live network connector to the network connector on the rear of the monitor (optional).



6. Connect one end of the power cord to the AC power connector on the back of the monitor, and the other end to an electrical wall outlet.

 **NOTE:** The master power switch on the rear of the monitor must be in the On position before pressing the power button on the front of the monitor.



 **WARNING!** To reduce the risk of electric shock or damage to the equipment:

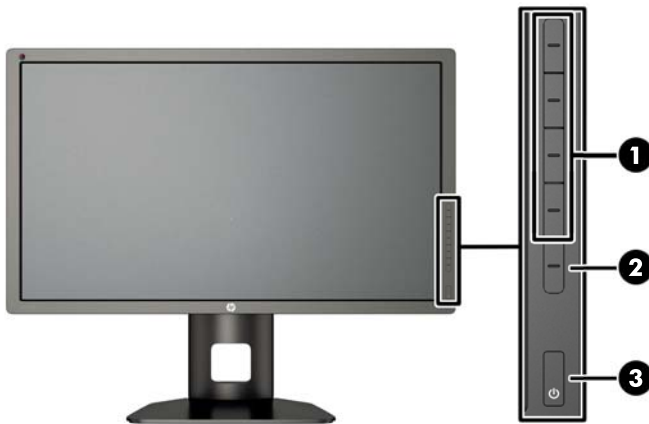
Plug the power cord into an AC outlet that is easily accessible at all times.

Disconnect power from the computer by unplugging the power cord from the AC outlet.


If provided with a 3-pin attachment plug on the power cord, plug the cord into a grounded (earthed) 3-pin outlet. Do not disable the power cord grounding pin, for example, by attaching a 2-pin adapter. The grounding pin is an important safety feature.


For your safety, do not place anything on power cords or cables. Arrange them so that no one may accidentally step on or trip over them. Do not pull on a cord or cable. When unplugging from the electrical outlet, grasp the cord by the plug.

Front Panel Controls



Control	Function
1	Function buttons Use these buttons to navigate through the OSD based on the indicators next to the buttons that are activated while the OSD is open.
2	Open Menu button Opens and closes the OSD. NOTE: To activate the Open Menu button and the Function buttons, press any of the buttons so that the button labels appear on the right side of the screen and the button LEDs are lit.
3	Power button Turns the monitor on or off. NOTE: Be sure the master power switch on the rear of the monitor is in the ON position to turn on the monitor.

 **NOTE:** To view an OSD menu simulator, visit the HP Customer Self Repair Services Media Library at <http://www.hp.com/go/sml>.

 **NOTE:** You can adjust the bezel button brightness and change the function of the buttons in the OSD. Refer to [Adjusting the Bezel Button LEDs on page 43](#) and [Changing the Bezel Button Functions on page 40](#) for more information.

Adjusting the Monitor

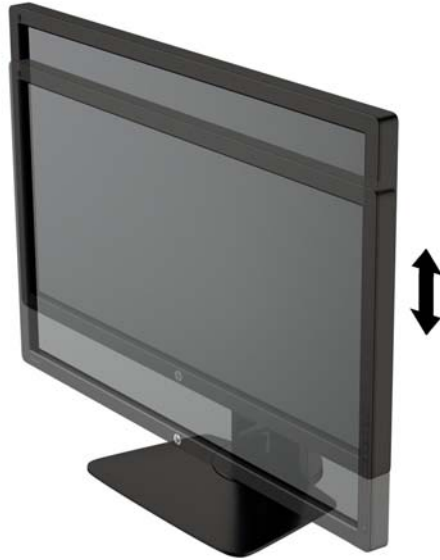
1. Tilt the monitor's panel forward or backward to set it to a comfortable eye level.



2. Swivel the monitor to the left or right for the best viewing angle.



3. Adjust the monitor's height to a comfortable position for your individual workstation. The monitor's top bezel edge should not exceed a height that is parallel to your eye height. A monitor that is positioned low and reclined may be more comfortable for users with corrective lenses. The monitor should be repositioned as you adjust your working posture throughout the work day.



4. You can pivot the monitor from landscape to portrait orientation viewing to adapt to your application.
 - a. Adjust the monitor to full height position and tilt the monitor back to full tilt position (1).
 - b. Pivot the monitor clockwise 90° from landscape to portrait orientation (2).

CAUTION: If the monitor is not in full height and full tilt position when pivoting, the bottom right corner of the monitor panel will come in contact with the base and potentially cause damage to the monitor.

If you are adding an optional speaker bar to the monitor, install it after pivoting the monitor. The speaker bar will come in contact with the base when pivoting and potentially cause damage to the monitor or speaker bar.





NOTE: Use the operating system's display settings to rotate the image on the screen from portrait to landscape. To rotate the OSD from portrait to landscape, open the OSD and select **Image Adjustment > On-Screen Menu Rotation > Portrait**.

Turning on the Monitor

1. Set the master power switch on the rear of the monitor to the On position.
2. Press the power button on the computer to turn it on.
3. Press the power button on the front of the monitor to turn it on.



CAUTION: Burn-in image damage may occur on monitors that display the same static image on screen for a prolonged period of time.* To avoid burn-in image damage on the monitor screen, you should always activate a screen saver application or turn off the monitor when it is not in use for a prolonged period of time. Image retention is a condition that may occur on all LCD screens. Monitors with a “burned-in image” are not covered under the HP warranty.

* A prolonged period of time is 12 consecutive hours of a static image.

NOTE: If pressing the power button has no effect, the Power Button Lockout feature may be enabled. To disable this feature, press and hold the monitor power button for 10 seconds.

When the monitor is powered on, a Monitor Status message is displayed for five seconds. The message shows which input is the current active signal, the status of the auto-switch source setting (On or Off; factory default is On), the default source signal (factory default is DisplayPort), the current preset display resolution, and the recommended preset display resolution.

The monitor automatically scans the signal inputs for an active input and uses that input for the display. If two or more inputs are active, the monitor will display the default input source. If the default source is not one of the active inputs, then the monitor will display the highest ranking priority input. You can select the input source in the OSD. Press one of the five front bezel buttons to activate the buttons, and then press the bottom **Open Menu** button to open the OSD. In the OSD select **Video Input** and choose the desired input source.


HP Watermark and Image Retention Policy

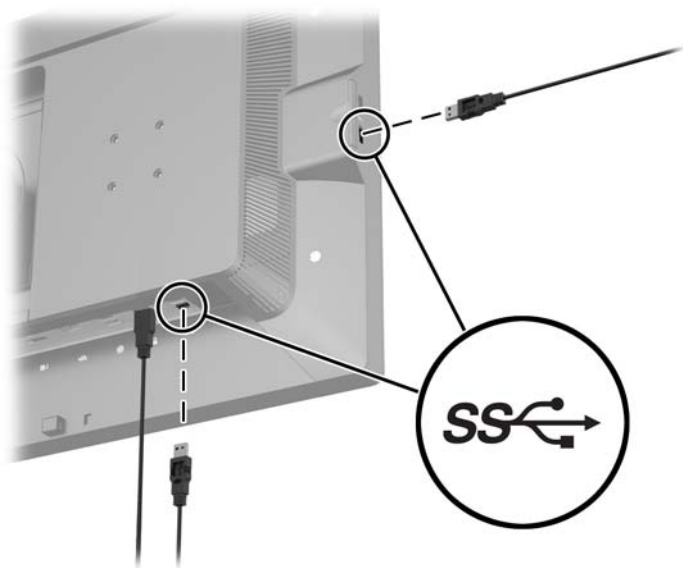
The IPS monitor models are designed with IPS (In-Plane Switching) display technology which provides ultra-wide viewing angles and advanced image quality. IPS monitors are suitable for a wide variety of advanced image quality applications. This panel technology, however, is not suitable for applications that exhibit static, stationary or fixed images for long periods of time without the use of screen savers. These types of applications may include camera surveillance, video games, marketing logos, and templates that are displayed on the screen for a prolonged period of time. Static images may cause image retention damage that could look like stains or watermarks on the monitor's screen.

Monitors in use for 24 hours per day that result in image retention damage are not covered under the HP warranty. To avoid image retention damage, always turn off the monitor when it is not in use or use the power management setting, if supported on your system, to turn off the display when the system is idle.

Connecting USB Devices


There are four downstream USB ports on the monitor (two on the rear and two on the side).

 **NOTE:** You must connect the USB hub cable from the monitor to the computer to enable the USB ports on the monitor. Refer to Step 4 in [Connecting the Cables on page 8](#).



Removing the Monitor Stand

You can remove the monitor panel from the stand to install the panel on a wall, a swing arm, or other mounting fixture.

 **CAUTION:** Before beginning to disassemble the monitor, be sure the monitor is turned off and the power, signal, and network cables are all disconnected. Also disconnect all USB cables connected to the monitor.

1. Disconnect and remove all cables from the monitor.
2. Lay the monitor face down on a flat surface covered by a clean, dry cloth.
3. Press down on the latch near the bottom center of the monitor to unlock the HP Quick Release 2 (1).


4. Swing the bottom of the stand up until the mounting plate clears the recess in the panel (2).
5. Slide the stand out of the recess (3).




Mounting the Monitor

The monitor panel can be attached to a wall, swing arm, or other mounting fixture.

You can attach the monitor panel to a mounting fixture using the HP Quick Release 2 mounting bracket or you can attach the monitor panel to a mounting fixture without the HP Quick Release 2 mounting bracket.

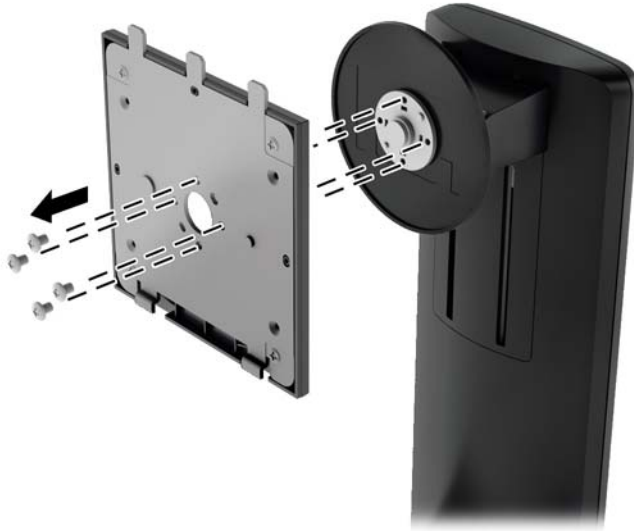
 **NOTE:** This apparatus is intended to be supported by UL or CSA Listed wall mount bracket.

 **CAUTION:** This monitor supports the VESA industry standard 100 mm mounting holes. To attach a third-party mounting solution to the monitor, four 4 mm, 0.7 pitch, and 10 mm long screws are required. Longer screws must not be used because they may damage the monitor. It is important to verify that the manufacturer's mounting solution is compliant with the VESA standard and is rated to support the weight of the monitor display panel. For best performance, it is important to use the power and video cables provided with the monitor.

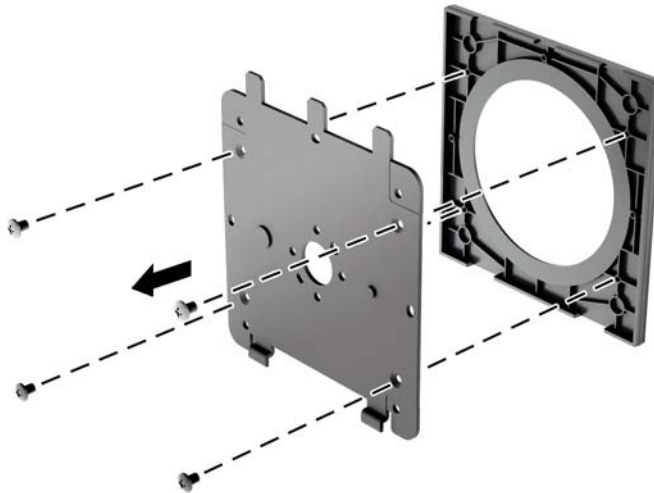
Mounting the Monitor Using the Quick Release 2 Mounting Bracket

To mount the monitor panel to a mounting fixture using the Quick Release 2 mounting bracket:

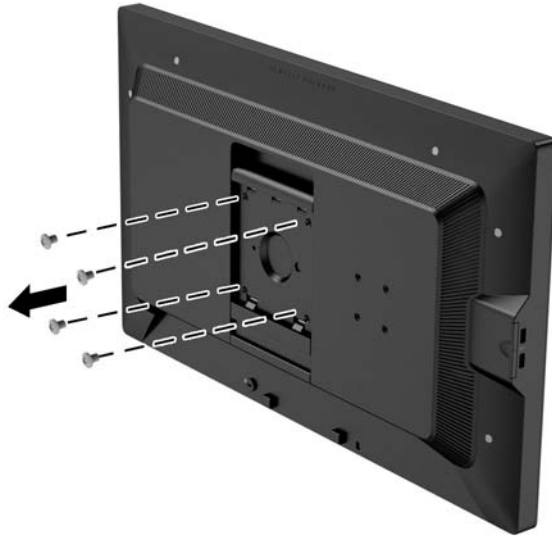
1. Remove the four screws holding the mounting plate to the head of the stand.



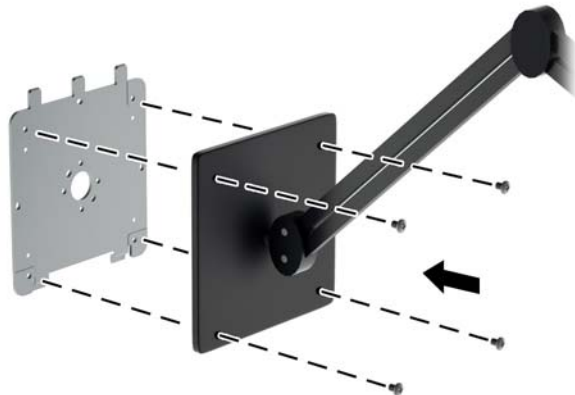
2. Remove the four screws from the mounting plate to separate the mounting plate from its cover.



3. Remove the four screws from the VESA holes located on the rear of the monitor panel.



4. Install the mounting plate to the wall or swing arm of your choice using the four screws that were removed from the VESA holes on the rear of the monitor panel.

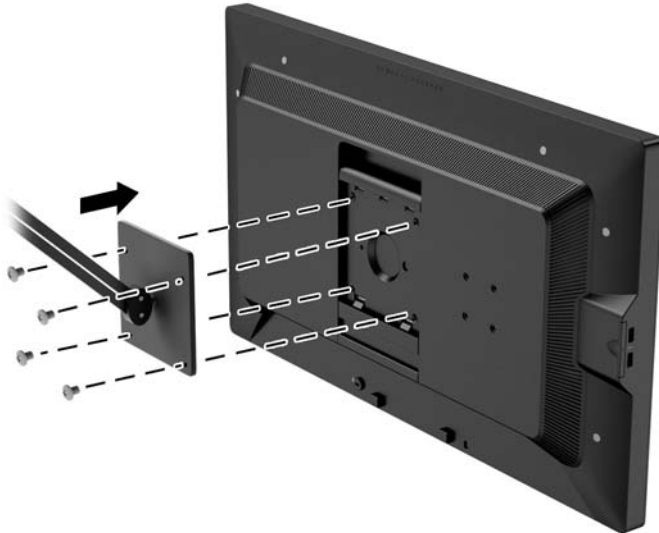


5. Place the monitor panel on the mounting bracket you've installed by aligning its recess with the mounting bracket, then sliding it down over the top of the bracket and pressing it back into place against the bracket. The release latch on the monitor will pop up when the monitor is safely locked in place.



Mounting the Monitor Without Using the Quick Release 2 Mounting Bracket

To mount the monitor panel directly to a mounting fixture without using the HP Quick Release 2 mounting bracket, use the four screws removed from the VESA holes on rear of the monitor panel and install them to attach the mounting device to the rear of the monitor panel.




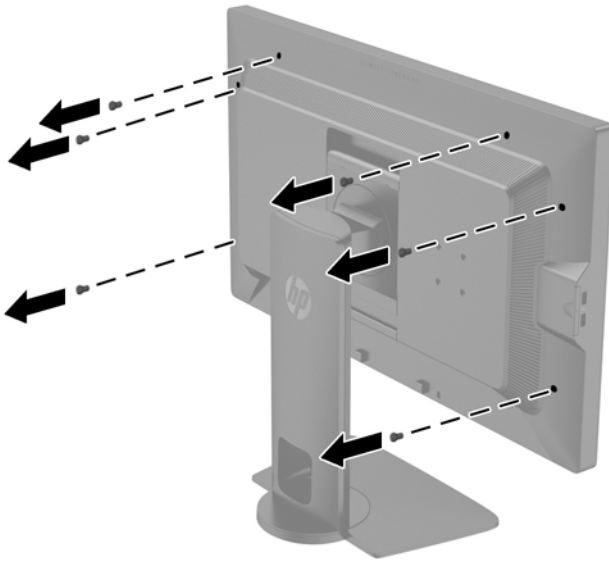
Installing an Optional HP Hood Kit

The HP LCD Hood Kit is a monitor option designed to block the glare from overhead lighting. The hood helps to improve the color and contrast performance of the monitor in a room with bright overhead lights.

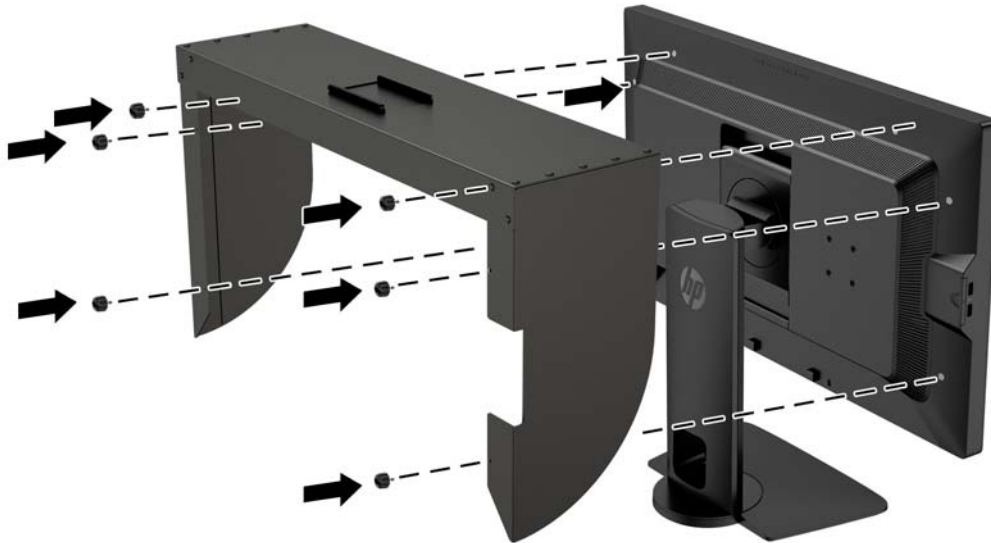
- Shields the display from ambient light
 - Reduces on-screen glare from surrounding office lighting and windows
 - Improves the monitor color and contrast performance
1. Assemble the hood according to the instructions included with the kit.

2. Remove the plugs that cover the screw holes for the hood.

 **NOTE:** You may need to use a small screwdriver to pry the plugs out.




3. Secure the hood to the monitor using the screws included in the kit.



Locating the Serial Number and Product Number

The serial number and product number are located on a label on the rear panel of the display head. You may need these numbers when contacting HP about the monitor model.

 **NOTE:** You may need to partially pivot the display head to read the label.



Locating the Information Card


Identifying information is located on the pull-out card (and included on a label on the back of the monitor). The card pulls out from behind the USB connectors on the left side of the panel. Warranty support information (model number, serial number, product number) is printed on the front of the card (and the label) and regulatory information is printed on the back of the card.

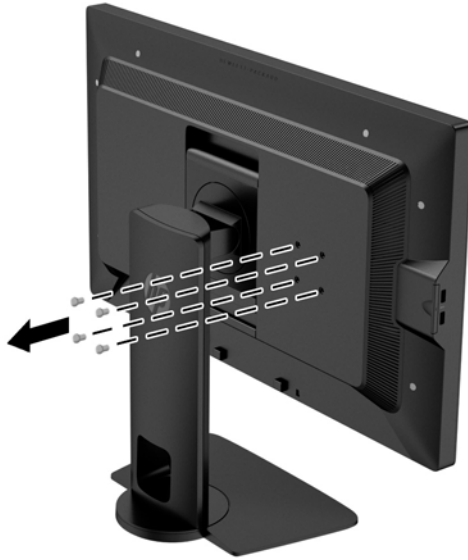


Attaching a Device to the Rear of the Monitor

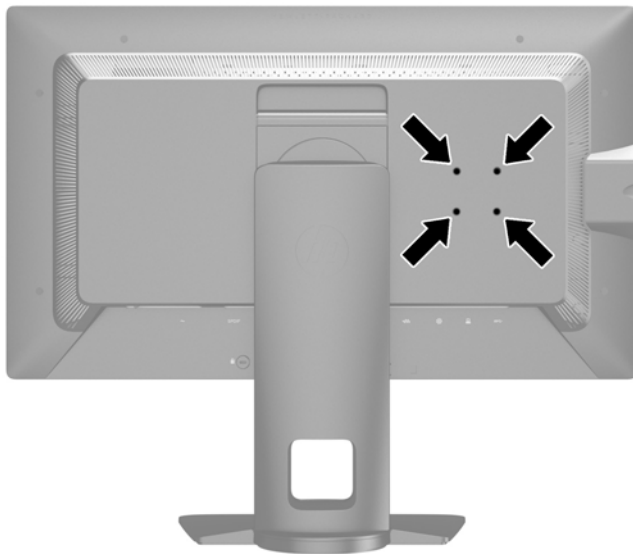
The rear of the monitor has four 40mm X 40mm VESA standard mounting holes that can be used to mount a device.

1. Remove the plugs from the VESA mounting holes on the rear of the monitor.

 **NOTE:** You may need to use a small screwdriver to pry the plugs out.

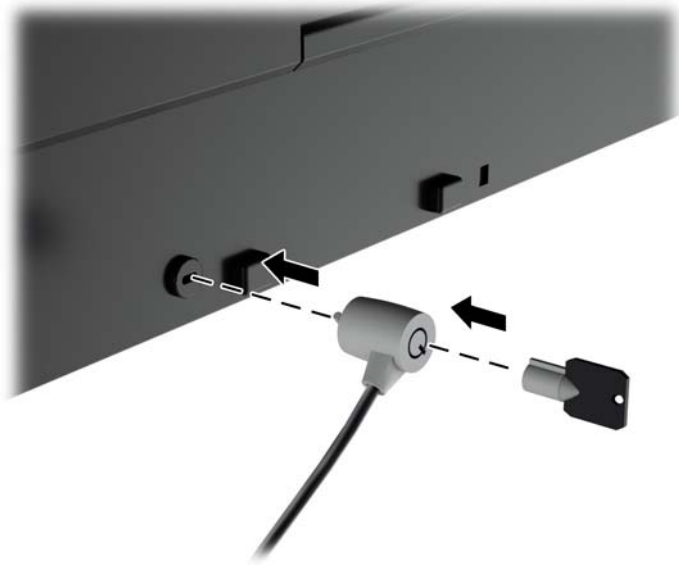


2. Mount the device to the rear of the monitor.



Installing a Cable Lock

You can secure the monitor to a fixed object with an optional cable lock available from HP.



4 Operating the Monitor

Software and Utilities

The disc that comes with the monitor contains files you can install on the computer:

- an .INF (Information) file
- ICM (Image Color Matching) files (one for each calibrated color space)
- client and server certificates for remote management via the Z27x web interface
- Z27x USB Software Development Kit (SDK) for Linux, Windows, and Mac
- sample StudioCal XML calibration files



NOTE: If the monitor does not include a disc, the items listed above can be downloaded from the HP monitors support Web site. See [Downloading from the Internet on page 29](#) in this chapter.

The Information File

The .INF file defines monitor resources used by Microsoft Windows operating systems to ensure monitor compatibility with the computer's graphics adapter.

This monitor is Microsoft Windows Plug and Play compatible and the monitor will work correctly without installing the .INF file. Monitor Plug and Play compatibility requires that the computer's graphic card is VESA DDC2-compliant and that the monitor connects directly to the graphics card. Plug and Play does not work through separate BNC type connectors or through distribution buffers/boxes.

The Image Color Matching File

The .ICM files are data files that are used in conjunction with graphics programs to provide consistent color matching from monitor screen to printer, or from scanner to monitor screen. This file is activated from within graphics programs that support this feature.



NOTE: The ICM color profile is written in accordance with the International Color Consortium (ICC) Profile Format specification.


Installing the .INF and .ICM Files

After you determine that you need to update, you can install the .INF and .ICM files from the disc or download them.

Installing from the Disc

To install the .INF and .ICM files on the computer from the disc:

1. Insert the disc in the computer optical drive. The disc menu is displayed.
2. View the **HP Monitor Software Information** file.
3. Select **Install Monitor Driver Software**.
4. Follow the on-screen instructions.
5. Ensure that the proper resolution and refresh rates appear in the Windows Display control panel.

 **NOTE:** You may need to install the digitally signed monitor .INF and .ICM files manually from the disc in the event of an installation error. Refer to the HP Monitor Software Information file on the disc.


Downloading from the Internet

To download the latest version of .INF and .ICM files from the HP monitors support Web site:

1. Go to <http://www.hp.com/support> and select the appropriate country and language.
2. Select the **Drivers & Downloads** link then enter **Z27x** in the search box and click the **Go** button.
3. Select your model then select your language and operating system.
4. Download the software by following the instructions.

Updating the Firmware

HP recommends that you check for updated display firmware and install newer firmware if available.

 **NOTE:** By default, the monitor's internal processor – which is required for firmware updating – is disabled. You must enable the processor before you can update the monitor firmware. In the OSD select **Management > Manage Internal Processor** and choose **Enable** to turn the processor on. If turning on just before attempting to update the firmware, wait approximately one minute for the internal processor to fully boot.

To update the firmware via USB:

1. Check your current firmware version.
 - a. Press any button on the front bezel.
 - b. Press the bottom **Open Menu** button to open the OSD.
 - c. Select **Information** to view the current firmware version.
2. Find the latest firmware on the Web.
 - a. Go to <http://www.hp.com/support> and select the country region.
 - b. Select the **Drivers & Downloads** link then enter **Z27x** in the search box and click the **Go** button.
 - c. Select your model then select your language and operating system.
 - d. Check the latest firmware revisions listed for “HP Z27x Firmware Update” to see if it is a newer version than what is currently installed.
 - e. Download the firmware onto a USB flash drive. The following USB drive formats are supported: FAT, FAT32, NTFS.
3. Insert the USB flash drive with the latest firmware into one of the DreamColor USB ports and follow the onscreen instructions to install the firmware.



TIP: A bezel button shortcut, Display Info..., is provided on the fourth bezel button in the Z27x factory configuration. You can access this information page via this shortcut, unless the bezel button has been remapped.



NOTE: The firmware is distributed as a compressed, signed tar file. Do not decompress the file before installing.



CAUTION: The monitor screen will turn black during the installation and the front panel LED will flash amber. Do not turn off the monitor during the firmware update.



Selecting a Color Space Preset

The Z27x provides factory calibrated color space presets, suitable for a wide variety of color-critical workflows including visual effects, animation, on-set/dailies viewing, professional photography, product design, print/pre-press, graphic arts, and many others. Five industry standard color spaces are provided along with two different ways to access the display's native color gamut. The following table provides information on the five provided standard color spaces.

Preset Name	Red Primary (u'v')	Green Primary (u'v')	Blue Primary (u'v')	White Point	Gamma	Luminance
sRGB	0.451, 0.523	0.125, 0.563	0.175, 0.158	D65	sRGB	250 cd/m ²
AdobeRGB	0.451, 0.523	0.076, 0.576	0.175, 0.158	D65	2.2	250 cd/m ²
BT.709	0.451, 0.523	0.125, 0.563	0.175, 0.158	D65	2.4	100 cd/m ²
BT.601	0.432, 0.525	0.130, 0.562	0.175, 0.158	D65	2.4	100 cd/m ²
BT.2020	0.557, 0.516	0.056, 0.587	0.159, 0.126	D65	2.4	100 cd/m ²
DCI P3	0.496, 0.526	0.099, 0.578	0.175, 0.158	P3	2.6	48 cd/m ²


In addition, the Native preset provides access to the display's native color gamut. This preset has also been calibrated to have a D65 white point and a 2.2 gamma.

To select a color space preset:

1. Press any button on the front bezel.
2. Press the bottom **Open Menu** button to open the OSD.
3. Select **Color Space** to display the color space configuration screen.
4. Use the **Up/Down** buttons to navigate to the desired color space then press the **Select** button to activate it.

Adjusting Luminance

Though each preset is calibrated to a specific luminance level, the luminance can be adjusted post-calibration. The luminance range for all calibrated color space presets can be adjusted from 48–250 cd/m². The Native preset can be adjusted from 0–100% of maximum display luminance.

 **NOTE:** Due to the way LEDs respond to voltage, the further you adjust luminance away from the calibrated value, the less-accurate the luminance value reported by the OSD will be. HP recommends that you calibrate your monitor to the desired working luminance.

To adjust luminance:

1. Press any button on the front bezel.
2. Press the bottom **Open Menu** button to open the OSD.
3. Select **Color Space** to display the color space configuration screen.
4. Use the **Up/Down** buttons to navigate to the **Adjust Luminance** option then press the **Select** button to activate it.
5. Use the **Increase/Decrease** buttons to adjust the luminance to the desired level.



NOTE: The **Adjust Luminance** option displays the current luminance value to the right of the menu option.

Understanding the Z27x Image Adjustment Options

The Z27x contains a number of special image adjustment options that are designed to fit specific workflows in the media and entertainment industry. The following section describes these functions from the perspective of their application in these workflows.

Use Video Levels (16–235)

This option is designed to support the accurate display of video signals that include footroom below black and headroom above white. These types of signals are typically encountered when working with video signals that conform to the complete ITU-R BT.709 or ITU-R BT.601 standards as these standards allow for excursions beyond black and white, rather than treating black and white as absolutes.

These signals are typically encountered in the following situations:

- Viewing the HDMI or HD-SDI output from a video capture and playback card such as an AJA Kona or Blackmagic Design DeckLink
- Viewing an image in the Composer/Edit/Preview window in a non-linear video editing program
- Viewing the output of a consumer Blu-Ray/DVD player

In all of these situations the video signal usually includes the BT.709/BT.601 headroom and footroom. Without this option enabled when viewed in a computer monitor the blacks and shadows are lighter, the whites are darker, and colors have less saturation than the signal actually contains.

When this option is enabled the blacks will be clipped at the 8-bit value of 16 and the whites at the 8-bit value of 235 (for 10-bit, the clipping will occur at the values of 64 and 960). The signal is then remapped to display the signal in the correct visual range.

It is important to note that the source and pre-processing of the source video will impact whether this setting should be enabled, but in many cases you will see a more-accurate image if you enable this option. Note that you may need to adjust the lightness of your editing application interface after enabling this setting.

To use video levels:

1. Press any button on the front bezel.
2. Press the bottom **Open Menu** button to open the OSD.
3. Select **Image Adjustment** to display the adjustment options screen.
4. Use the **Up/Down** buttons to navigate to the **Use Video Levels** option then press the **Select** button to select it. The option will be checked when it is active.

Overscan the Frame

Though by default the Z27x displays all pixels in the image, when screening video dailies or an edit revision it may be desirable to view the image in an overscanned mode, similar to how it is viewed on a consumer digital television. The Overscan Frame by 5% option will enlarge the image so that only that portion of the frame within the Action Safe region is displayed. Action Safe is defined as an area that begins 5% inside the edge of the frame.

To use video levels:

1. Press any button on the front bezel.
2. Press the bottom **Open Menu** button to open the OSD.
3. Select **Image Adjustment** to display the adjustment options screen.
4. Use the **Up/Down** buttons to navigate to the **Overscan Frame by 5%** option then press the **Select** button to select it. The option will be checked when it is active.

Show Only the Blue Channel

As the human is least-sensitive to changes in blue, most compression and encoding algorithms assign the least amount of bandwidth to the blue channel. Because of this, compression/encoding errors are most-easily seen when viewing the blue channel. The Z27x allows the user to view just the blue channel, temporarily turning the red and green channels off, so that the image can be inspected for these errors.

To view only the blue channel:

1. Press any button on the front bezel.
2. Press the bottom **Open Menu** button to open the OSD.
3. Select **Image Adjustment** to display the adjustment options screen.
4. Use the **Up/Down** buttons to navigate to the **Show Blue Channel Only** option then press the **Select** button to select it. The option will be checked when it is active.

Using the Z27x Aspect Ratio Management Options

The Z27x includes a number of special aspect ratio management options that go far beyond what is typically found in a computer monitor. This section discusses these options, with a focus of how these options are integrated into specific workflows.

The “Fill To” Options

These options are used to determine how the source input is displayed onscreen if its resolution is different from the monitor’s native resolution of 2560×1440.

Fill to Source Aspect Ratio (Proportional)

This option will maintain the aspect ratio of the source input, making the image as large as possible, centering it in the monitor, and using 0% black to fill the unused areas of the screen. For example, a source input that is narrower than 16×9 will be displayed at full height with black bars to the left and right of the source image, and a source input that is wider than 16×9 will be displayed at full width with black bars above and below the source image.

Fill to Source Aspect Ratio is the default and is the option most-suitable to the majority of workflows.

Fill to Entire Screen (Non-Proportional)

This option will distort non-16×9 source aspect ratios to force them to fit within the monitor’s 16×9 aspect ratio. The resulting image will take up the entire display and will either be stretched horizontally (for narrower aspect ratios) or vertically (for wider aspect ratios).

Use Fill to Entire Screen if the source aspect ratio is irrelevant and you want the entire screen to be filled, regardless of the distortion that may be caused.

Fill to Screen Width (Proportional)

This option is to be used for specific workflows with source video that is narrower than the monitor's native 16×9 aspect ratio. In some film workflows it is desired to render the animation or visual effects at a 4×3 aspect ratio and perform a “center extraction” for widescreen delivery. If enabled, this option will resize the source image so that the width matches the monitor width. Then the source image is centered vertically and the top and bottom of the image are cropped off, leaving a 16×9 “center extraction” of the 4×3 frame. The proportions of the source image are maintained.

The Fill to Screen Width option should be used when vertical center extractions are desired as part of the dailies or review screening process.

Fill to Screen Height (Proportional)

This option is to be used for specific workflows with source video that is wider than the monitor's native 16×9 aspect ratio. In some film workflows it is desired to see a 16×9 horizontal extraction of a wider source aspect ratio. If enabled, this option will resize the source image so that the height matches the monitor height. Then the source image is centered horizontally and the top and bottom of the image are cropped off, leaving a 16×9 “center extraction” of the wider frame. The proportions of the source image are maintained.

The Fill to Screen Height option should be used when horizontal center extractions are desired as part of the dailies or review screening process.

Pixel-for-Pixel

This option is to be used for source video that has a lower resolution than the monitor's native resolution of 2560×1440 and you wish to view the image without any scaling applied. For example, if your source image has a 1920×1080 resolution and you wish to inspect the pixels to ensure that there are no rendering issues in the displayed content, you may want to use this option.

This option has a specific functionality when the source video has a higher resolution than 2560×1440. This functionality will be covered in the next section.

“Fill To” Examples

The following illustrations summarize how a 4×3 source image is displayed using the “Fill to” options. The Fill to Screen Height option is not applicable to this source aspect ratio so it is not shown.

Figure 4-1 4×3 Input Source

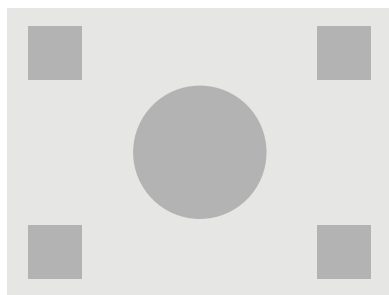


Figure 4-2 Fill to Aspect Ratio

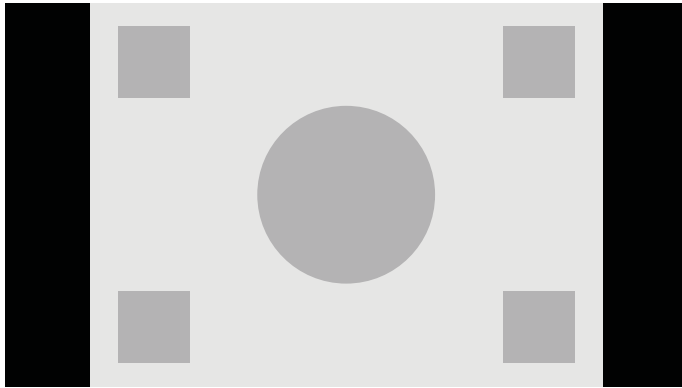


Figure 4-3 Fill to Entire Screen

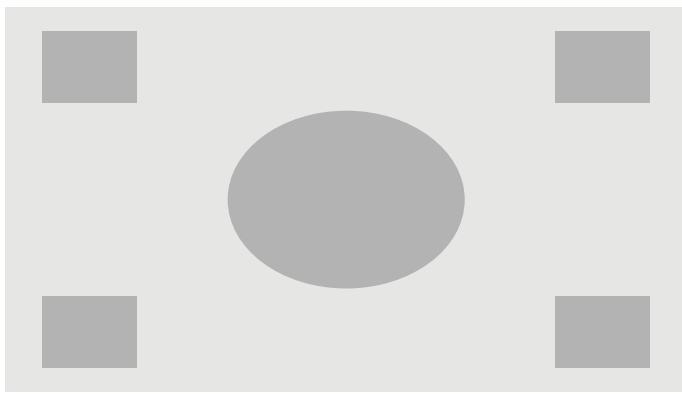


Figure 4-4 Fill to Screen Width

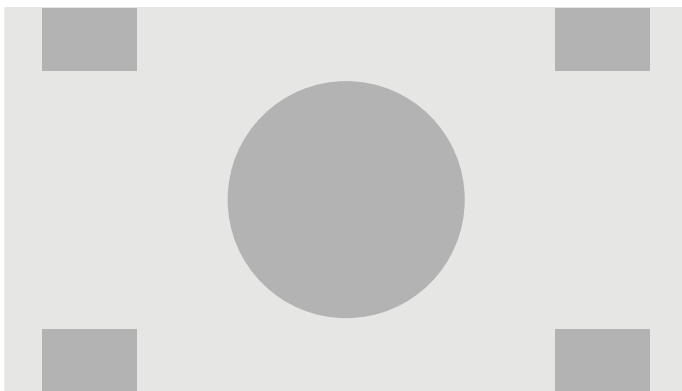
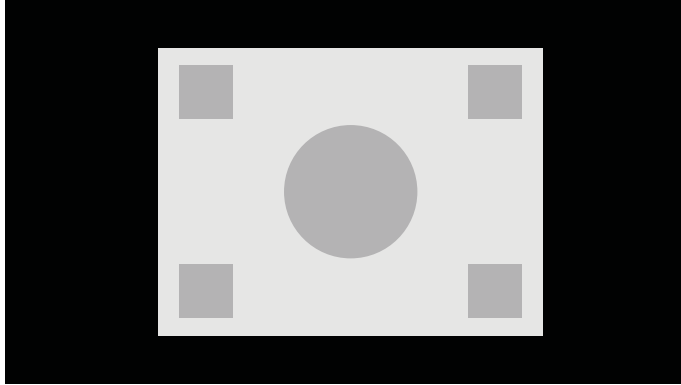


Figure 4-5 Pixel-for-Pixel



To change the way the source video is displayed onscreen:

1. Press any button on the front bezel.
2. Press the bottom **Open Menu** button to open the OSD.
3. Select **Image Adjustment** to display the adjustment options screen.
4. Select **Aspect Ratio Display** to display the display options.
5. Use the **Up/Down** buttons to navigate to the desired open option then press the **Select** button to select it.



NOTE: The Aspect Ratio Display page can be mapped to a bezel button function key for easy access. Refer to [Changing the Bezel Button Functions on page 40](#) for instructions on mapping the bezel button function keys.

Working with 2K and 4K Digital Cinema Image Formats

The Z27x has direct support for the 2048×1080 and 4096×2160 image formats (containers) as specified in the Digital Cinema Initiatives (DCI) - Digital Cinema System Specification. The following table lists the supported formats.

DCI Level	Horizontal Pixels	Vertical Pixels	Frame Rate
1	4096	2160	24.00
2	2048	1080	48.00
3	2048	1080	24.00
TBD*	2048	1080	60.00

** At the time of this document's release, the 60.00 fps 2K format has not yet been formally codified by the DCI. Support for it has been included in the Z27x in anticipation of future use and codification.*

In addition, the display supports aspect ratio masking for the two standard aspect ratios, 1.85:1 and 2.39:1, within the DCI image container. When DCI aspect ratio masking is selected the source video is masked to only show the pixels within the specified aspect ratio. The following table lists the active pixels that will be displayed for each image container and aspect ratio.

DCI Container Size	Aspect Ratio	Horizontal Active Pixels	Vertical Active Pixels
4096 × 2160	1.85:1	3996	2160


DCI Container Size	Aspect Ratio	Horizontal Active Pixels	Vertical Active Pixels
4096 × 2160	2.39:1	4096	1716
2048 × 1080	1.85:1	1998	1080
2048 × 1080	2.39:1	2048	858

Finally, special display modes for 4K input resolutions are also provided to facilitate the display of 4K content on the Z27x.

Using the Digital Cinema Display Options

All of the digital cinema display options are located in the OSD on the Main Menu > Image Adjustment > Aspect Ratio Display page. These options are unavailable and the menu option dimmed unless one of the following resolutions is being displayed via the active video input:

- 2048 × 1080
- 4096 × 2160
- 3840 × 2160

 **NOTE:** Though the Digital Cinema Options menu is available for the 3840 × 2160 resolution, the aspect ratio options are not available because 3840 × 2160 is not a DCI container size.

To access the digital cinema display options:

1. Connect a computer or video device to the monitor that is configured to output a 2048 × 1080 or 4096 × 2160 resolution.
2. Press any button on the front bezel.
3. Press the bottom **Open Menu** button to open the OSD.
4. Select **Image Adjustment** to display the adjustment options screen.
5. Select **Aspect Ratio Display** to display the display options.
6. Select **Digital Cinema Options** to display the digital cinema options.

The following DCI Aspect Ratio options are available in the Image Region section of the Digital Cinema Options page.

Show Entire DCI Container

This is the default option and will show the entire DCI 2048 × 1080 or 4096 × 2160 frame.

Crop to DCI 1.85:1 Aspect Ratio

This option crops 25 pixels from the left and right edges of the frame (for 2048-wide sources, 50 pixels from the left and right edges for 4096-wide sources). The resultant image is then displayed as specified using the Aspect Ratio Display options described in the previous section.

Crop to DCI 2.39:1 Aspect Ratio

This option crops 111 pixels from the top and bottom edges of the frame (for 2048-wide sources, 222 pixels from the top and bottom edges for 4096-wide sources). The resultant image is then displayed as specified using the Aspect Ratio Display options described in the previous section.

Show Cropped Region

When this option is enabled, rather than cropping and resizing the image to the selected aspect ratio, the image is not resized, but the region outside the desired aspect ratio is instead overlaid with a partially-transparent black mask. This option is useful, for example to check the top line in a 2.39:1 aspect ratio and see what information may be available, if the headroom needs to be adjusted via reframing.

Set Cropped Region Opacity

This option is available when Show Cropped Region is active and allows you to specify the amount of opacity applied to the cropped region. Adjust as needed to achieve the desired balance between the active and cropped regions of the frame.

Displaying 4K Source Video

Though it only has a native resolution of 2560 × 1440, the Z27x can receive and display a 4096 × 2160 or 3840 × 2160 input signal. Multiple scaling and display options are provided. To provide the highest quality display of 4K source video on the Z27x the scaling algorithm has been specifically tuned to provide a naturalistic scaling without any sharpness or edge enhancement.

When a 4096 × 2160 or 3840 × 2160 signal is input into the monitor, the following scaling options are available via the 4K Sources section of the Digital Cinema Options page. If DCI aspect ratio cropping has been selecting, these options are applied after the image is cropped.

Obey Aspect Ratio Display Option

This default option will display the image according to the selected “Fill to” Aspect Ratio Display option. Refer to [Using the Z27x Aspect Ratio Management Options on page 33](#) for information on these options.

Scale and Show Center Extraction

If selected, the center 16×9 region of the frame will be displayed with the areas outside of this center region cropped, similar to the Fill to Screen Height option discussed previously. The amount of the image shown in the center extraction is dependent on whether the entire container or an aspect ratio is displayed.

Scale and Show Left Side of Frame

If selected, the left-most 16×9 region of the frame will be displayed with the areas outside of this left side region cropped, similar to the Fill to Screen Height option discussed previously. The amount of the image shown in the left extraction is dependent on whether the entire container or an aspect ratio is displayed.

Scale and Show Right Side of Frame

If selected, the right-most 16×9 region of the frame will be displayed with the areas outside of this right side region cropped, similar to the Fill to Screen Height option discussed previously. The amount of the image shown in the right extraction is dependent on whether the entire container or an aspect ratio is displayed.

Show 4K Source Video Pixel-for-Pixel

If the Aspect Ratio Display is set to Pixel-for-Pixel and the 4K Source option is set to Obey Aspect Ratio Display Option, 4096 × 2160 and 3840 × 2160 source video can be displayed pixel-for-pixel. Two different display options are available, Show 4K Corner and Scroll 4K Region. Accessing these

two options require that a specific function be mapped to one of the four bezel function buttons. Refer to [Changing the Bezel Button Functions on page 40](#) for information on mapping the bezel function buttons. The following sections describe the usage of these two options.

Next 4K Corner

When viewing a 4K source as pixel-for-pixel, press the Next 4K Corner button to move, in order, between the following five positions:

- Center of the frame
- Top left corner
- Top right corner
- Bottom left corner
- Bottom right corner

The image will continue to switch between the five positions for each button press until Pixel-for-Pixel display is disabled.

Scroll 4K Region

When viewing a 4K source as pixel-for-pixel, press the Scroll 4K Region button to display navigation arrows, allowing you to move around the frame to the desired area.

Using Picture-in-Picture (PIP) and Picture-beside-Picture (PBP)

The monitor supports both PIP, where one source is overlaid over another, and PBP, where one source is positioned adjacent to one another either horizontally (for landscape orientation) or vertically (for portrait orientation).

To use PIP or PBP:

1. Connect a secondary input source to the monitor.
2. Press one of the five front bezel buttons to activate the buttons, and then press the bottom **Open Menu** button to open the OSD.
3. In the OSD, select **PIP Control > PIP On/Off** and then select either **Picture-in-Picture** or **Picture-beside-Picture**.
4. The monitor will scan the secondary inputs for a valid input and use that input for the PIP/PBP picture. If you want to change the PIP/PBP input, select **PIP Input** in the OSD and select the desired input (**DisplayPort 1**, **DisplayPort 2**, or **HDMI**).
5. If you want to change the size of the PIP, select **PIP Size** in the OSD then select either **Enlarge**, **Reduce**, **Set to Maximum Size**, **Set to Minimum Size**, or **Reset to Default Size**. At maximum size, the PIP will display pixel-for-pixel all input formats up to 2048 × 1080. This is to facilitate using the PIP as a confidence monitor. Please refer to the following section for more information on this usage.
6. If you want to adjust the position of the PIP, select **PIP Position** in the OSD, then select either **Top Left**, **Top Right**, **Bottom Left**, **Bottom Right**, or **Fine Tune Position**.

Using PIP as a Confidence Monitor

As the PIP is primarily designed to be used as a confidence monitor – at 100% size for 1080- or 720-line content, including DCI 2K content – many of the Image Adjustments available for the main input are also available for use within the PIP. Refer to [Understanding the Z27x Image Adjustment Options on page 32](#) and [Working with 2K and 4K Digital Cinema Image Formats on page 36](#) for further information on these adjustments.

The following adjustments are available within the PIP. None are enabled by default.

Use Video Levels (16–235)

If monitoring a video signal output from a video capture card such as an AJA Kona or Blackmagic Design Decklink, this option should usually be enabled as video levels are typically used in video post-production workflows.

Overscan Within PIP

Use this option if you wish to see how your video output will be displayed on a consumer television. This is especially useful when ensuring that the margins for lower third graphics are correct and nothing will be cut off on a consumer television.

Digital Cinema Options

If you display a 2048 × 1080 signal as a PIP, you can instruct the monitor to display either the full DCI container or crop the PIP to either the 1.85:1 or 2.39:1 aspect ratio. If cropping to an aspect ratio, the shape of the PIP will change to the chosen aspect ratio. Black bars will not be visible at the edges of the PIP.

Changing the Bezel Button Functions

You can change the top-level front bezel button functions from their default values so that when the buttons are activated you can quickly access commonly used commands.

The following commands can be mapped:

- Color Space Select – displays a list of available color space presets. Use to quickly switch from one color space preset to another. This command is mapped to Function Button One by default.
- Adjust Luminance – allows you to quickly change the monitor luminance. This command is mapped to Function Button Three by default.
- Video Input Select – displays a list of the available video inputs so you can switch to another input, as required. This command is mapped to Function Button Two by default.
- Switch to Next Active Video Input – use this command to quickly switch between all active video inputs. An active input is defined as one that is receiving a signal from a computer or other video source.
- Aspect Ratio Display – displays the Aspect Ratio Display sub-menu, providing quick access to this set of functions.
- Video Levels (16–235) On / Off – allows you to quickly switch between full range and reduced range video inputs. When disabled this command will be displayed as “Video Levels (16–235) On” and when enabled this command will be displayed as “Video Levels (16–235) Off.”
- Overscan On / Off – allows you to quickly enable and disable video overscan. When disabled this command will be displayed as “Overscan On” and when enabled this command will be displayed as “Overscan Off.”

- Blue-Only Mode On / Off – allows you to quickly enable and disable blue-only display. When disabled this command will be displayed as “Blue-Only Mode On” and when enabled this command will be displayed as “Blue-Only Mode Off.”
- Scroll 4K Region – use this option to scroll through a 4K image being displayed Pixel-for-Pixel. Refer to [Show 4K Source Video Pixel-for-Pixel on page 38](#) for more information on this command.
- Next 4K Corner– use this option to hop from location 4K image being displayed Pixel-for-Pixel to another. Refer to [Show 4K Source Video Pixel-for-Pixel on page 38](#) for more information on this command.
- PIP On / Off – allows you to quickly turn the PIP on and off and is designed to facilitate using it as a confidence monitor. When disabled this command will be displayed as “PIP On” and when enabled this command will displayed as “PIP Off.” Refer to [Using PIP as a Confidence Monitor on page 40](#) for more information on this usage.
- Swap Primary / PIP Inputs – use this option to quickly swap the Primary and PIP inputs. Use of this option does not require that the PIP be enabled, just that the PIP input be configured. Therefore this option can be used as another method of quickly switching between two inputs.
- Next PIP Corner – use this option to move the PIP from position to position on the screen. Repeated use of this command will fly the PIP in the following order: Upper Left Corner, Upper Right Corner, Lower Left Corner, Lower Right Corner.
- Show Display information – this command will display useful display information including Display Mode, Active Color Space, Monitor Serial Number, Firmware Revision, and Backlight Hours. This command is mapped to Function Button Four by default.
- Show Color Space Information – this command will display useful information about the current color space including the primary coordinates, white point coordinates, and gamma.
- Test Pattern Generator – this command will display a list of built-in test patterns including black, white, medium gray, red, green, and blue. These patterns, in association with an external measurement device, can be helpful to quickly check the calibration accuracy of the display between calibrations.
- •Empty – this command clears a bezel function key. When selected the label will not be blank.

To change the bezel button functions:

1. Press one of the five front bezel buttons to display the button labels, and then press the bottom **Open Menu** button to open the OSD.
2. In the OSD, select **Menu and Message Control > Configure Function Buttons** and then select one of the available options for the button you want to reconfigure.

Changing the Bezel Function Button Mode

By default when any bezel button is pressed a menu appears to the left of the buttons, indicating the command assigned to each button. When the menu is displayed, you can press the desired button to execute an assigned command. Once you are familiar with the menu configuration you can disable the function button label display and simply press the desired bezel button to execute the desired command. This will only disable the function button label display for the function button commands. Once you have opened the OSD the function labels will display.

To change the bezel function button mode:

1. Press one of the five front bezel buttons to display the button labels and then press the bottom Open Menu button to open the OSD. (If you have already switched this mode press on the bottom bezel function button to open the OSD.)
2. In the OSD, select **Menu and Message Control > Function Button Mode** and select one of the following functions.
 - a. Select **Open Button Label First** to display the button labels when you press a bezel button.
 - b. Select **Execute Command on First Press** to instantly execute the assigned command when you press a bezel button.

Adjusting the Bezel Button LEDs

The bezel button LEDs have an automatic fade-out feature that is active by default. The LEDs will fade after the OSD timeout period. You can change the LED behavior so that they do not fade out and you can also adjust the brightness of the LEDs if the fade-out feature is disabled.

To disable the bezel button fade-out feature:

1. Press one of the five front bezel buttons to activate the buttons, and then press the bottom **Open Menu** button to open the OSD.
2. In the OSD, select **Menu and Message Control > Bezel Button Auto-Fade > Disable (Always On)**.

If the bezel button fade-out feature has been disabled (as described above), you can adjust the brightness of the buttons on the front bezel to different levels of ambient lighting.

To change the bezel button brightness:

1. Press one of the five front bezel buttons to activate the buttons, and then press the bottom **Open Menu** button to open the OSD.
2. In the OSD, select **Menu and Message Control > Bezel Button Brightness** and use the adjustment scale to set the buttons to the desired brightness.

You can also change the color of the button LEDs on the front bezel. You can make the button LEDs white or red, or set them to automatically change from white to red when ambient lighting is reduced. Red should be used when operating the monitor in low-light environments. The white LED color can negatively impact your eye's color sensitivity while red will not.

To change the bezel button color:

1. Press one of the five front bezel buttons to activate the buttons, and then press the bottom **Open Menu** button to open the OSD.
2. In the OSD, select **Menu and Message Control > Bezel Button color** and select either **Always White**, **Always Red**, or **Switch to Red at 70 cd/m²**.

Using Auto-Sleep Mode

The display supports an OSD (On-Screen Display) option called **Auto-Sleep Mode**, that allows you to enable or disable a reduced power state for the display. When Auto-Sleep Mode is enabled (enabled by default), the monitor will enter a reduced power state when the host PC signals low power mode (absence of either horizontal or vertical sync signal).

Upon entering this reduced power state sleep mode, the monitor screen is blanked, the backlight is turned off and the power LED indicator turns amber. The monitor draws less than 0.5W of power when in this reduced power mode. The monitor will wake from the sleep mode when the host PC sends an active signal to the monitor (for example, if you activate the mouse or keyboard).

You can disable the Auto-Sleep Mode in the OSD. Press one of the five front bezel buttons to activate the buttons, and then press the bottom **Open Menu** button to open the OSD. In the OSD press **Management > Auto-Sleep > Disable**.

Using the On-Screen Display Menu

Use the On-Screen Display (OSD) to adjust the screen image based on your viewing preferences. To access the OSD, do the following:

1. Press any of the five buttons on the right side of the front bezel to activate the buttons.
2. Press the bottom **Open Menu** button to open the OSD.
3. Use the top four Function buttons to navigate, select, and adjust the menu choices. The button labels are variable depending on the menu or sub-menu that is active.



NOTE: OSD menu items that are grayed out are not supported with the selected video input and settings.

The tables in the following sections list the On-Screen Display (OSD) menu selections and their functional descriptions.

Color Space Menu

Level 1	Level 2	Level 3	Level 4
Color Space	[Color Space 1 Name]		
	[Color Space 2 Name]		
	[Color Space 3 Name]		
	[Color Space 4 Name]		
	[Color Space 5 Name]		
	[Color Space 6 Name]		
	[Color Space 7 Name]		
	Adjust Luminance	Set Luminance Value	
		Back	
	Color Space Information	[Current Color Space Name]	
		<i>Primaries (u'v' / xy)</i>	
		<ul style="list-style-type: none"> • <i>Red: x.xxx x.xxx</i> • <i>Blue: x.xxx x.xxx</i> • <i>Green: x.xxx x.xxx</i> 	
		<i>White Point (u'v' / xy)</i>	
		<ul style="list-style-type: none"> • <i>x.xxx x.xxx</i> • <i>Name of White Point (ex. D65)</i> 	
		<i>Gamma (x.x or sRGB)</i>	
		Switch coordinate display to xy/u'v' (allows you to switch the information to display as either CIE 1931 xy or CIE 1976 u'v')	
		Back	
	Reset to Last Calibration		
	Reset to Factory Calibration		
	Back		

Video Input Menu

Level 1	Level 2	Level 3	Level 4
Video Input	DisplayPort 1		
	DisplayPort 2		
	HDMI		
	Auto-Switch Source	Enable	
		Disable	
		Back	
	Back		

Image Adjustment Menu

Level 1	Level 2	Level 3	Level 4
Image Adjustment	Aspect Ratio Display	Fill to Source Aspect Ratio (Proportional)	
		Fill to Entire Screen (Non-Proportional)	
		Fill to Screen Width (Proportional)	
		Fill to Screen Height (Non-Proportional)	
		Pixel-for-Pixel	
		Digital Cinema Options	<i>Image Region:</i>
			Show Entire DCI Container
			Crop to DCI 1.85:1 Aspect Ratio
			Crop to DCI 2.39:1 Aspect Ratio
			Shop Cropped Region
			Set Cropped Region Opacity
			<i>For 4K Sources:</i>
			Obey Aspect Ratio Display Option
			Scale and Show Center Extraction
			Scale and Show Left Side of Frame
			Scale and Show Right Side of Frame
			Back
		Back	

Level 1	Level 2	Level 3	Level 4
Image Adjustment (continued)	Use Video Levels (16–235)		
	Overscan Frame by 5%		
	Show Blue Channel Only		
	On-Screen Menu Rotation	Landscape Portrait Back	
	Advanced	Overdrive	<p><i>Overdrive may improve refresh speed and eliminate image smearing, but will cause other features, such as PIP, to be disabled for certain input resolutions.</i></p> <p>Enable Disable Back</p>
		Deinterlacer	<p><i>The deinterlacer should be enabled if you are using an interlaced source (such as 1080i). Disable to check for interlace encoding errors in a progressive source.</i></p> <p>Enable Disable Back</p>
		Cadence Detection	<p><i>The cadence detector will decode film cadences in video rate sources (ex: 2:3 pulldown). Disable to check for cadence errors in the source.</i></p> <p>Enable Disable Back</p>
		Back	
	Back		
	Display Mode Information		

PIP Control Menu

Level 1	Level 2	Level 3	Level 4
PIP Control	PIP On/Off	Picture-in-Picture	
		Picture-beside-Picture	
		Off	
		Back	
	PIP Size	Enlarge	
		Reduce	
		Set to Maximum Size	
		Set to Minimum Size	
		Reset to Default Size	
		Back	
PIP Position	Top Left		
	Top Right		
	Bottom Left		
	Bottom Right		
	Fine Tune Position		
	Back		
PIP Input	DisplayPort 1		
	DisplayPort 2		
	HDMI		
	Swap Primary and PIP Inputs		
	Back		
	<i>Primary / PIP Source Information</i>		
Use Video Levels (16–235)			
Overscan Within PIP			
Digital Cinema Options	<i>Image Region:</i>		
	Show Entire DCI Container		
	Crop to DCI 1.85:1 Aspect Ratio		
	Crop to DCI 2.39:1 Aspect Ratio		
	Show Cropped Region		
Back			
Primary / PIP Source Information			

Language Menu

Level 1	Level 2	Level 3	Level 4
Language	Deutsch		
	Traditional Chinese		
	Simplified Chinese		
	English		
	Español		
	Français		
	Italiano		
	Japanese		
	Nederlands		
	Português		

Management Menu

Level 1	Level 2	Level 3	Level 4	
Management	Auto-Sleep	<i>Do you want the display to go to sleep when there is no active video input?</i>		
		Enable		
		Disable		
		Back		
	Power On Recall		<i>Do you want the display to automatically turn back on after an unexpected power failure?</i>	
		Enable		
		Disable		
		Back		
DDC/CI Communications		<i>Do you want the display to respond to commands issued by the host via DDC/CI?</i>		
		Enable		
		Disable		
		Back		
Auto EDID Update		<i>Do you want the display to automatically update the EDID when you switch color spaces?</i>		
		Enable		
		Disable		
		Back		
Hot Plug Initiate		<i>Do you want the display to initiate a Hot Plug Event when you switch color spaces?</i>		
		Enable		
		Disable		
		Back		

Level 1	Level 2	Level 3	Level 4
Management <i>(continued)</i>	DisplayPort Compatibility	<p><i>Not all displays can sync to a DisplayPort 1.2 connection. Do you want DisplayPort input 1 to identify itself as version 1.1 to connected displays?</i></p> <p>DisplayPort 1.1 Compatibility Mode</p> <p>DisplayPort 1.2</p> <p>Back</p>	
		<hr/> <p>Manage Internal Processor</p> <p><i>Do you want the internal processor to be enabled? The internal processor must be enabled for display calibration, firmware updates, and remote management.</i></p> <p>Enable</p> <p>Disable</p> <p>Back</p>	
		<hr/> <p>Firmware Update Support</p> <p><i>Do you want to allow firmware updates?</i></p> <p>Enable, Via USB or Network</p> <p>Enable, Via USB Only</p> <p>Enable, Via Network Only</p> <p>Disable</p> <p>Back</p>	
		<hr/> <p>Calibration Support</p> <p><i>Do you want to allow display calibration?</i></p> <p>Enable</p> <p>Disable</p> <p>Back</p>	

Level 1	Level 2	Level 3	Level 4
Management (<i>continued</i>)	Remote Management Services	Enable / Disable Server	<p><i>Do you want to enable the internal remote management web server?</i></p> <p>Enable</p> <p>Disable</p> <p>Back</p>
		IP Configuration Mode	<p>DHCP</p> <p>Manual</p> <p>IPv4 Address: xxx.xxx.xxx.xxx</p> <p>IPv4 Subnet Mask: xxx.xxx.xxx.xxx</p> <p>IPv4 Gateway: xxx.xxx.xxx.xxx</p> <p>Back</p>
		WS-Management Setup	<p>Enable WS-Management</p> <p>Enable WS-Identity Support</p> <p>Back</p>
		Install Certificate	
		Reset Administrator Password	
	Back		

Menu and Message Control Menu

Level 1	Level 2	Level 3	Level 4
Menu and Message Control	Menu and Message Position	Use the buttons to adjust the position of the Menu. Press "Back" when you are finished.	
	Menu and Message Opacity	Set Opacity Value	Back
	Menu and Message Timeout	Set Timeout Value	Back
	Enable / Disable Messages	Show Info When Powering Display On	Show Info When Input Source Changes
		Remind Me of the Warmup Time	Notify Me When Recalibration is Due
		Back	

Level 1	Level 2	Level 3	Level 4
Menu and Message Control (continued)	Configure Function Buttons	Configure Function Button 1	Color Space Select
		Configure Function Button 2	Adjust Luminance
		Configure Function Button 3	Video Input Select
		Configure Function Button 4	Switch to Next Active Video Input
			Aspect Ratio Display
			Video Levels (16–235) On / Off
			Overscan On / Off
			Blue-Only Mode On/Off
			Scroll 4K Region
			Next 4K Corner
	Pip On / Off		
	Swap Primary / PIP Inputs		
	Next PIP Corner		
	Show Display Information		
	Show Color Space Information		
	Test Pattern Generator		
	Empty (No Function)		
	Back		
	Function Button Mode	Open Button Label First	
		Execute Command on First Press	
		Back	
	Bezel Button Color	Always White	
		Always Red	
		Auto-Switch to Red at 70 cd/m ²	
		Back	
	Bezel Button Brightness	Set Brightness Value	
		Back	
Menu and Message Control (continued)	Bezel Button Auto-Fade	Enable (Obey Menu Timeout)	
		Disable (Always On)	
		Back	
	Back		

Information and Factory Reset Menus

Level 1	Level 2	Level 3	Level 4
Information	<i>Display Mode: Display Mode</i> <i>Color Space: Color Space</i> <i>Current Video Pipeline Delay: xx ms</i> <i>Serial Number: Serial Number</i> <i>Firmware Revision: Firmware Revision ID</i> <i>Last Calibration: xxxxx Hours</i> <i>Backlight Hours: xxxxx Hours</i> <i>Remote Management Server: Enabled/Disabled</i> <i>IPv4 Address: xxx.xxx.xxx.xxx</i> Back		
	Factory Reset		

Introduction to Color Calibration

The Z27x includes an internal color calibration and color management engine and does not require software to be installed on a host computer in order to be calibrated. The following section discusses the fundamentals of user calibration on the Z27x. A detailed discussion of calibration is covered in the *HP DreamColor Z27x Advanced User Guide*.

The Z27x has been pre-calibrated at the factory to accurately display six of the most-frequently used industry standard color spaces. In addition, all color spaces presets can be recalibrated by the user. The following table lists the out-of-the box calibrated color space presets and provides information on their calibrated configuration.

Preset Name	Red Primary (u'v')	Green Primary (u'v')	Blue Primary (u'v')	White Point	Gamma	Luminance
sRGB	0.451, 0.523	0.125, 0.563	0.175, 0.158	D65	sRGB	250 cd/m ²
AdobeRGB	0.451, 0.523	0.076, 0.576	0.175, 0.158	D65	2.2	250 cd/m ²
BT.709	0.451, 0.523	0.125, 0.563	0.175, 0.158	D65	2.4	100 cd/m ²
BT.601	0.432, 0.525	0.130, 0.562	0.175, 0.158	D65	2.4	100 cd/m ²
BT.2020	0.557, 0.516	0.056, 0.587	0.159, 0.126	D65	2.4	100 cd/m ²
DCI P3	0.496, 0.526	0.099, 0.578	0.175, 0.158	P3	2.6	48 cd/m ²

As a display is used, the backlight ages and the light output changes. As a result, a color-critical display must be recalibrated from time to time to ensure color accuracy. HP recommends that the

Z27x be recalibrated every one thousand hours of use. The number of hours since calibration can be displayed via the Display Information option in the Main Menu of the OSD or via the Show Display Information command.

HP supports a variety of color measurement instruments, from inexpensive solutions that sell for a few hundred dollars to colorimeters and spectroradiometers costing tens of thousands of dollars. The following measurement instruments are supported:

- HP DreamColor Calibration Solution (X-Rite i1 powered colorimeter)
- Klein K10-A colorimeter
- Photo Research PR-655 SpectraScan spectroradiometer
- Photo Research PR-670 SpectraScan spectroradiometer
- Photo Research PR-680/PR-680L SpectraDuo spectroradiometer
- Photo Research PR-730/735 SpectraScan spectroradiometer
- Photo Research PR-740/745 SpectraScan spectroradiometer
- Konica Minolta CA-210 Display Color Analyzer colorimeter

The HP DreamColor Calibration solution is available directly from HP.com and HP resellers. Contact the manufacturers of the other supported instruments for pricing and availability.



NOTE: As the connection to the Z27x is made via USB, the Photo Research and Konica Minolta units must have USB connection, which is optional on some models.

Two different calibration workflows are supported:

- Onscreen menu-driven calibration
- HP StudioCal XML-driven calibration

This user guide only covers the onscreen menu-driven calibration option. Please refer to the HP DreamColor Z27x Advanced User Guide for information on the XML-driven option.

Preparing to Calibrate

In order to calibrate, the Z27x internal processor must be enabled. To meet the energy savings requirements of Energy Star 6.0, the internal processor is disabled at the factory.

To enable the Z27x internal processor:

1. Press one of the five front bezel buttons to display the button labels and then press the bottom Open Menu button to open the OSD.
2. In the OSD, select **Management > Manage Internal Processor**.
3. Choose **Enable** then press **Select** to turn the processor on.
4. Press **Exit** to exit the OSD.

Once enabled, wait approximately one minute for the processor to fully boot before beginning calibration.



CAUTION: It is strongly recommended that calibration be performed in a darkened room. Stray light bouncing off the monitor will negatively impact calibration accuracy.

Calibrating the Z27x Using the Onscreen Menus


Once the internal processor has booted, connect the measurement instrument to one of the DreamColor USB ports on the bottom of the Z27x.



After 15–60 seconds, depending on the measurement instrument, the Z27x will display a message asking you how you wish to calibrate the monitor.

Recalibrate the Current Preset

This option will recalibrate the active color space using its current configuration. This is the recommended procedure for recalibrating a color space that is configured the way you need it to be. After choosing this option the display will show an instrument alignment target. Align your instrument with the center of the crosshairs then press the **Start Calibration** bezel button.

 **NOTE:** If using the HP DreamColor Calibration Solution, be sure to rotate the ambient light filter out of the way before using the instrument. For other instruments be sure to remove the lens cap prior to calibration.

Depending on the instrument used, calibration may take between a few minutes and half an hour. The screen will display a variety of colors during the calibration process then display a calibration complete message at the end of calibration.

Select and Modify a Preset

This option allows you to choose the color space to calibrate and change the gamut, white point, gamma, and luminance targets. This is the recommended procedure if you want to modify a color space preset from its factory configuration

When this option is selected you will be presented with a series of screens from which you can choose the desired calibration targets. Each screen allows you to select from a set of standard options, as documented below. If you wish to create a custom set of calibration targets use the StudioCal XML option, documented in the Z27x Advanced User Guide.

The following standard options are provided for you to select from:

- Color Gamut
 - sRGB / BT.709 – the standard color gamut for general computing and high definition (HD) video
 - AdobeRGB – this gamut is often used by professional photographers and has an extended green gamut, as compared to sRGB
 - BT.601 – the standard color gamut for NTSC and PAL standard definition (SD) video
 - BT.2020 – the aspirational color gamut for Ultra High Definition (UHD or 4K) consumer television
 - DCI P3 – the standard color gamut for Digital Cinema projection
- White Point
 - D65 – the standard white point for general use including graphic arts, photography, and SD, HD, and UHD television production/post-production; also used in some digital cinema workflows
 - D50 – the standard white point for the traditional printing and pre-press industry
 - D55 – the standard white point for traditional film work
 - DCI-P3 – the standard white point for DCI-based digital cinema workflows
- Gamma
 - 2.2 – the standard gamma for general applications
 - 2.4 – the standard gamma for video applications in partially darkened rooms
 - 2.6 – the standard gamma for digital cinema applications in totally darkened rooms
 - 1.8 – the classic gamma used on previous-generation Mac systems
- Luminance
 - 250 cd/m² (candelas per square meter) – appropriate for use in very bright environments
 - 150 cd/m² – appropriate for use in typical office and home illumination
 - 120 cd/m² – appropriate for the dim lighting used in a video post-production suite
 - 80 cd/m² – also appropriate for the dim lighting used in a video post-production suite
 - 48 cd/m² – appropriate for the darkened environment used in film post-production and dailies screening



NOTE: Further information on these standard values is provided in the Z27x Advanced User Guide.

Once all of the options are selected the display will show a calibration target. Align your instrument with the center of the crosshairs then press the **Start Calibration** bezel button.

Depending on the instrument used, calibration may take between a few minutes and half an hour. The screen will display a variety of colors during the calibration process then display a calibration complete message at the end of calibration.

Auto EDID Update


By default, the display automatically updates the display EDID when you switch color spaces.

If Auto EDID Update is enabled, the EDID will be updated for all inputs every time you change the active color space preset. If Auto EDID Update is disabled, each input will be set to the factory default values for the Native color space.

You can enable or disable Auto EDID Update in the OSD:

1. Press any of the five front bezel buttons on the right side of the front bezel to activate the buttons.
2. Press the bottom **Open Menu** button to open the OSD.
3. In the OSD, select **Management > Auto EDID Update** and then select either **Enable** or **Disable**.

A Technical Specifications

 **NOTE:** All specifications represent the typical specifications provided by HP's component manufacturers; actual performance may vary either higher or lower.

Z27x Model

Display	68.58 cm, widescreen	27 inches, widescreen
Type	TFT LCD	
Viewable Image Size	68.58 cm diagonal	27-inch diagonal
Maximum Weight (Unpacked)	8.8 kg	19.4 lbs
Dimensions (include base)		
Height (highest position)	53.60 cm	21.10 inches
Height (lowest position)	44.29 cm	17.44 inches
Depth	24.10 cm	9.49 inches
Width	64.75 cm	25.49 inches
Maximum Graphic Resolution	2560 × 1440 (60 Hz) digital input	
Optimum Graphic Resolution	2560 × 1440 (60 Hz) digital input	
Environmental Requirements Temperature		
Operating Temperature	5 to 35° C	41 to 95° F
Storage Temperature	-20 to 60° C	-4 to 140° F
Power Source	100 — 240 VAC 50/60 Hz	
Input Terminal	Two DisplayPort connectors; one HDMI connector (one DisplayPort cable and one HDMI cable included)	

NOTE: For the latest specifications or additional specifications on this product, go to <http://www.hp.com/go/productbulletin> and search for your specific display model to find the model-specific QuickSpecs.

Recognizing Preset Display Resolutions

The display resolutions listed below are the most commonly used modes and are set as factory defaults. This monitor automatically recognizes these preset modes and they will appear properly sized and centered on the screen.

Z27x Model

Preset	Pixel Format	Aspect Ratio	Vert Freq (Hz)	Pixel Clk (MHz)
1	640 × 480	4:3	60(p)	25.175
2	720 × 480	4:3	60(i)	27.000
3	720 × 480	4:3	60(p)	27.000
4	720 × 480	16:9	60(i)	27.000
5	720 × 480	16:9	60(p)	27.000
6	720 × 576	4:3	50(i)	27.000
7	720 × 576	4:3	50(p)	27.000
8	720 × 576	16:9	50(i)	27.000
9	720 × 576	16:9	50(p)	27.000
10	800 × 600	4:3	60.317	40.000
11	1024 × 768	4:3	60.004	65.000
12	1280 × 720	16:9	24(p)	59.400
13	1280 × 720	16:9	30(p)	74.250
14	1280 × 720	16:9	50(p)	74.250
15	1280 × 720	16:9	60(p)	74.250
16	1280 × 1024	5:4	60.020	108.000
17	1366 × 768	16:9	60.000	72.000
18	1600 × 1200	4:3	60.000	162.000
19	1920 × 1080	16:9	24(p)	74.250
20	1920 × 1080	16:9	30(p)	74.250
21	1920 × 1080	16:9	50(i)	74.250
22	1920 × 1080	16:9	50(p)	148.500
23	1920 × 1080	16:9	60(i)	74.250
24	1920 × 1080	16:9	60(p)	148.500
25	1920 × 1200	16:10	59.950	154.000
26	1920 × 1200	16:10	59.995	193.250
27	2048 × 1080	1.89:1 1.85:1 2.39:1	24(p)	58.2382

Preset	Pixel Format	Aspect Ratio	Vert Freq (Hz)	Pixel Clk (MHz)
28	2048 × 1080	1.89:1	48(p)	117.1123
		1.85:1		
		2.39:1		
29	2048 × 1080	1.89:1	60(p)	147.1853
		1.85:1		
		2.39:1		
30	2560 × 1440	16:9	48(p)	192.3149
31	2560 × 1440	16:9	50(p)	200.4640
32	2560 × 1440	16:9	60(p)	252.000
33	2560 × 1600	16:10	59.97	268.500
34	3840 × 2160	16:9	24(p)	209.7600
35	3840 × 2160	16:9	25(p)	218.6000
36	3840 × 2160	16:9	30(p)	262.9200
37	4096 × 2160	1.89:1	24(p)	223.1846
		1.85:1		
		2.39:1		

NOTE: Interlaced modes are indicated by (i); progressive scan modes are indicated by (p). If no indication is given, the mode is progressive scan.

NOTE: The 2048 × 1080 and 4096 × 2160 modes represent the two standard “envelopes” described by the Digital Cinema Initiative (DCI) specification. They have a native aspect ratio of approximately 1.896:1 (256/135), but also support 1.85:1 and 2.39:1 aspect ratios. For more information, refer to [Using the Digital Cinema Display Options on page 37](#).

NOTE: To use presets 34 through 37 listed above, the presets must be supported by the graphics card. You also may only be able to use DisplayPort 1 and DisplayPort 1 must be set to DisplayPort 1.2 mode in the OSD (**Management > DisplayPort Compatibility > DisplayPort 1.2**).

B Support and Troubleshooting

Solving Common Problems

The following table lists possible problems, the possible cause of each problem, and the recommended solutions.

Problem	Possible Cause	Solution
Screen is blank or video is flashing.	Power cord is disconnected.	Connect the power cord.
	Power button on front panel of the monitor is turned off.	Press the front panel power button. NOTE: If pressing the power button has no effect, press and hold the power button for 10 seconds to disable the power button lockout feature.
	Video cable is improperly connected.	Connect the video cable properly. Refer to Setting Up the Monitor on page 5 for more information.
	System is in sleep mode.	Press any key on the keyboard or move the mouse to inactivate the screen blanking utility.
Monitor will not turn on.	Video card compatibility.	Open the OSD menu and select the Video Input menu. Set Input Auto-Switch Source to Disable and manually select the input.
	Master power switch on rear panel of the monitor is turned Off.	Turn the master power switch to On.
	Image appears blurred, indistinct, or too dark.	Brightness is too low. Open the OSD menu and select Color Space > Adjust Luminance to adjust the luminance scale as needed.
	Check Video Cable is displayed on screen.	Monitor video cable is disconnected. Connect the appropriate video signal cable between the computer and monitor. Be sure that the computer power is off while connecting the video cable.
Input Signal Out of Range is displayed on screen.	Video resolution and/or refresh rate are set higher than what the monitor supports. Change the settings to a supported setting (see Recognizing Preset Display Resolutions on page 61).	
The monitor is off but it did not seem to enter into a low-power sleep mode.	The monitor's power saving control is disabled. Open the OSD menu and select Management > Auto-Sleep and set auto-sleep to Enable .	
OSD Lockout is displayed.	The monitor's OSD Lockout function is enabled. Press and hold the bottom Menu button for 10 seconds to disable the OSD Lockout function.	
Power Button Lockout is displayed.	The monitor's Power Button Lockout function is enabled. Press and hold the power button for 10 seconds to unlock the power button function.	
Bezel button LEDs are not on.	By default, the Bezel button LEDs are set to fade out when not in use. To set the bezel button LEDs so that they are always on, open the OSD menu and select Menu and Message Control > Bezel Button Auto-Fade > Disable (Always On) .	
Bezel button LEDs are always on but are too bright or too dim.	Bezel button auto-fade has been turned off in the OSD and the brightness needs adjustment. Open the OSD menu and select Menu and Message Control > Bezel Button Brightness and adjust the brightness value.	

Problem	Possible Cause	Solution
Displayed colors do not look correct.	Monitor is not calibrated.	Recalibrate monitor or restore factory calibration.
Calibration failed.	Incorrect setup or equipment failure.	Redo calibration.

Button Lockouts

When the Primary OSD or button labels are not displayed, holding specific buttons down for ten seconds will lock out different parts of the OSD's functionality. You can restore the functionality by holding the specific buttons down again for ten seconds. This functionality is only available when the display is powered and is displaying an active signal.

The following table lists the available lockouts and the buttons that must be held down for ten seconds to enable and disable the lockout.

Activation Button	Lockout	Notes
Power button	Power lockout	When locked out, the power button does not function. The display can still be turned off via the power switch at the bottom of the display.
Bottom menu button	Menu lockout	The Primary OSD cannot be entered. However, any assigned function buttons (such as switch color space or input) are still available. Firmware updates and calibration are still available, unless disabled in the Management menu.
Top menu button	Menu and Function lockout	Both the Primary OSD and the function keys are locked out. Firmware updates and calibration are still available, unless disabled in the Management menu.
Second and fourth button	Management menu lockout	The Management menu option is disabled in the Primary OSD main menu.

Product Support

For additional information on using your all-in-one, go to <http://www.hp.com/support>. Select your country or region, select **Troubleshooting**, and then enter your model in the search window and click the **Go** button.



NOTE: The monitor user guide, reference material, and drivers are available at <http://www.hp.com/support>.

If the information provided in the guide does not address your questions, you can contact support. For U.S. support, go to <http://www.hp.com/go/contactHP>. For worldwide support, go to http://welcome.hp.com/country/us/en/wwcontact_us.html.

Here you can:

- Chat online with an HP technician



NOTE: When support chat is not available in a particular language, it is available in English.

- Find support telephone numbers
- Locate an HP service center

Preparing to Call Technical Support

If you cannot solve a problem using the troubleshooting tips in this section, you may need to call technical support. Have the following information available when you call:

- Monitor model number
- Monitor serial number
- Purchase date on invoice
- Conditions under which the problem occurred
- Error messages received
- Hardware configuration
- Name and version of the hardware and software you are using

C Agency Regulatory Notices

Federal Communications Commission Notice

This equipment has been tested and found to comply with the limits for a Class B digital device, pursuant to Part 15 of the FCC Rules. These limits are designed to provide reasonable protection against harmful interference in a residential installation. This equipment generates, uses, and can radiate radio frequency energy and, if not installed and used in accordance with the instructions, may cause harmful interference to radio communications. However, there is no guarantee that interference will not occur in a particular installation. If this equipment does cause harmful interference to radio or television reception, which can be determined by turning the equipment off and on, the user is encouraged to try to correct the interference by one or more of the following measures:

- Reorient or relocate the receiving antenna.
- Increase the separation between the equipment and the receiver.
- Connect the equipment into an outlet on a circuit different from that to which the receiver is connected.
- Consult the dealer or an experienced radio or television technician for help.

Modifications

The FCC requires the user to be notified that any changes or modifications made to this device that are not expressly approved by Hewlett Packard Company may void the user's authority to operate the equipment.

Cables

Connections to this device must be made with shielded cables with metallic RFI/EMI connector hoods to maintain compliance with FCC Rules and Regulations.

Declaration of Conformity for Products Marked with the FCC Logo (United States Only)

This device complies with Part 15 of the FCC Rules. Operation is subject to the following two conditions:

1. This device may not cause harmful interference.
2. This device must accept any interference received, including interference that may cause undesired operation.

For questions regarding the product, contact:

Hewlett Packard Company

P. O. Box 692000, Mail Stop 530113

Houston, Texas 77269-2000

Or, call 1-800-HP-INVENT (1-800 474-6836)

For questions regarding this FCC declaration, contact:

Hewlett Packard Company

P. O. Box 692000, Mail Stop 510101

Houston, Texas 77269-2000

Or, call (281) 514-3333

To identify this product, refer to the Part, Series, or Model number found on the product.

Canadian Notice

This Class B digital apparatus meets all requirements of the Canadian Interference-Causing Equipment Regulations. CAN ICES-3(B)/NMB-3(B)

Avis Canadien

Cet appareil numérique de la classe B respecte toutes les exigences du Règlement sur le matériel brouilleur du Canada.

European Union Regulatory Notice

Products bearing the CE marking comply with one or more of the following EU Directives as may be applicable:



- Low Voltage Directive 2006/95/EC; EMC Directive 2004/108/EC; Ecodesign Directive 2009/125/EC; R&TTE Directive 1999/5/EC; RoHS Directive 2011/65/EU
- Compliance with these directives is assessed using applicable European Harmonised Standards.
- The full Declaration of Conformity can be found at the following web site: <http://www.hp.eu/certificates>.
- (Search with the product model name or its Regulatory Model Number (RMN), which may be found on the regulatory label.)

The point of contact for regulatory matters is Hewlett-Packard GmbH, Dept./MS:HQ-TRE, Herrenberger Strasse 140, 71034 Boeblingen, GERMANY.

German Ergonomics Notice

HP products which bear the “GS” approval mark, when forming part of a system comprising HP brand computers, keyboards and monitors that bear the “GS” approval mark, meet the applicable ergonomic requirements. The installation guides included with the products provide configuration information.

Japanese Notice

この装置は、クラスB情報技術装置です。この装置は、家庭環境で使用することを目的としていますが、この装置がラジオやテレビジョン受信機に近接して使用されると、受信障害を引き起こすことがあります。取扱説明書に従って正しい取り扱いをして下さい。

VCCI-B

Korean Notice

B급 기기
(가정용 방송통신기기)

이 기기는 가정용(B급)으로 전자파적합등록을 한 기기로서 주로 가정에서 사용하는 것을 목적으로 하며, 모든 지역에서 사용할 수 있습니다.

Power Cord Set Requirements

The monitor power supply is provided with Automatic Line Switching (ALS). This feature allows the monitor to operate on input voltages between 100–120V or 200–240V.

The power cord set (flexible cord or wall plug) received with the monitor meets the requirements for use in the country where you purchased the equipment.

If you need to obtain a power cord for a different country, you should purchase a power cord that is approved for use in that country.

The power cord must be rated for the product and for the voltage and current marked on the product's electrical ratings label. The voltage and current rating of the cord should be greater than the voltage and current rating marked on the product. In addition, the cross-sectional area of the wire must be a minimum of 0.75 mm² or 18 AWG, and the length of the cord must be between 6 feet (1.8 m) and 12 feet (3.6 m). If you have questions about the type of power cord to use, contact an authorized HP service provider.

A power cord should be routed so that it is not likely to be walked on or pinched by items placed upon it or against it. Particular attention should be paid to the plug, electrical outlet, and the point where the cord exits from the product.

Japanese Power Cord Requirements

For use in Japan, use only the power cord received with this product.

⚠ CAUTION: Do not use the power cord received with this product on any other products.

Product Environmental Notices

ENERGY STAR® Qualification

As an ENERGY STAR® Partner, Hewlett Packard Company has followed the EPA's enhanced product qualification and certification process to ensure that the products marked with the ENERGY STAR® logo are ENERGY STAR® qualified per the applicable ENERGY STAR® guidelines for energy efficiency.

The following ENERGY STAR® certification mark appears on all ENERGY STAR® qualified displays:



The ENERGY STAR® program specifications for displays and computers were created by the EPA to promote energy efficiency and reduce air pollution through more energy-efficient equipment in homes, offices, and factories. One way products achieve this goal is by using the Microsoft Windows power management feature to reduce power consumption when the product is not in use.

The power management feature enables the computer to initiate a low-power or “sleep” mode after a period of user inactivity. When used with an external ENERGY STAR® qualified display, this feature also supports similar power management features for the display. To take advantage of these potential energy savings, users should use the default power management settings that are provided with ENERGY STAR qualified computers and displays. The default power management settings on ENERGY STAR® qualified computers are preset to behave in the following ways when the system is operating on AC power:

- Turn off an external display after 15 minutes of user inactivity
- Initiate a low power sleep mode for the computer after 30 minutes of user inactivity

ENERGY STAR® qualified computers exit the low power sleep mode and ENERGY STAR® qualified displays resume operation when the user resumes use of the computer. Examples include the user pressing the power/sleep button, receiving an input signal from an input device, receiving an input signal from a network connection with the Wake On LAN (WOL) feature enabled, etc.

Additional information on the ENERGY STAR® program, its environmental benefits and the potential energy and financial savings of the power management feature can be found on the EPA ENERGY STAR® Power Management Web site at <http://www.energystar.gov/powermanagement>.

Materials Disposal

Some HP LCD monitors contain mercury in the fluorescent lamps that might require special handling at end-of-life.

Disposal of this material can be regulated because of environmental considerations. For disposal or recycling information, contact the local authorities or the Electronic Industries Alliance (EIA) <http://www.eiae.org>.

Disposal of Waste Equipment by Users in Private Household in the European Union



This symbol on the product or on its packaging indicates that this product must not be disposed of with your household waste. Instead, it is your responsibility to dispose of your waste equipment by handing it over to a designated collection point for the recycling or waste electrical and electronic equipment. The separate collection and recycling of your waste equipment at the time of disposal will help to conserve natural resources and ensure that it is recycled in a manner that protects human

health and the environment. For more information about where you can drop off your waste equipment for recycling, please contact the local city office, the household waste disposal service or the shop where you purchased the product.

HP Recycling Program

HP encourages customers to recycle used electronic hardware, HP original print cartridges, and rechargeable batteries. For more information about recycling programs, go to <http://www.hp.com/recycle>.

Chemical Substances

HP is committed to providing our customers with information about the chemical substances in our products as needed to comply with legal requirements such as REACH (Regulation EC No 1907/2006 of the European Parliament and Council). A chemical information report for this product can be found at <http://www.hp.com/go/reach>.

Restriction of Hazardous Substances (RoHS)

A Japanese regulatory requirement, defined by specification JIS C 0950, 2005, mandates that manufacturers provide Material Content Declarations for certain categories of electronic products offered for sale after July 1, 2006. To view the JIS C 0950 material declaration for this product, visit <http://www.hp.com/go/jisc0950>.

2008年、日本における製品含有表示方法、JISC0950が公示されました。製造事業者は、2006年7月1日以降に販売される電気・電子機器の特定化学物質の含有につきまして情報提供を義務付けられました。製品の部材表示につきましては、www.hp.com/go/jisc0950を参照してください。

有毒有害物质/元素的名称及含量表

根据中国
《电子信息产品污染控制管理办法》

液晶显示器

部件名称	有毒有害物质和元素					
	铅 (Pb)	汞 (Hg)	镉 (Cd)	六价铬 (Cr(VI))	多溴联苯 (PBB)	多溴二苯醚 (PBDE)
液晶显示器显示面板	X	X	○	○	○	○
机箱/其它	X	○	○	○	○	○

CRT 显示器

部件名称	有毒有害物质和元素					
	铅 (Pb)	汞 (Hg)	镉 (Cd)	六价铬 (Cr(VI))	多溴联苯 (PBB)	多溴二苯醚 (PBDE)
阴极射线管	X	○	○	○	○	○
机箱/其它	X	○	○	○	○	○

O: 表示该有毒或有害物质在该部件所有均质材料中的含量均在 SJ/T11363-2006 标准规定的限量要求以下。

X: 表示该有毒或有害物质至少在该部件所用的某一均质材料中的含量超出 SJ/T11363-2006 标准规定的限量要求。

表中标有“X”的所有部件都符合欧盟 RoHS 法规 — “欧洲议会和欧盟理事会 2003 年 1 月 27 日关于电子电器设备中限制使用某些有害物质的 2002/95/EC 号指令”。

注: 环保使用期限的参考标识取决于产品正常工作的温度和湿度等条件。

Turkey EEE Regulation

In Conformity with the EEE Regulation

EEE Yönetmeliğine Uygundur

Ukraine Restriction of Hazardous Substances

The equipment complies with requirements of the Technical Regulation, approved by the Resolution of Cabinet of Ministry of Ukraine as of December 3, 2008 No. 1057, in terms of restrictions for the use of certain dangerous substances in electrical and electronic equipment.

D LCD Monitor Quality and Pixel Policy

The TFT monitor uses high-precision technology, manufactured according to HP standards, to guarantee trouble-free performance. Nevertheless, the display may have cosmetic imperfections that appear as small bright or dark spots. This is common to all LCD displays used in products supplied by all vendors and is not specific to the HP LCD. These imperfections are caused by one or more defective pixels or sub-pixels.

- A pixel consists of one red, one green, and one blue sub-pixel.
- A defective whole pixel is always turned on (a bright spot on a dark background), or it is always off (a dark spot on a bright background). The first is the more visible of the two.
- A defective sub-pixel (dot defect) is less visible than a defective whole pixel and is small and only visible on a specific background.

To locate defective pixels, the monitor should be viewed under normal operating conditions, in normal operating mode at a supported resolution and refresh rate, from a distance of approximately 50 cm (20 in).

HP expects that, over time, the industry will continue to improve its ability to produce LCDs with fewer cosmetic imperfections and HP will adjust guidelines as improvements are made.