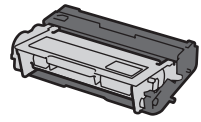
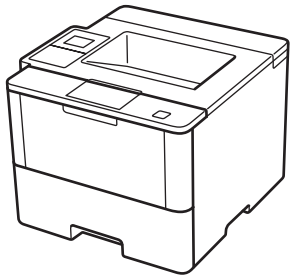
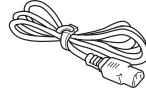


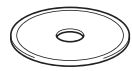
## Unpack the machine and check the components



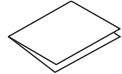
**Imaging Unit and Toner Cartridge Assembly**  
(pre-installed)



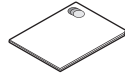
**Connection cords**



**CD-ROMs**



**Installation**



**Safety Information**

**NOTE:**

- The included components vary depending on the country or region.
- You must purchase the correct interface cable for the interface you want to use.

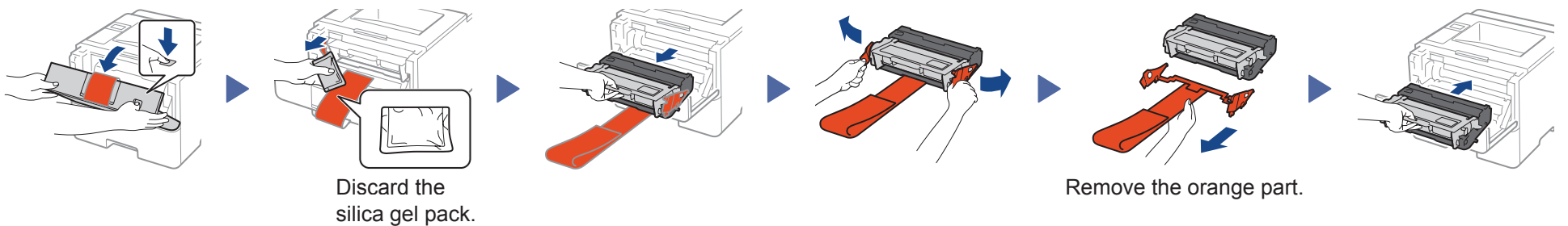
**USB cable**

We recommend using a USB 2.0 cable (Type A/B) that is no more than 6 feet (2 meters) long.

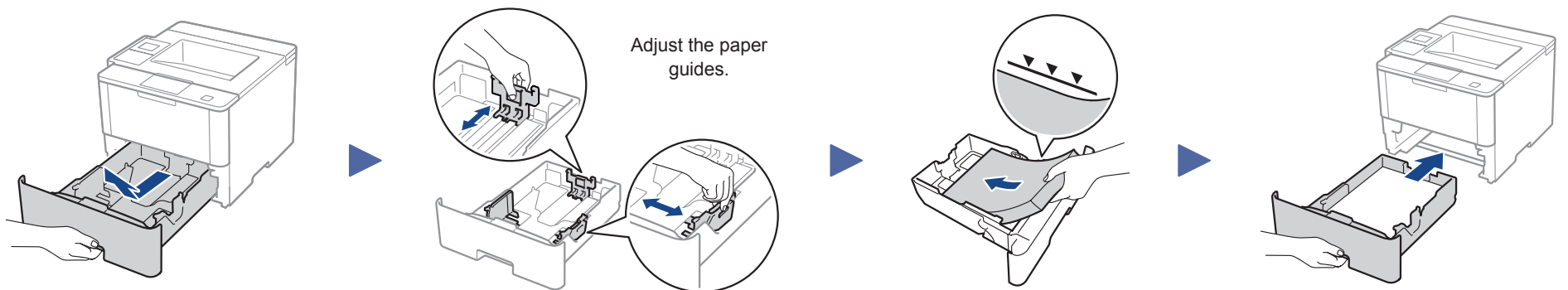
**Network cable**

Use a straight-through Category 5 (or greater) twisted-pair cable.

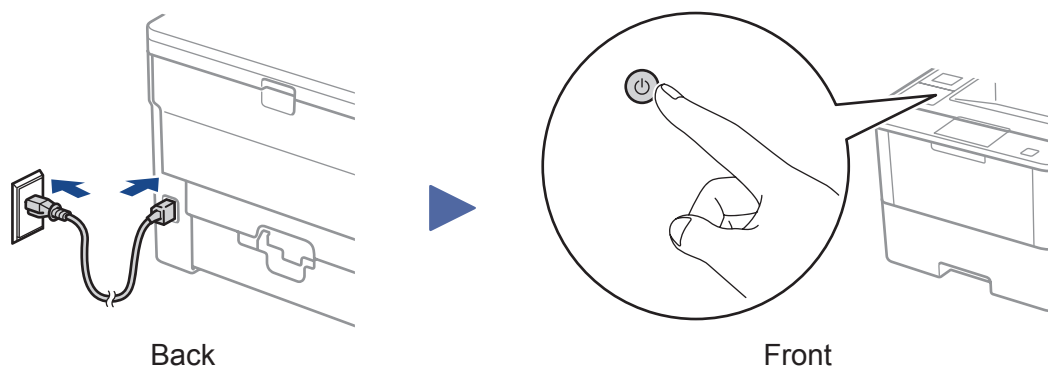
### 1 Remove the packing materials and install the imaging unit and toner cartridge assembly



### 2 Load paper in the paper tray



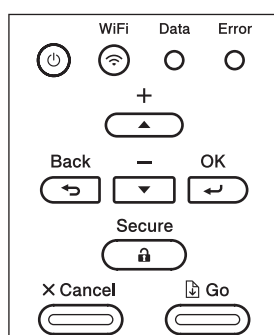
### 3 Connect the power cord and turn on the machine



### 4 Select your language (if needed)

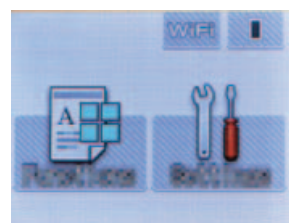
■ For LCD model

1. Press ▼ or ▲ to select [General Setup], and then press **OK**.
2. Press **OK** to select [Local Language].
3. Press ▼ or ▲ to select your language, and then press **OK**.
4. Press **Cancel**.



■ For Touchscreen model

1. On the machine's Touchscreen, press [Settings] > [General Setup] > [Local Language].
2. Press your language.
3. Press



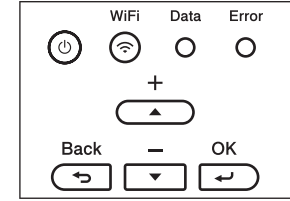
# WiFi Alternate wireless configuration method (Setup Wizard)

If you are not using a wireless network connection, go to step 5. Restart your wireless access point/router.

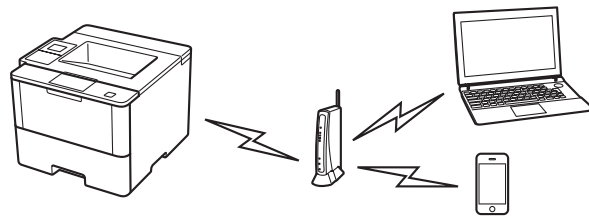
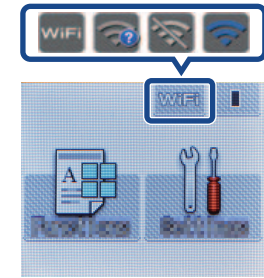


If you cannot find this information, ask your network administrator or wireless access point/router manufacturer.

- For LCD model
  - a. Press ▲ or ▼ to select the [Network] option, and then press **OK**.
  - b. Press ▲ or ▼ to select the [WLAN] option, and then press **OK**.
  - c. Press ▲ or ▼ to select the [Setup Wizard] option, and then press **OK**.
  - d. When [WLAN Enable?] appears, press ▲ to select [On].



- For Touchscreen model
- Press **WiFi** > [Setup Wizard] > [Yes].



Select the SSID.  
Enter the Network key.

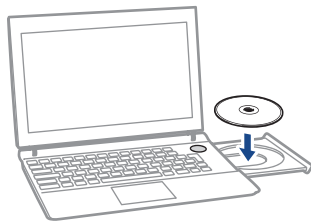
The LCD displays  
[Connected.].

**Finish**

**NOTE:**  
For information on how to enter text, see the *Quick Guide*.

## 5 Installing the printer driver

- For Windows users

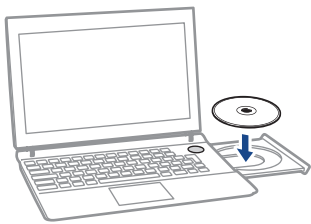


Put the Drivers CD into your CD drive.

Follow the on-screen instructions to continue installation.

**Finish**

- For Macintosh users



Put the Drivers CD into your CD drive.

Open the folder on the CD-ROM that contains the desired printer driver.  
→ Select the folder according to the printer driver, operating system, and language to be used.  
→ Navigate to : **Driver** > **MacOSX** > **OS\_10\_10\_x**

Copy the driver file onto the desktop.  
→ The driver folder varies depending on the required size. Select the file according to your environment.  
To mainly use the metric-based paper size such as A4 size :  
Japanese : "JP\_A4" folder.  
Other than Japanese : "WW\_A4" folder.  
To mainly use the inch-based paper size such as 8 1/2 x 11: "WW\_Letter" folder.

Double-click the file copied onto the desktop.  
The printer driver installer starts.

Click **Continue**, following the instructions on the pages that follow until the **Install page** appears.

Click **Install**.  
→ When the name and password prompt appears during the procedure, enter the Administrator name and password.

**Finish**

## ? Cannot set up your machine?

